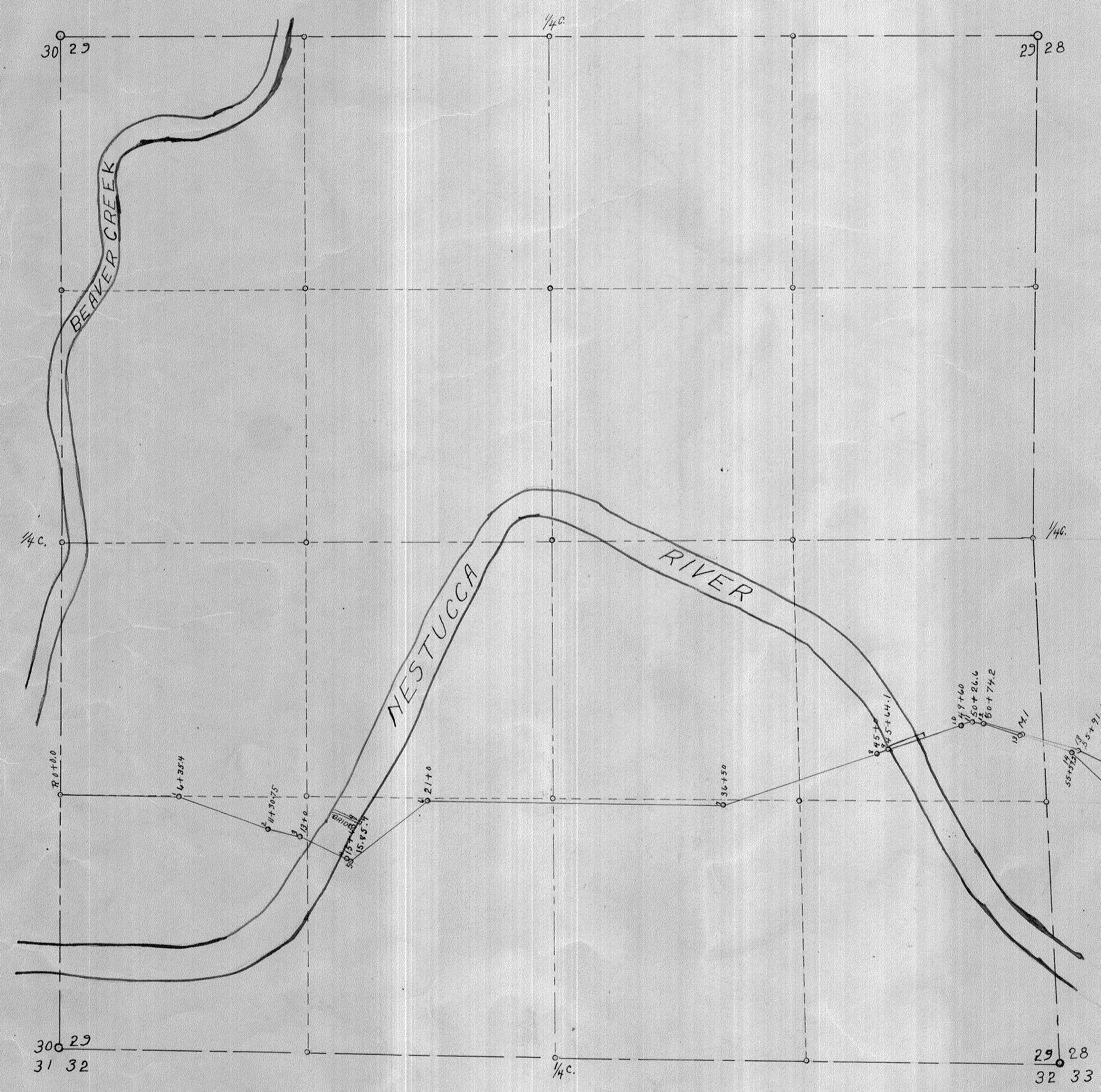
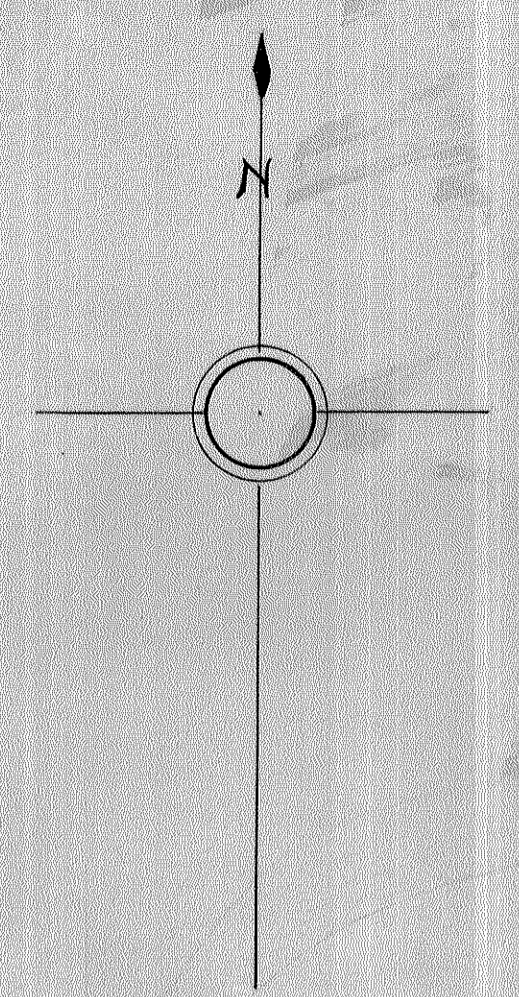


Sta.	Course	Angle	Sta.	Course	Angle	Sta.	Course	Angle
0+0.0	S 88° 51' E	R	50+26.6	S 83° 12' E	11	90+73	N 17° 53' E	28
4+35.4	S 70° 11' E	1	50+74.2	S 72° 35' E	12	92+76.2	N 49° 4' E	23
11+30.75	S 77° 3' E	2	Mile 1	S 72° 35' E	13	93+54	N 49° 4' E	24
13+0	S 63° 35' E	3	55+57.2	S 47° 29' E	14	94+54.3	N 73° 25' E	25
15+63.9	S 63° 35' E	4	63+50	S 55° 43' E	15	120+14	N 73° 25' E	24
15+85.4	N 51° 44' E	5	64+77.2	S 60° 10' E	16	121+46.2	S 58° 38' E	27
21+0	S 89° 12' E	6	69+86.1	N 89° 37' E	17	124+41.5	S 51° 45' E	28
36+50	N 71° 14' E	7	71+57.1	N 56° 26' E	18	129+95	S 58° 22' E	29
45+0	N 71° 14' E	8	76+35.9	N 48° 31' E	19	133+25	N 87° 15' E	30
45+64.1	N 71° 14' E	9	77+32.8	N 35° 22' E	20	133+61	N 39° 1' E	31
49+60	N 76° 3' E	10	79+81.4	N 12° 35' W	21	135+42	R.T.	

Survey of Change

50+74.2	S 74° 21' E	12	58+88.4	S 37° 3' E	14	64+09.3	S 49° 28' E	15
52+80	Do	M.1	63+28.9	S 39° 52' E	14x	65+32.6		16
55+91.5	S 65° 9' E	13						



VACATED 12-11-03
 ORDER 03-94
 INST # 2003-428678
 RECORDED 11-24-2003
 VACATION OF
 PART OF ROAD
 PETITION # 209
 AEP, C.S.
 11-24-03

MAP
 OF
 A.O.FOLAND COUNTY ROAD
 Secs. 27, 28 and 29, TR. 35, R. 10, W. 11 M.
 TILLAMOOK CO. OREGON
 U.G. Jackson, Co. Surveyor May 1911
 SCALE: 1"=400' 60' by 100' by 100' ← PAED '69

Notes in Book CT-5, Page 65 etc.
 "R/W 40' WIDE" see Road BIN #209, SURVEYORS REPORT
 AED 11/3/69