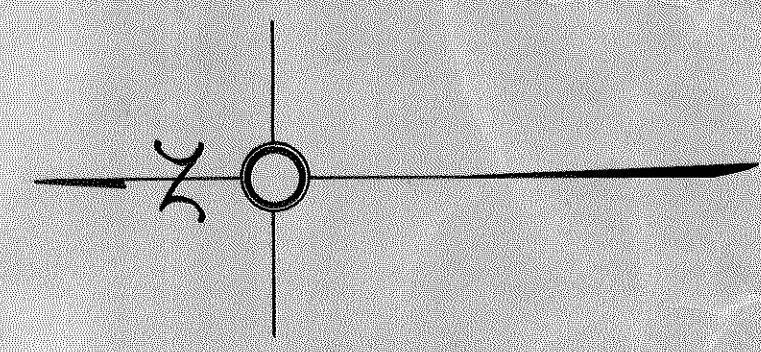
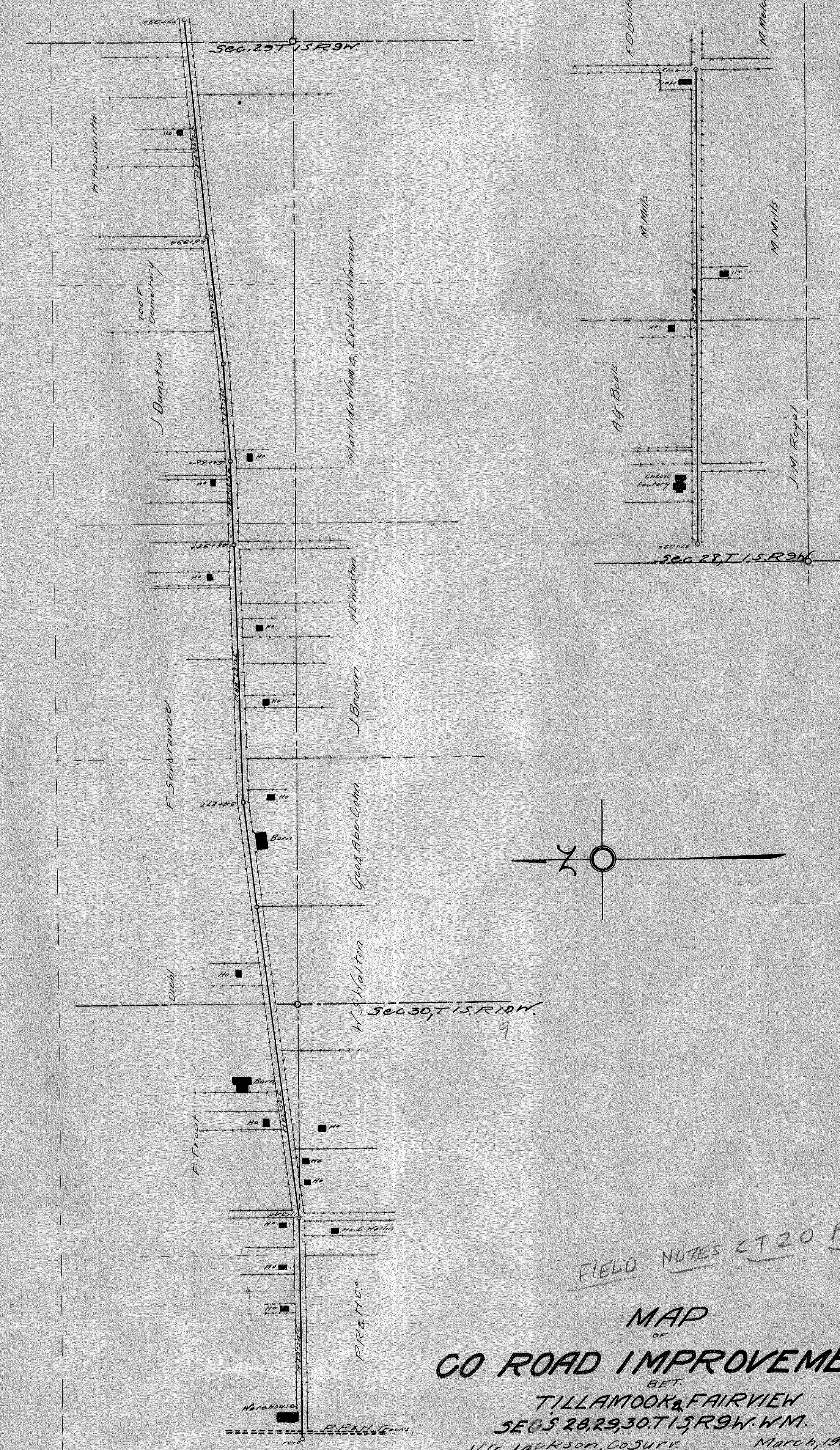


MAP
OF
CO ROAD IMPROVEMENT
ON
TILLAMOOK TO BAYCITY ROAD
SEC'S 24 T 15 R 10 W, 19 T 15 R 9 W
U.G. Jackson, Co SURV. March, 1914.
SCALE 1"=400'



FIELD NOTES CT 20 PAGES
MAP
OF
CO ROAD IMPROVEMENT
BET.
TILLAMOOK & FAIRVIEW
SEC'S 28, 29, 30 T 15 R 9 W W.M.
U.G. Jackson, Co SURV. March, 1915.
SCALE 1"=400'