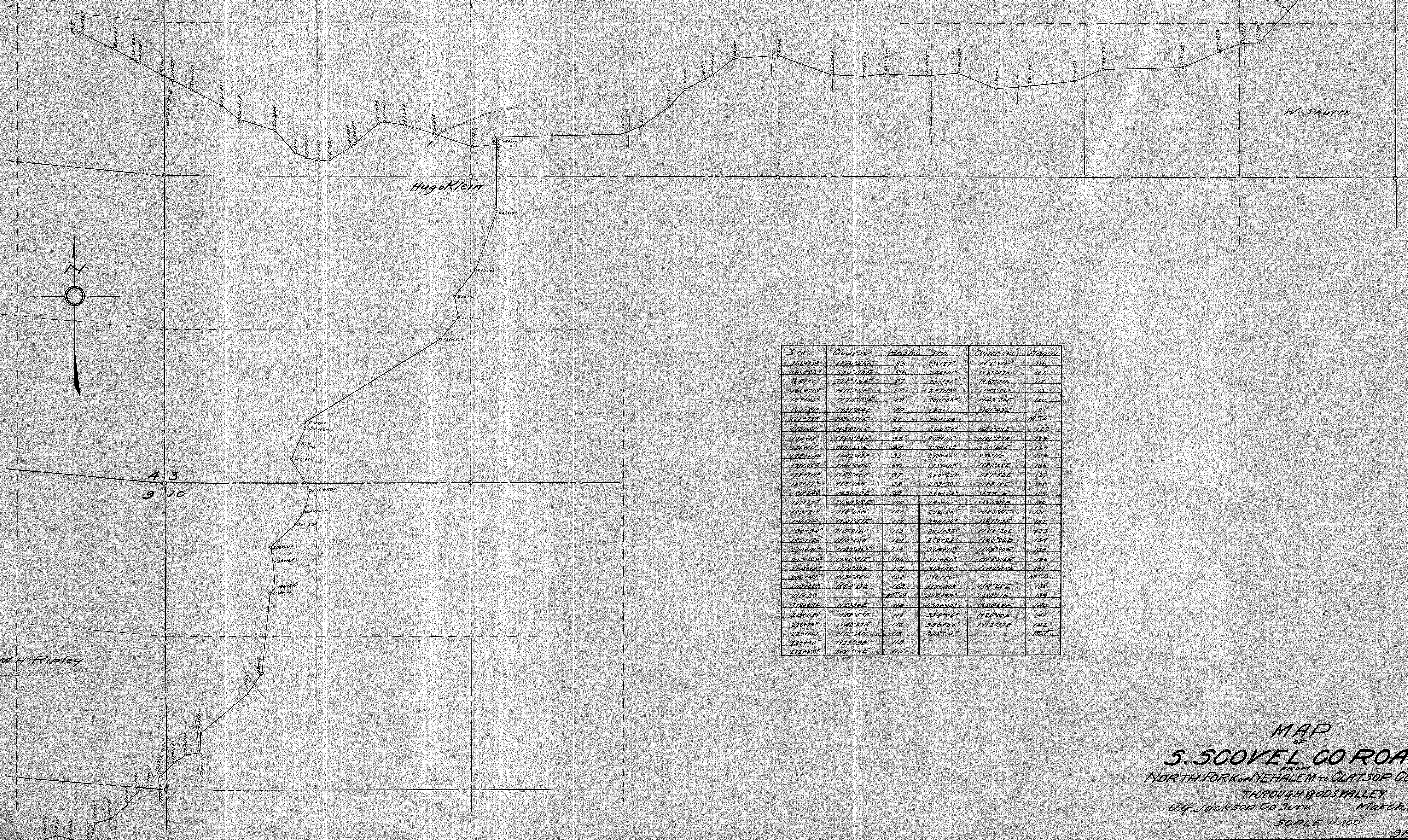


Sta	Course	Angle	Sta	Course	Angle
0+00	S84°34'N	R	18+81'	N41°57'W	11
2+12°	N71°18'W	1	21+40.3	N72°51'W	12
5+60.2	N73°28'W	2	24+61°	N67°12'W	13
8+28.8	N78°19'W	3	26+37°	N63°14'W	14
10+68'	S70°49'W	4	29+26°	N62°33'W	15
13+33.5	S80°33'W	5	31+27.9	N64°38'W	16
15+19.6	S53°00'W	6	32+27.2	N61°38'W	17
15+69.9	S58°11'W	7	32+79'	N61°20'W	18
15+72.7	S53°33'W	8	35+32.2	N61°07'W	19
16+71.7	N73°38'W	9	37+16°	N64°37'W	20
17+73.8	N69°21'W	10	40+36.2	RT.	

Sta	Course	Angle	Sta	Course	Angle
163+78.3	N76°56'E	85	238+27.7	N13°1'W	116
163+82.4	S73°40'E	86	240+51.0	N85°41'E	117
165+00	S78°26'E	87	245+38.0	N67°41'E	118
166+57.4	N163°39'E	88	247+19°	N53°26'E	119
168+42°	N77°40'E	89	250+00°	N42°28'E	120
169+81°	N61°34'E	90	252+00°	N41°23'E	121
171+78°	N32°31'E	91	254+00	M ^{5.5}	
172+97°	N58°46'E	92	254+76°	N62°02'E	122
174+12°	N70°24'E	93	257+00°	N66°27'E	123
175+11.5	N6°22'E	94	270+00°	S70°09'E	124
175+84.2	N42°40'E	95	276+00.2	S86°11'E	125
177+58.9	N16°04'E	96	277+35.5	N82°38'E	126
178+74.5	N82°58'E	97	280+23.4	S87°52'E	127
180+07.3	N37°15'W	98	283+79°	N85°16'E	128
181+74.5	N80°09'E	99	286+53°	S67°37'E	129
182+07.7	N32°38'E	100	290+00°	N85°44'E	130
183+21°	N16°04'E	101	292+00°	N83°30'E	131
186+11.3	N41°37'E	102	296+76°	N67°19'E	132
186+34°	N15°21'W	103	299+37°	N78°20'E	133
190+12.5	N10°04'N	104	306+23°	N66°22'E	134
200+41°	N42°46'E	105	309+71.3	N69°30'E	135
203+28.3	N36°31'E	106	311+61°	N88°48'E	136
204+65.5	N13°00'E	107	313+08°	N42°48'E	137
206+48.7	N3°58'W	108	316+00°	M ⁶	
209+06.5	N24°13'E	109	318+40°	N42°28'E	138
211+20	M ⁴		324+33°	N40°11'E	139
212+62.2	N10°56'E	110	330+30°	N40°28'E	140
213+02°	N80°35'E	111	334+06°	N80°09'E	141
216+75°	N42°07'E	112	336+00°	N42°34'E	142
219+14.0	N12°18'W	113	338+13°	RT.	
230+00°	N30°13'E	114			
232+09°	N20°35'E	115			



MAP OF
S. SCOVEL CO ROAD
 FROM
 NORTH FORK OF NEHALEM TO GLATSOP CO LINE
 THROUGH GODSVALLEY
 U.G. JACKSON CO SURV. March, 1914.
 SCALE 1"=400'
 2,3,9,10-319
SHEET 2