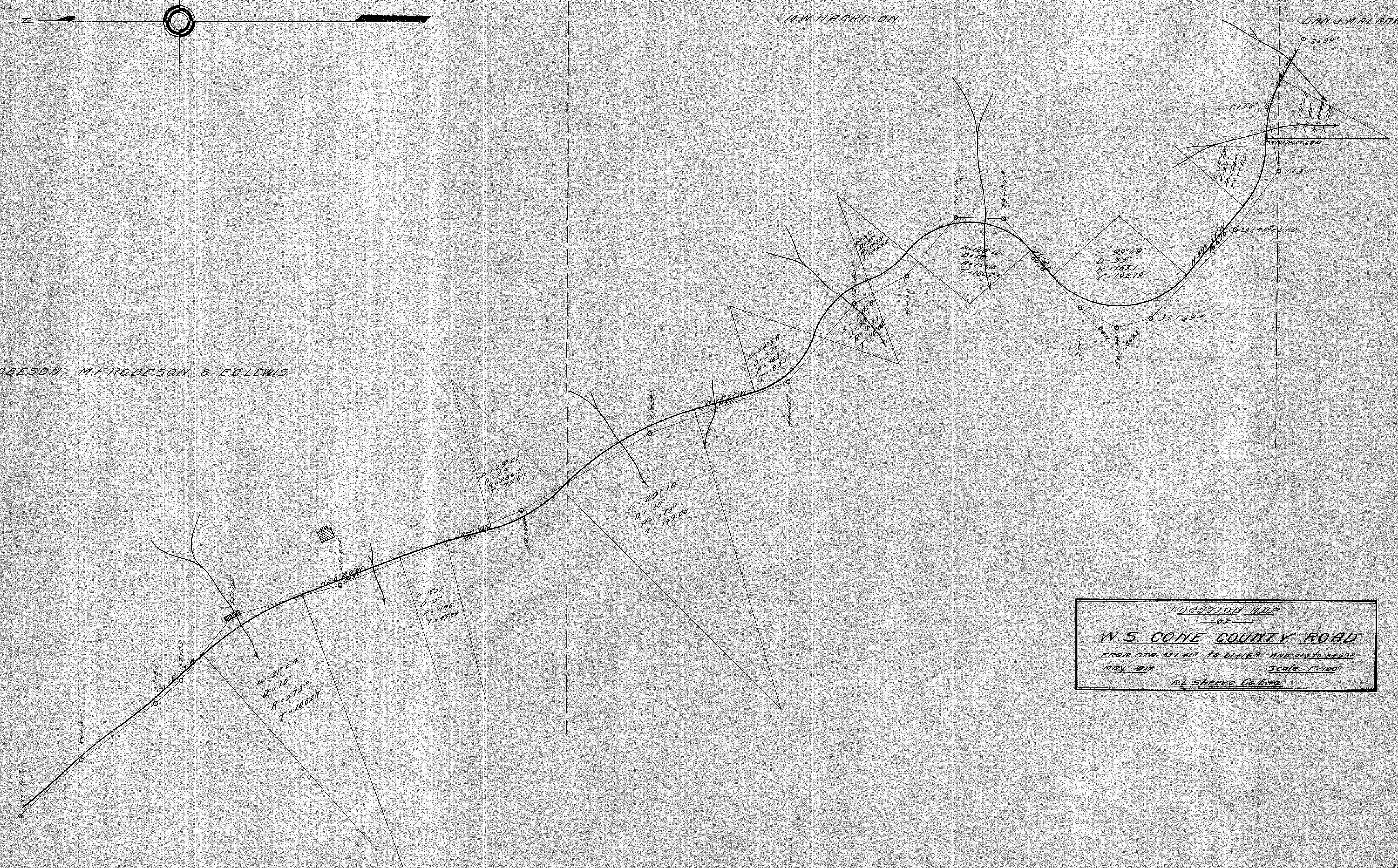


F.C. ROBESON, M.F. ROBESON, & E.C. LEWIS

M.W. HARRISON

DAN J. MALARKY



LOCATION MAP  
 OF  
**W.S. CONE COUNTY ROAD**  
 FROM STA 31+47 TO 61+16.8 AND 61.0 TO 31+99  
 MAY 1917 Scale: 1"=100'  
 RL Shreve Co. Eng.

27,34-1-N,10.