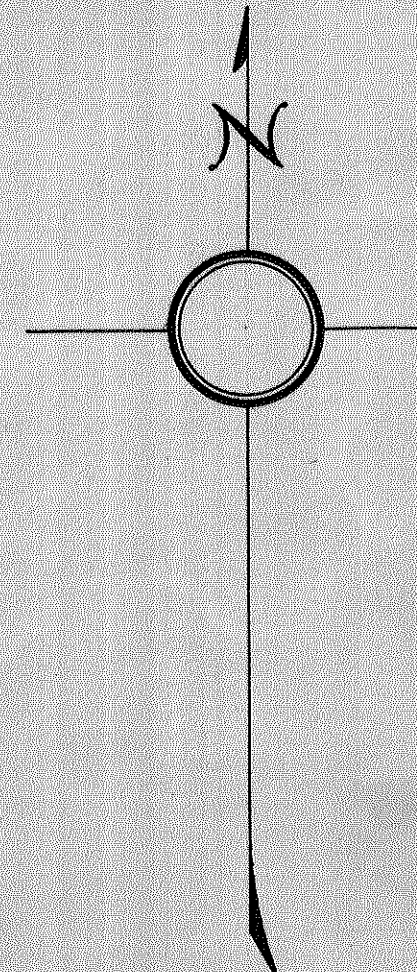
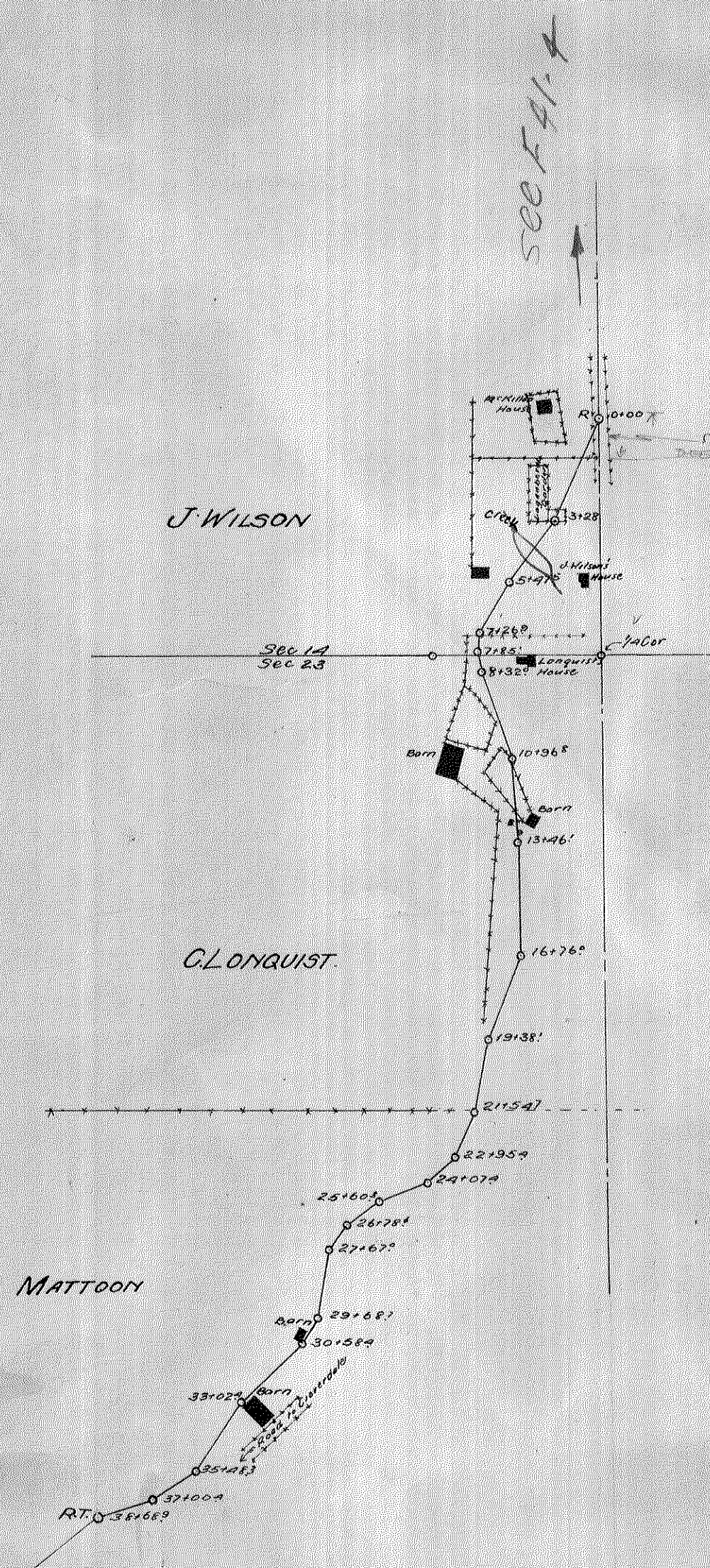


Station	Course	Angle	Sta.	Course	Angle
0+0	535° 37' E	17	24186 ⁵	174° 10' E	13
5+05 ⁴	519° 33' E	1	26+99 ⁴	127° 43' E	14
7+08 ⁴	530° 33' E	2	30+92 ⁴	112° 52' W	15
8+93 ⁸	530° 46 ¹ / ₂ ' E	3	32+24 ⁴	111° 41' E	16
10+12 ⁴	530° 37' E	4	32+86 ⁴	576° 34' E	17
11+15 ⁶	58° 59' E	5	35+07 ⁸	165° 03' E	18
11+76 ⁵	522° 17' E	6	36+17 ⁴	1468° 01' E	19
12+77 ²	536° 07 ¹ / ₂ ' E	7	37+15 ²	580° 36' E	20
14+21 ⁶	519° 42' E	8	37+84 ²	538° 18' E	21
15+15 ²	541° 07' E	9	39+78 ³	585° 54' E	22
16+19 ³	546° 40' E	10	42+49 ⁸	551° 42' E	23
21+35 ⁷	562° 14' E	11	46+27 ²	533° 53' E	24
22+71 ⁶	1487° 51' E	12	53+50 ⁵	RT.	

MAP OF
BARTHROP ROAD
 AT DOLPH,
 SEC. 28, T. 55S, R. 9W, W.M.
 Scale 1"=400' April, 1913.
 U.G. Jackson
 Co. Surveyor.



Station	Course	Angle	Station	Course	Angle
0+00	528° 03' W	R.	22+95 ⁹	547° 52' W	11
3+28 ²	536° 43' W	1	24+07 ⁴	568° 21' W	12
5+47 ⁵	530° 42' W	2	25+60 ³	554° 02' W	13
7+15 ⁴	55° 07' W	3	26+78 ¹	535° 46' W	14
7+72 ⁴	59° 42' E	4	27+67 ²	59° 40' W	15
8+32 ²	518° 49' E	5	29+68 ⁷	550° 52' W	16
10+96 ⁸	54° 16' E	6	30+58 ⁹	546° 21' W	17
13+46 ¹	51° 14' E	7	33+02 ⁴	533° 35' W	18
16+76 ⁶	52° 06' W	8	35+48 ³	567° 10' W	19
19+38 ²	59° 42' W	9	37+00 ⁴	572° 28' W	20
21+54 ⁷	525° 07' W	10	38+68 ⁹	RT.	



MAP of CHANGE
 IN
CO. ROAD bet. HEBO & CLOVERDALE
 SECS 14, 23, T. 45S, R. 10W, W.M.
 SCALE 1"=400' May, 1913.
 Jackson, Co. Surveyor.
 U.G. Jackson

CT 17
 PAGE 26