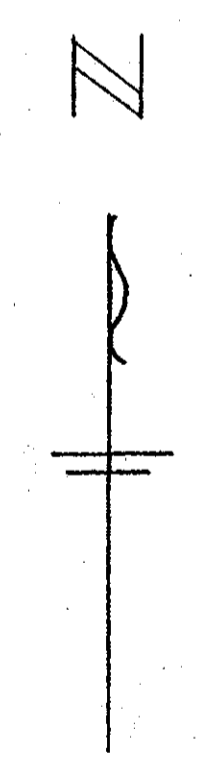
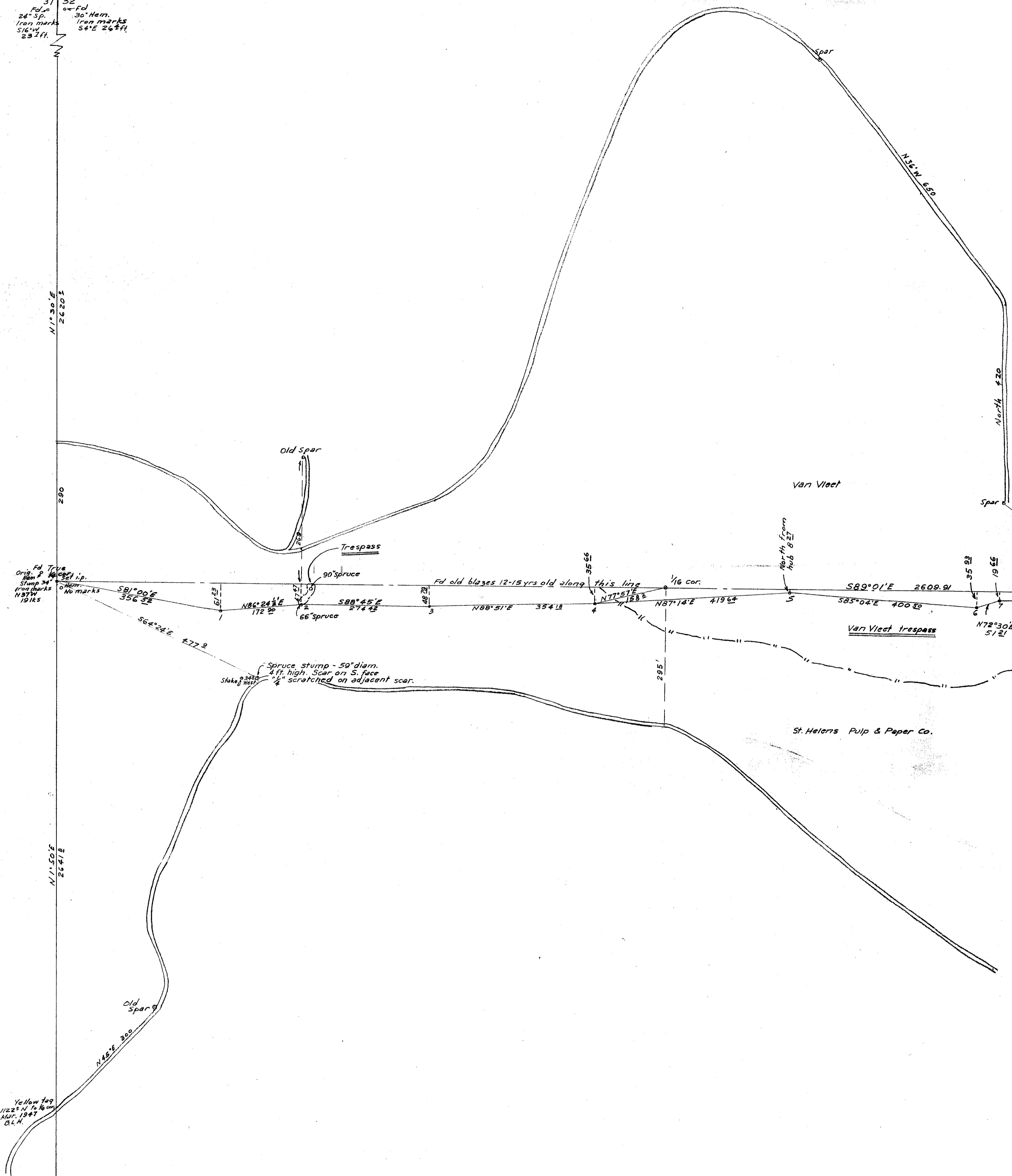


30 Fd 3x3 Hem post  
 31 29  
 32  
 Fd 30  
 24" Sp. Iron marks  
 516' W 23' ft.

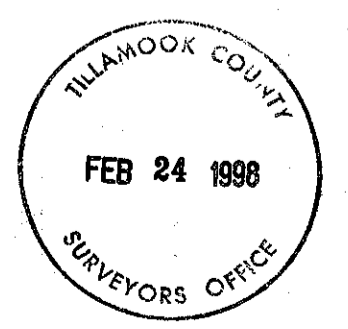
Fd. Trvs  
 Orig. P. 1947  
 Stump 34  
 Iron marks  
 W 115

Ye. flow tag  
 1122' N 72.16 on  
 Mar. 1947  
 B.L.M.

Orig. BT  
 20" Hem. stump - iron marks  
 Iron marks 51  
 Set 2 1/2" post  
 Std. Cor.



ST. HELENS PULP & PAPER CO.  
 LOGGING DIVISION  
 SEASIDE, OREGON  
 TRANSIT LINE SEC. 32 T4N R10W  
 Scale: 1"=100' July 20, 1955  
 Drawn by A.G.S.  
 Approved by \_\_\_\_\_



041032-001