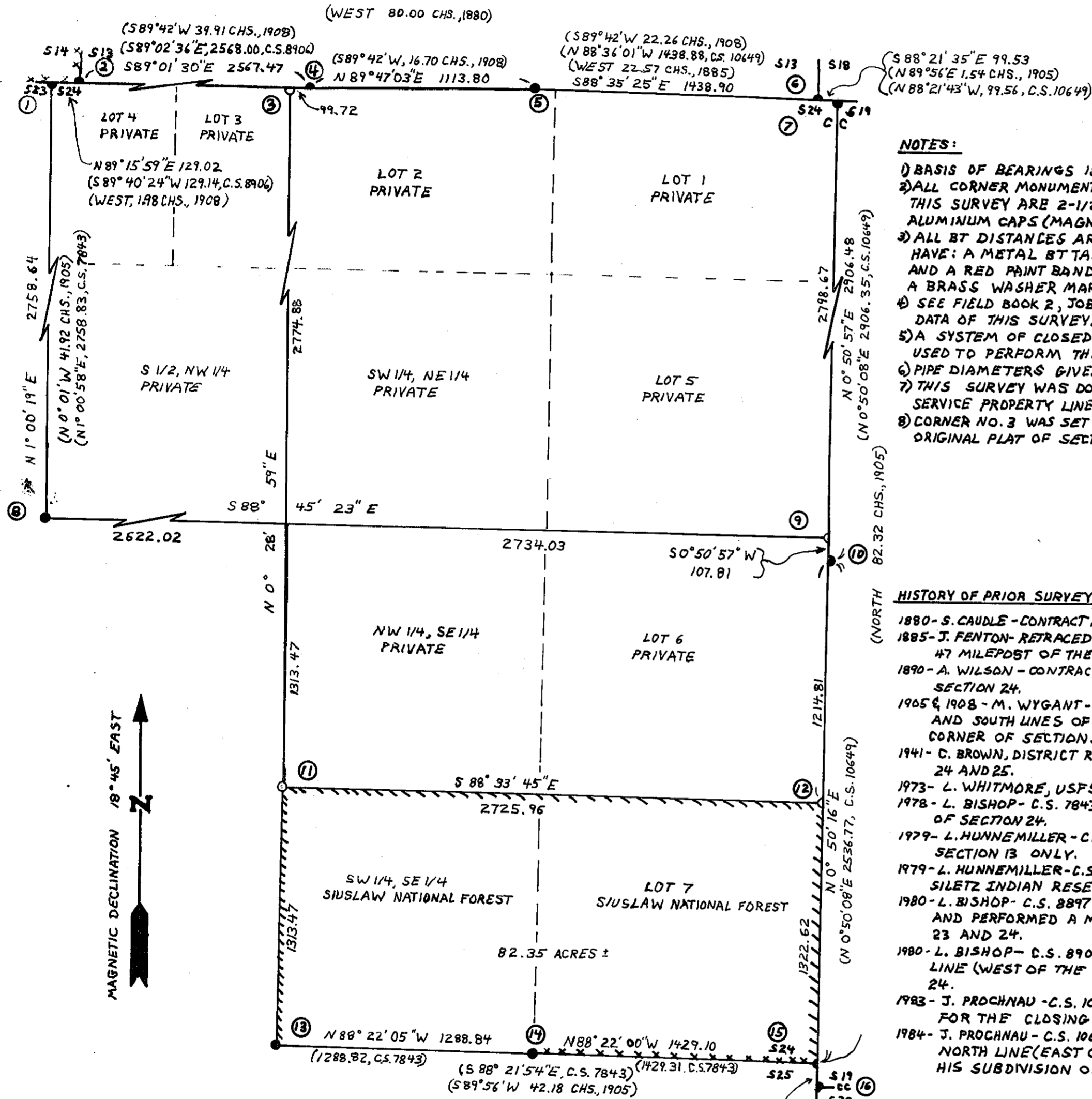


RECORD OF SURVEY  
for the U.S. FOREST SERVICE  
in SECTION 24, T.6S., R.10W., W.M.  
LINCOLN COUNTY, OREGON  
JUNE 29, 1987  
WIDOW ROSE #2 CADASTRAL SURVEY  
CONTRACT NO. 00-0470-7-8102

**LEGEND**  
● MONUMENT FOUND  
○ MONUMENT SET  
--- BOUNDARY LINE POSTED WITH FIBERGLASS POSTS WITH 54-2 SIGNS  
( ) DATA OF RECORD  
--- PREVIOUSLY POSTED LINE  
SCALE 1" = 800' = 152.40 METERS



**NOTES:**

- 1) BASIS OF BEARINGS IS A SOLAR OBSERVATION.
- 2) ALL CORNER MONUMENTS AND REFERENCE MONUMENTS (RM'S) SET BY THIS SURVEY ARE 2-1/2" X 30" ALUMINUM PIPES WITH 3-1/4" ALUMINUM CAPS (MAGNET UNDER CAP).
- 3) ALL BT DISTANCES ARE HORIZONTAL TO CENTER OF TREE. ALL BT'S HAVE: A METAL BT TAG, 'LAND SURVEY MONUMENT' SIGNS ON BACK, AND A RED PAINT BAND. BT'S MARKED ARE DOUBLE BLAZED AND HAVE A BRASS WASHER MARKED 'LS 1102' NAILED TO LOWER BLAZE.
- 4) SEE FIELD BOOK 2, JOB 'WR' OF SPRINGER SURVEYING FILES FOR FIELD DATA OF THIS SURVEY.
- 5) A SYSTEM OF CLOSED TRAVERSES USING A 10" TOTAL STATION WAS USED TO PERFORM THIS SURVEY.
- 6) PIPE DIAMETERS GIVEN ARE INSIDE DIAMETERS.
- 7) THIS SURVEY WAS DONE TO SUBDIVIDE SECTION 24 AND MARK FOREST SERVICE PROPERTY LINES AS SHOWN ON THIS PLAT.
- 8) CORNER NO. 3 WAS SET AT PROPORTIONATE POSITION BASED ON THE ORIGINAL PLAT OF SECTION 24.

**HISTORY OF PRIOR SURVEYS:**

- 1890 - S. CAUDLE - CONTRACT NO. 264 - SURVEYED THE NORTH LINE OF SECTION 24.
- 1895 - J. FENTON - RETRACED THE NORTH LINE OF SECTION 24 AND SET THE 47 MILEPOST OF THE SILETZ INDIAN RESERVATION BOUNDARY.
- 1890 - A. WILSON - CONTRACT NO. 555 - RETRACED THE NORTH LINE OF SECTION 24.
- 1905 & 1908 - M. WYGANT - CONTRACT NO. 758 - SURVEYED THE EAST, WEST AND SOUTH LINES OF SECTION 24. WYGANT ALSO SET THE CLOSING CORNER OF SECTIONS 19 AND 30 IN 1908.
- 1941 - C. BROWN, DISTRICT RANGER, PERPETUATED THE CORNER OF SECTIONS 24 AND 25.
- 1973 - L. WHITMORE, USFS, PERPETUATED THE CORNER OF SECTIONS 24 AND 25.
- 1978 - L. BISHOP - C.S. 7843 - RESURVEYED THE SOUTH AND WEST LINES OF SECTION 24.
- 1979 - L. HUNNEMILLER - C.S. 8504 - PERPETUATED THE 1/4 CORNER OF SECTION 13 ONLY.
- 1979 - L. HUNNEMILLER - C.S. 8505 - PERPETUATED THE 47 MILE POST OF THE SILETZ INDIAN RESERVATION BOUNDARY.
- 1980 - L. BISHOP - C.S. 8897 - RETRACED THE WEST LINE OF SECTION 24 AND PERFORMED A METES AND BOUNDS SURVEY IN SECTIONS 23 AND 24.
- 1980 - L. BISHOP - C.S. 8906 - RETRACED THE WEST LINE, AND THE NORTH LINE (WEST OF THE 1/4 CORNER OF SECTION 13 ONLY), OF SECTION 24.
- 1983 - J. PROCHNAU - C.S. 10315 - SET A CORNER AT PROPORTIONATE POSITION FOR THE CLOSING CORNER OF SECTIONS 19 AND 30.
- 1984 - J. PROCHNAU - C.S. 10649 - RESURVEYED THE EAST LINE AND THE NORTH LINE (EAST OF THE 47 MILE POST) OF SECTION 24 IN HIS SUBDIVISION OF SECTION 19, T.6S., R.9W.

- 1) CLOSING CORNER OF SECTIONS 23 AND 24  
FOUND 3-1/4" ALUMINUM CAP ON 2-1/2" ALUMINUM PIPE (C.S. 7843)  
BT'S FOUND: 30" ALDER, S86°W, 5.2 FT., OPENED FACE  
15" CEDAR, S40°E, 9.0 FT., HEALED FACE  
30" HEMLOCK STUMP, N39°W, 9.1 FT., SCRIBING VISIBLE  
20" CEDAR, S13°W, 37.7 FT., SCRIBING VISIBLE  
T6S R10W  
CC  
S23 | S24  
1978  
PLS 896
- 2) CORNER OF SECTIONS 13 AND 14  
FOUND 3-1/4" ALUMINUM CAP ON 2-1/2" ALUMINUM PIPE (C.S. 8706)  
BT'S FOUND: 6" HEMLOCK STUMP, N38°W, 40 FT., NO MARKS  
41" HEMLOCK STUMP, N12°W, 20.8 FT., SCRIBING VISIBLE  
6" DEAD ALDER, N64°E, 23.0 FT., SCRIBING VISIBLE  
BT'S MARKED: 8" ALDER, N64°E, 9.2 FT., BARK SCRIBED T6S R10W S13 BT  
9" HEMLOCK, N3°W, 33.1 FT. SCRIBED T6S R10W S14 BT  
T6S R10W  
S14 | S13  
1980  
PLS 896
- 3) 1/4 CORNER OF SECTION 24 ONLY  
SET MONUMENT  
BT'S MARKED: 12" HEMLOCK, S42°E, 57.0 FT. SCRIBED 1/4 S24 BT  
14" ALDER, S26°W, 21.8 FT., BARK SCRIBED 1/4 S24 BT  
T6S R10W  
1/4 S24  
LS 1102  
1987
- 4) 1/4 CORNER OF SECTION 13 ONLY  
FOUND 3-1/4" ALUMINUM CAP ON 2-1/2" ALUMINUM PIPE (C.S. 8504)  
BT'S FOUND: 24" ROTTED HEMLOCK STUB, N10°W, 1.3 FT., NO MARKS  
10" HEMLOCK STUB, N37°W, 5.7 FT., SCRIBING VISIBLE  
10" HEMLOCK, N22°E, 10.0 FT., SCRIBING VISIBLE  
BT MARKED: 8" SPRUCE, N33°W, 28.9 FT. SCRIBED 1/4 S13 BT  
T6S R10W  
1/4 S13  
RLS 1050  
1979
- 5) 47 MILEPOST OF SILETZ INDIAN RESERVATION  
FOUND 3-1/4" ALUMINUM CAP ON 2-1/2" ALUMINUM PIPE (C.S. 8505)  
BT'S FOUND: 30" ROTTED HEMLOCK STUB, N1°E, 15.8 FT., NO MARKS  
26" ROTTED HEMLOCK UPROOT, S63°E, 14.5 FT., NO MARKS  
24" HEMLOCK, S34°E, 18.2 FT., SCRIBING VISIBLE  
12" HEMLOCK, N 9°W, 18.5 FT., SCRIBING VISIBLE  
T6S R10W  
S13  
S18  
47M S24  
RLS 1050  
1979
- 6) CORNER OF SECTIONS 13 AND 18  
FOUND 2-1/2" BRASS CAP ON 2" IRON PIPE (C.S. 10649)  
BT'S FOUND: 15" SPRUCE, N56°E, 32.8 FT., SCRIBING VISIBLE  
8" SPRUCE, N47°W (N44°W) 21.7 FT., SCRIBING VISIBLE  
T6S R9W  
S13 | S18  
1984  
PLS 1305
- 7) CLOSING CORNER OF SECTIONS 19 AND 24  
FOUND 2-1/2" BRASS CAP ON 2" IRON PIPE (C.S. 10649)  
BT'S FOUND: 12" HEMLOCK, S 78°W, 22.4 FT., SCRIBING VISIBLE  
10" HEMLOCK, S 47°E, 15.7 FT., SCRIBING VISIBLE  
T6S R9W  
S13  
S24 | S19  
CC  
1984  
PLS 1305
- 8) 1/4 CORNER OF SECTIONS 23 AND 24  
FOUND 3-1/4" ALUMINUM CAP ON 2-1/2" ALUMINUM PIPE (C.S. 7843)  
BT'S FOUND: 8" ALDER, S1°W, 6.2 FT. SCRIBING VISIBLE  
10" ALDER, N37°E, 7.45 FT., SCRIBING VISIBLE  
T6S R10W  
1/4  
S23 | S24  
1978  
PLS 896
- 9) 1/4 CORNER OF SECTION 24 ONLY  
SET MONUMENT AT PROPORTIONATE POSITION, NO ORIGINAL EVIDENCE FOUND  
BT'S MARKED: 14" HEMLOCK, N38°W, 6.4 FT. SCRIBED 1/4 S24 BT  
15" FIR, S74°W, 13.6 FT., SCRIBED 1/4 S24 BT  
T6S  
R10W R9W  
1/4  
S24 |  
LS 1102  
1987
- 10) 1/4 CORNER OF SECTION 19 ONLY  
FOUND 2-1/2" BRASS CAP ON 2" IRON PIPE (C.S. 10649)  
BT'S FOUND: 15" HEMLOCK, N34°E, (N28°E) 57.4 FT., SCRIBING VISIBLE  
18" HEMLOCK, S14°E, 10.2 FT., SCRIBING VISIBLE  
T6S R9W  
1/4  
S19  
1984  
PLS 1305
- 11) CENTER SOUTH 1/16 CORNER OF SECTION 24  
SET MONUMENT  
BT MARKED: 20" ALDER, N45°W, 28.9 FT., BARK SCRIBED CS 1/16 S24 BT  
RM SET: S88°06'E, 44.8 FT. "RM CS 1/16 S24 N88-06W 44.8 FT. LS 1102 1987"  
T6S R10W  
C  
S1/16 | S24  
LS 1102  
1987
- 12) SOUTH 1/16 CORNER OF SECTION 24 ONLY  
SET MONUMENT  
BT MARKED: 12" HEMLOCK, N 65°W, 30.8 FT., SCRIBED S1/16 S24 BT  
RM SET: S1°11'W, 47.3 FT. "RMS 1/16 S24 47.3 FT. N1-11E LS 1102 1987"  
R10W | T6S R9W  
S1/16 | S24  
LS 1102  
1987
- 13) 1/4 CORNER OF SECTIONS 24 AND 25  
FOUND 3-1/4" ALUMINUM CAP ON 2-1/2" ALUMINUM PIPE (C.S. 7843)  
BT'S FOUND: 32" HEMLOCK, S60°W, 57.3 FT., HEALED FACE  
20" ALDER, N 29°W, 34.5 FT., BARK SCRIBING VISIBLE  
ROTTED FIR STUMP, S54°W, 30.4 FT., NO MARKS  
T6S R10W  
S24  
1/4  
S25  
1978  
PLS 896
- 14) EAST 1/16 CORNER OF SECTIONS 24 AND 25  
FOUND 3-1/4" ALUMINUM CAP ON 2-1/2" ALUMINUM PIPE (C.S. 7843)  
BT'S FOUND: 20" ALDER, N 48°W, 14.55 FT., BARK SCRIBING VISIBLE  
36" SPRUCE, S78°E, 14.75 FT., HEALED FACE  
RM SET: S89°29'E, 43.6 FT. "RME 1/16 S24 N89-29W 43.6 FT. LS 1102 1987"  
T6S R10W  
S24  
S25  
E1/16  
1978  
PLS 896
- 15) CORNER OF SECTIONS 24 AND 25  
FOUND 3-1/4" ALUMINUM CAP ON 2-1/2" ALUMINUM PIPE (C.S. 7843)  
BT'S FOUND: 20" ROTTED ALDER STUB, N25°W, 4.0 FT., NO MARKS  
30" ROTTED ALDER STUB, S53°W, 22.4 FT., NO MARKS  
30" HEMLOCK, N13°W, 32.3 FT., HEALED FACE  
24" HEMLOCK, S28-1/2°W, 19.3 FT., HEALED FACE  
T6S T6S  
S24 | S19  
R10W R9W  
1978  
LS 896
- 16) CLOSING CORNER OF SECTIONS 19 AND 30  
FOUND 2-1/2" BRASS CAP ON 2" IRON PIPE (C.S. 10315)  
BT'S FOUND: 12" ALDER, N 48°E, 30.7 FT., SCRIBING VISIBLE  
16" HEMLOCK, S12°E, 24.8 FT., SCRIBING VISIBLE  
T6S  
R10W R9W  
S25 | S19  
S30  
1983  
PLS 1305

I, NORMAN D. SPRINGER, REGISTERED LAND SURVEYOR IN THE STATE OF OREGON, HEREBY CERTIFY THAT THIS PLAT AND THE NOTES HEREON ARE A CORRECT REPRESENTATION OF A SURVEY I PERFORMED DURING JUNE & JULY, 1987, AT THE REQUEST OF THE U.S.D.A. (FOREST SERVICE) IN ACCORDANCE WITH THE STATUTES OF THE STATE OF OREGON AND THE ARTICLES OF MY CONTRACT.

SPRINGER SURVEYING  
37056 MOSS ROCK DRIVE  
CORYALLIS, OREGON 97330  
PHONE 745-5798

REGISTERED  
PROFESSIONAL  
LAND SURVEYOR

Norman D. Springer

OREGON  
JULY 22, 1977  
NORMAN D. SPRINGER  
1102

