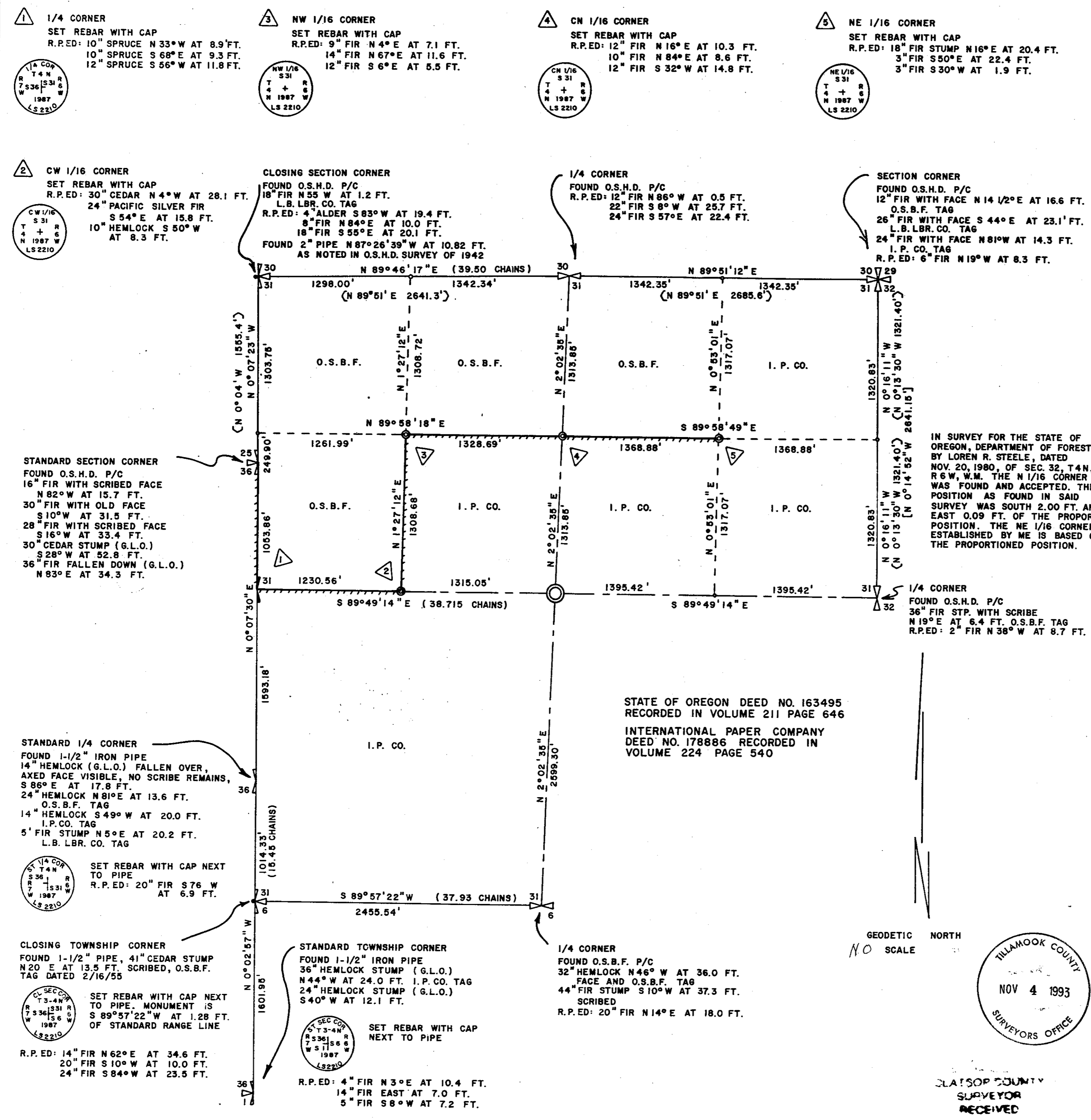


RECORD OF SURVEY
 FOR
 INTERNATIONAL PAPER COMPANY
 IN
 THE NE 1/4 AND THE NW 1/4
 OF
SEC. 31, T4N, R6W, W.M.
 CLATSOP COUNTY, OREGON



NOTES

- 1) BEARINGS BASED ON SOLAR OBSERVATION TAKEN AUGUST 7, 1987 AT LAT. 45°47'33", LONG. 123°28'02"
- 2) MONUMENTS SET ARE NO. 5 REBAR 30 IN. LONG WITH 1 AND 1/2 IN. ALUMINUM CAP STAMPED, SEE CORNER DESCRIPTION.
- 3) REFERENCE TREES HAVE 9d NAIL IN BLAZE AT BASE OF TREE FACING CORNER. THE BEARING AND DISTANCE ARE FROM CORNER TO TREE. THE BEARINGS ARE COMPASS BEARINGS, DECLINATION 21 30' EAST. THE DISTANCES ARE MEASURED FROM THE CORNER TO THE 9d NAIL. AN INTERNATIONAL PAPER CO. LOCATION TAG FACING CORNER. A 1"x1"x5" ALUMINUM POST SET 1 FT. NORTH OF MONUMENT.

NARRATIVE

THE EAST BOUNDARY OF T4N, R7W, WAS ORIGINALLY SURVEYED BY JOHN J. McQUINN UNDER CONTRACT NO. 585 DATED SEPT. 11, 1891. SAID McQUINN ALSO SURVEYED T4N, R6W, UNDER CONTRACT NO. 601, DATED JUNE 27, 1892.

THE NE SECTION CORNER OF SEC. 31, T4N, R6W, WAS FOUND AND MONUMENTED BY THE O.S.H.D. IN 1942. THE O.S.H.D. ALSO FOUND THE CLOSING CORNER COMMON TO SECTIONS 30-31 (SEE CS NO. BT-256-7), THE STANDARD SECTION CORNERS COMMON TO SECTIONS 25-36 AND 13-24 OF T4N, R7W. THE 1/4 CORNERS COMMON TO SECTIONS 30-31 AND 31-32 T4N, R6W, WERE ESTABLISHED BY O.S.H.D. IN 1942. THE STANDARD 1/4 CORNER TO SECTION 36, T4N, R7W, WAS FOUND AND MONUMENTED BY LONG BELL LUMBER CO. IN 1957. THE CLOSING TOWNSHIP CORNER COMMON TO SECTIONS 6-31 T3-4N, R6W, WAS FOUND AS DESCRIBED (SEE CS NO. BT-159-3). THE STANDARD TOWNSHIP CORNER COMMON TO SECTIONS 1-36, T3-4N, R7W, WAS FOUND AND MONUMENTED BY LONGBELL LUMBER CO. IN 1957. THE 1/4 CORNER COMMON TO SECTIONS 6-31, T3-4N, R6W, WAS FOUND AND MONUMENTED BY O.S.B.O.F. (SEE CS NO. BT 202)

THE SUBDIVISION OF SECTION 31, T4N, R6W, W.M. IS BASED ON THE CORNERS AS FOUND AND NOTED HERE ON IN CONFORMANCE WITH THE RULES AND REGULATIONS AS PER "THE MANUAL OF INSTRUCTIONS FOR THE SURVEY OF THE PUBLIC LANDS OF THE U.S.", 1973 EDITION.

LEGEND

- ✕ SECTION CORNER, 1/4 CORNER FOUND
- ⊙ 1/4 CORNER, 1/16 CORNER ESTABLISHED THIS SURVEY MONUMENTS SET OCTOBER 7 AND 8, 1987
- - CLOSING SECTION CORNER FOUND
- - CALCULATED POSITION
- LINE BLAZED AND PAINTED, 1"x1"x5" ALUMINUM POSTS SET ON LINE
- () - RECORD DISTANCE FROM G.L.O. SURVEY
- () - RECORD BEARING AND DISTANCE FROM 1942 O.S.H.D. SURVEY
- [] - RECORD BEARING AND DISTANCE FROM SURVEY DATED NOV. 20, 1980 FOR THE STATE OF OREGON, DEPARTMENT OF FORESTRY

O.S.H.D. P/C - OREGON STATE HIGHWAY DEPARTMENT 2" GALVANIZED PIPE WITH STAMPED CAP
 O.S.B.F. - OREGON STATE BOARD OF FORESTRY
 I.P.CO. - INTERNATIONAL PAPER COMPANY
 L.B.LBR.CO. - LONGBELL LUMBER COMPANY

SURVEYOR'S CERTIFICATE

THIS MAP CORRECTLY REPRESENTS A SURVEY MADE BY ME OR UNDER MY DIRECTION IN CONFORMANCE WITH THE REQUIREMENTS OF ORS 209-250 AT THE REQUEST OF INTERNATIONAL PAPER CO. IN AUGUST 1987.

REGISTERED PROFESSIONAL LAND SURVEYOR
George J. Ford
 OREGON
 GEORGE J. FORD

TILLAMOOK COUNTY
 NOV 4 1993
 SURVEYORS OFFICE

CLATSOP COUNTY
 SURVEYOR
 RECEIVED
 OCT 21 1987
 FILED 10-21-87

STANDARD SECTION CORNER
 FOUND O.S.H.D. P/C
 16" FIR WITH SCRIBED FACE
 N 82°W AT 15.7 FT.
 30" FIR WITH OLD FACE
 S 10°W AT 31.5 FT.
 28" FIR WITH SCRIBED FACE
 S 16°W AT 33.4 FT.
 30" CEDAR STUMP (G.L.O.)
 S 28°W AT 52.8 FT.
 36" FIR FALLEN DOWN (G.L.O.)
 N 83°E AT 34.3 FT.

STANDARD 1/4 CORNER
 FOUND 1-1/2" IRON PIPE
 14" HEMLOCK (G.L.O.) FALLEN OVER,
 AXED FACE VISIBLE, NO SCRIBE REMAINS,
 S 86°E AT 17.8 FT.
 24" HEMLOCK N 81°E AT 13.6 FT.
 O.S.B.F. TAG
 14" HEMLOCK S 49°W AT 20.0 FT.
 I.P.CO. TAG
 5" FIR STUMP N 5°E AT 20.2 FT.
 L.B. LBR. CO. TAG

1/4 COR
 T 4 N
 R 6 W
 S 31
 W 1987
 LS 2210

SET REBAR WITH CAP NEXT TO PIPE
 R.P. ED: 20" FIR S 76 W AT 6.9 FT.

CLOSING TOWNSHIP CORNER
 FOUND 1-1/2" PIPE, 41" CEDAR STUMP
 N 20°E AT 13.5 FT. SCRIBED, O.S.B.F.
 TAG DATED 2/16/55

CL SEC COR
 T 3-4 N
 R 6 W
 S 31
 W 1987
 LS 2210

SET REBAR WITH CAP NEXT TO PIPE. MONUMENT IS
 S 89°57'22"W AT 1.28 FT.
 OF STANDARD RANGE LINE

R.P. ED: 14" FIR N 62°E AT 34.6 FT.
 20" FIR S 10°W AT 10.0 FT.
 24" FIR S 84°W AT 23.5 FT.

STANDARD TOWNSHIP CORNER
 FOUND 1-1/2" IRON PIPE
 36" HEMLOCK STUMP (G.L.O.)
 N 44°W AT 24.0 FT. I.P.CO. TAG
 24" HEMLOCK STUMP (G.L.O.)
 S 40°W AT 12.1 FT.

SEC COR
 T 3-4 N
 R 6 W
 S 31
 W 1987
 LS 2210

SET REBAR WITH CAP NEXT TO PIPE

R.P. ED: 4" FIR N 3°E AT 10.4 FT.
 14" FIR EAST AT 7.0 FT.
 5" FIR S 8°W AT 7.2 FT.

1/4 CORNER
 FOUND O.S.B.F. P/C
 32" HEMLOCK N 46°W AT 36.0 FT.
 FACE AND O.S.B.F. TAG
 44" FIR STUMP S 10°W AT 37.3 FT.
 SCRIBED
 R.P. ED: 20" FIR N 14°E AT 18.0 FT.

STATE OF OREGON DEED NO. 163495
 RECORDED IN VOLUME 211 PAGE 646
 INTERNATIONAL PAPER COMPANY
 DEED NO. 178886 RECORDED IN
 VOLUME 224 PAGE 540

IN SURVEY FOR THE STATE OF OREGON, DEPARTMENT OF FORESTRY, BY LOREN R. STEELE, DATED NOV. 20, 1980, OF SEC. 32, T4N, R6W, W.M. THE N 1/16 CORNER WAS FOUND AND ACCEPTED. THE POSITION AS FOUND IN SAID SURVEY WAS SOUTH 2.00 FT. AND EAST 0.09 FT. OF THE PROPORTION POSITION. THE NE 1/16 CORNER ESTABLISHED BY ME IS BASED ON THE PROPORTIONED POSITION.

CS# B-8627