

TOWNSHIP 3 SOUTH, RANGE 8 WEST, OF THE WILLAMETTE MERIDIAN, OREGON.

DEPENDENT RESURVEY, AND SUBDIVISION OF SECTION 19

Sec. 13

Sec. 18

Sec. 17

FOR FIELD NOTES SEE C.S.
FIELD NOTE BIN 5.19 3S.8

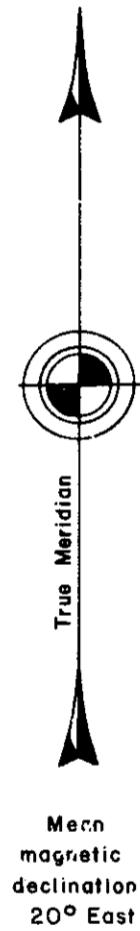
The history of surveys is contained in the field notes.

This plat represents a dependent resurvey of a portion of the west boundary and subdivisional lines, T. 3 S., R. 8 W., Willamette Meridian, Oregon, designed to restore the corners in their true original locations according to the best available evidence, and the subdivision of section 19.

Except as shown hereon, the lottings and areas are as shown on the plat approved December 31, 1884.

The survey was executed by Frank A. Tuers and Ronald E. Paisley, Cadastral Surveyors, beginning March 11, 1985, and completed April 22, 1985, pursuant to Special Instructions dated January 24, 1985, under Group Number 1247, Oregon.

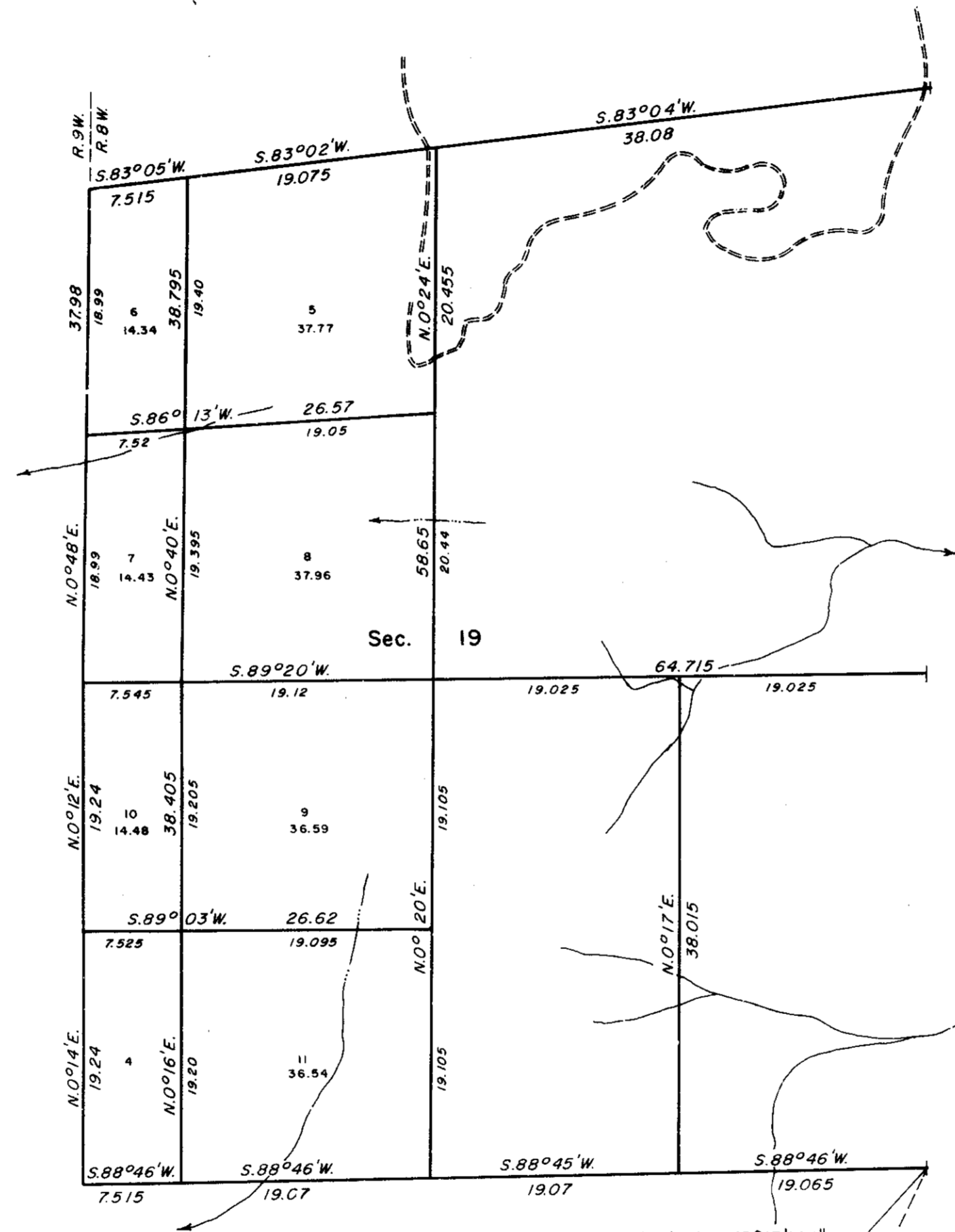
Timber in this area consists of fir, hemlock, cedar, alder, and maple.



Sec. 24

Sec. 19

Sec. 20



Latitude 45°17'14.1"N.
Longitude 123°42'18.8"W.

UNITED STATES DEPARTMENT OF THE INTERIOR
BUREAU OF LAND MANAGEMENT
Portland, Oregon August 28, 1987

This plat is strictly conformable to the approved field notes, and the survey, having been correctly executed in accordance with the requirements of law and the regulations of this Bureau, is hereby accepted.

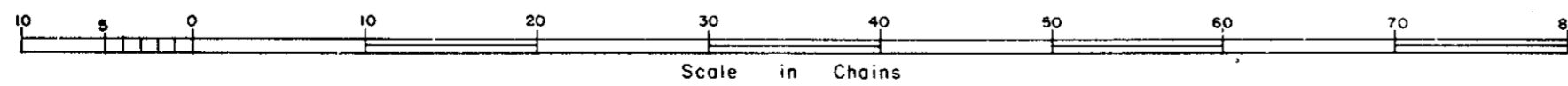
For the Director

William W. Glenn
Chief Cadastral Surveyor of Oregon

Sec. 25

Sec. 30

Sec. 29



U.S.C. & G.S.
HEBO
1908, 1985