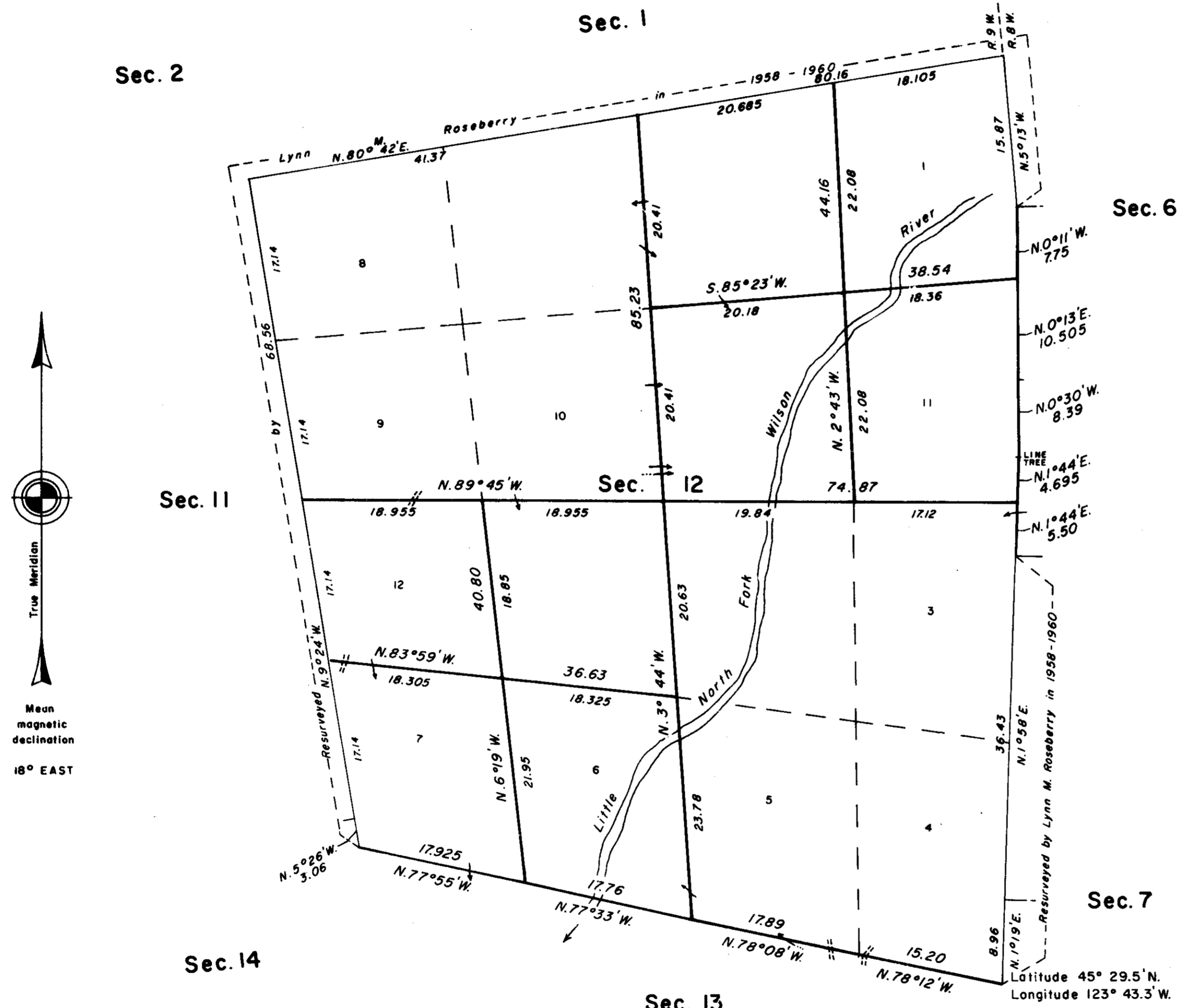


TOWNSHIP 1 SOUTH, RANGE 9 WEST, OF THE WILLAMETTE MERIDIAN, OREGON

DEPENDENT RESURVEY AND SUBDIVISION OF SECTION 12



FOR FIELD NOTES SEE C.S. FIELD
NOTEBOOK S. 12 S. 9

The history of surveys is contained in the field notes.

This plat represents a dependent resurvey of a portion of the east boundary and subdivisional lines, T. 1 S., R. 9 W., Willamette Meridian, Oregon, designed to restore the corners in their true original locations according to the best available evidence, and the subdivision of section 12.

The lottings and areas are as shown on the plat approved September 24, 1895, and the plat accepted April 15, 1963.

The survey was executed by Frank A. Tuers and Ronald E. Paisley, Cadastral Surveyors, beginning June 5, 1984, and completed August 7, 1984, pursuant to Special Instructions dated January 6, 1984, under Group Number 1193, Oregon.

Timber in this area consists of hemlock, cedar, fir, spruce, maple, and alder.

UNITED STATES DEPARTMENT OF THE INTERIOR
BUREAU OF LAND MANAGEMENT
Portland, Oregon June 27, 1986

This plat is strictly conformable to the approved field notes, and the survey, having been correctly executed in accordance with the requirements of law and the regulations of this Bureau, is hereby accepted.

For the Director

William W. Glanville
Chief Cadastral Surveyor of Oregon