

TOWNSHIP 4 SOUTH, RANGE 8 WEST, OF THE WILLAMETTE MERIDIAN, OREGON
DEPENDENT RESURVEY AND SUBDIVISION OF SECTION 36

SEE NOTE/BIN
458 SEC 36

Sec. 26

Sec. 25

Sec. 30

Sec. 35

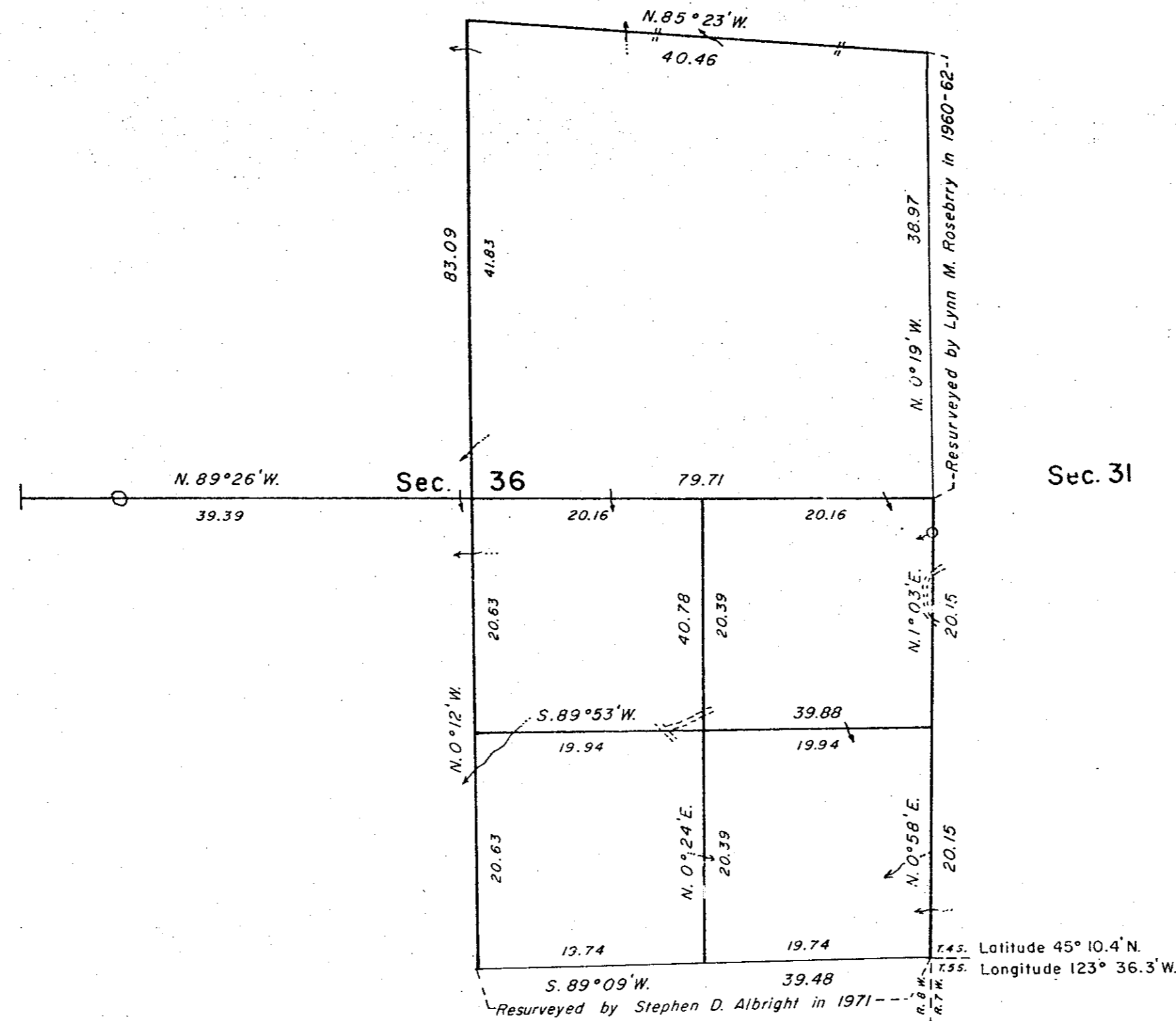
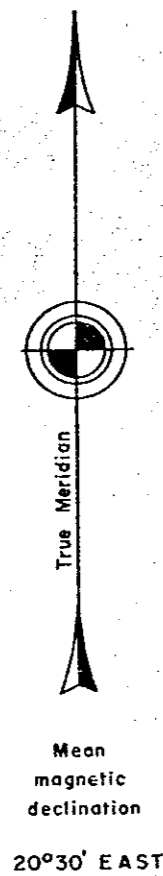
Sec. 36

Sec. 31

Sec. 2

Sec. 1

Sec. 6



Latitude 45° 10.4' N.
Longitude 123° 36.3' W.

A history of surveys is contained in the field notes.

This plat represents a dependent resurvey of a portion of the east boundary and subdivisional lines, T. 4 S., R. 8 W., Willamette Meridian, Oregon, designed to restore the corners in their true original locations according to the best available evidence, and the subdivision of section 36.

The lottings and areas are as shown on the plat approved December 31, 1884.

The survey was executed by Stephen D. Hardin, Cadastral Surveyor, beginning August 2, 1984, and completed August 23, 1984, pursuant to Special Instructions dated July 18, 1984, under Group Number 1221, Oregon.

Timber in this area consists of fir, cedar, maple, alder, and cherry.

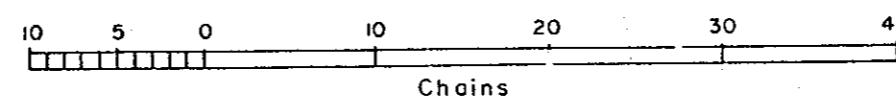
UNITED STATES DEPARTMENT OF THE INTERIOR
BUREAU OF LAND MANAGEMENT
Portland, Oregon December 20, 1985

This plat is strictly conformable to the approved field notes, and the survey, having been correctly executed in accordance with the requirements of law and the regulations of this Bureau, is hereby accepted.

For the Director

William W. Glavin

Chief Cadastral Surveyor of Oregon



USA

