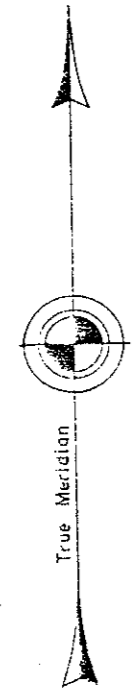
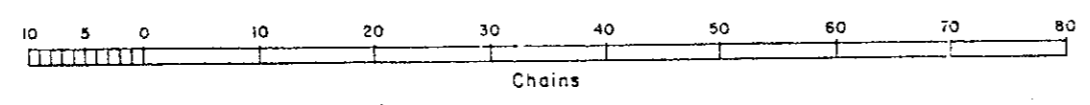
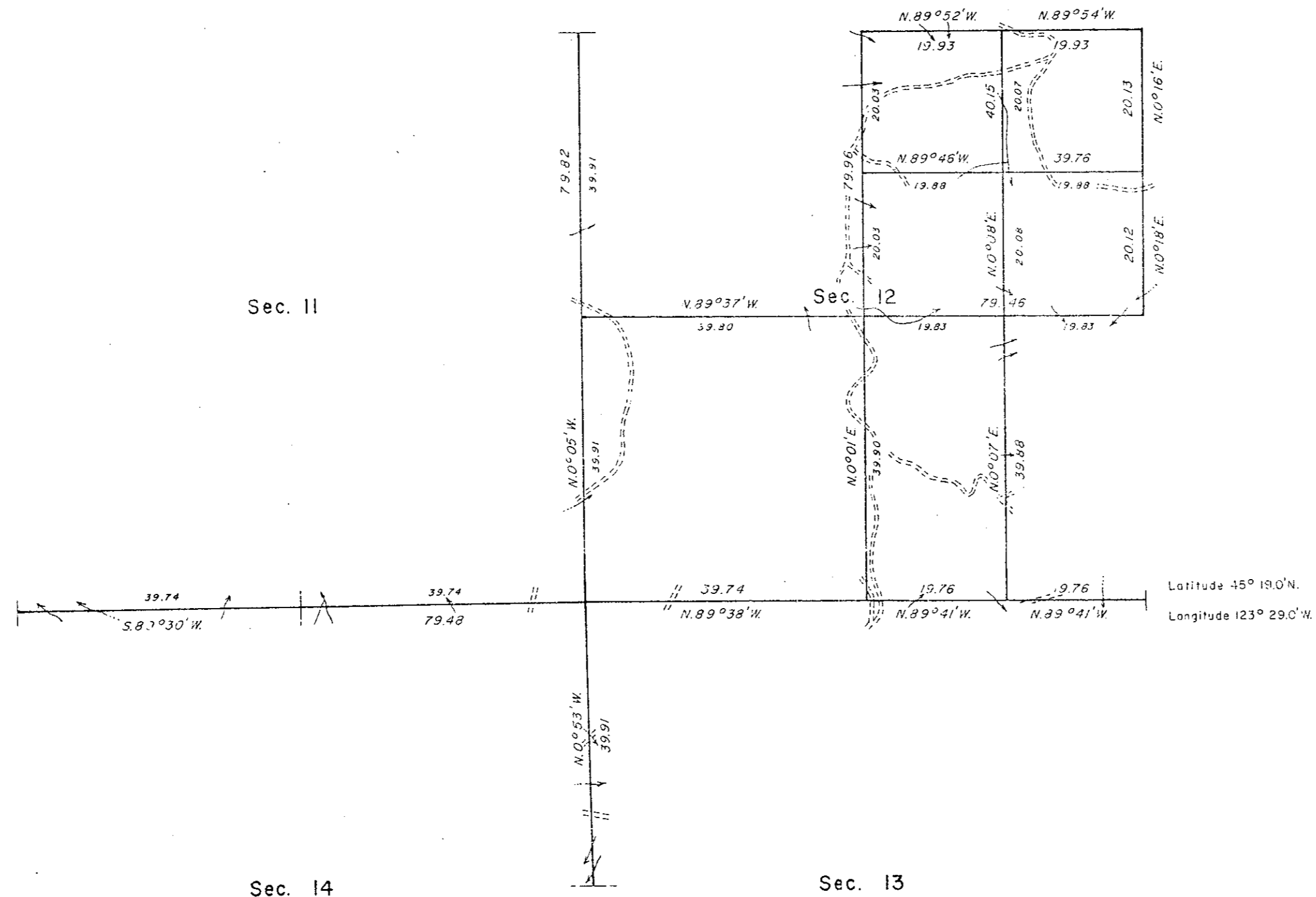


# TOWNSHIP 3 SOUTH, RANGE 7 WEST, OF THE WILLAMETTE MERIDIAN, OREGON

## DEPENDENT RESURVEY AND SUBDIVISION OF SECTION 12



Mean magnetic declination  
21°30' EAST



A history of surveys is contained in the field notes.

This plat represents a dependent resurvey of a portion of the east boundary and subdivisional lines, T. 3 S., R. 7 W., Willamette Meridian, Oregon, designed to restore the corners in their true original locations according to the best available evidence, and the subdivision of section 12.

The lottings and areas are as shown on the plats approved October 27, 1873 and December 24, 1941.

The survey was executed by Stephen D. Hardin, Cadastral Surveyor, beginning April 10, 1980, and completed May 27, 1980, pursuant to Special Instructions dated April 7, 1980, for Group No. 1025, Oregon.

Timber in this area consists of fir, hemlock, alder, maple, and cedar.

UNITED STATES DEPARTMENT OF THE INTERIOR  
BUREAU OF LAND MANAGEMENT  
Portland, Oregon May 11, 1984

This plat is strictly conformable to the approved field notes, and the survey, having been correctly executed in accordance with the requirements of law and the regulations of this Bureau, is hereby accepted.

For the Director

*William W. Glenn*

Chief Cadastral Surveyor of Oregon

F-40-338

