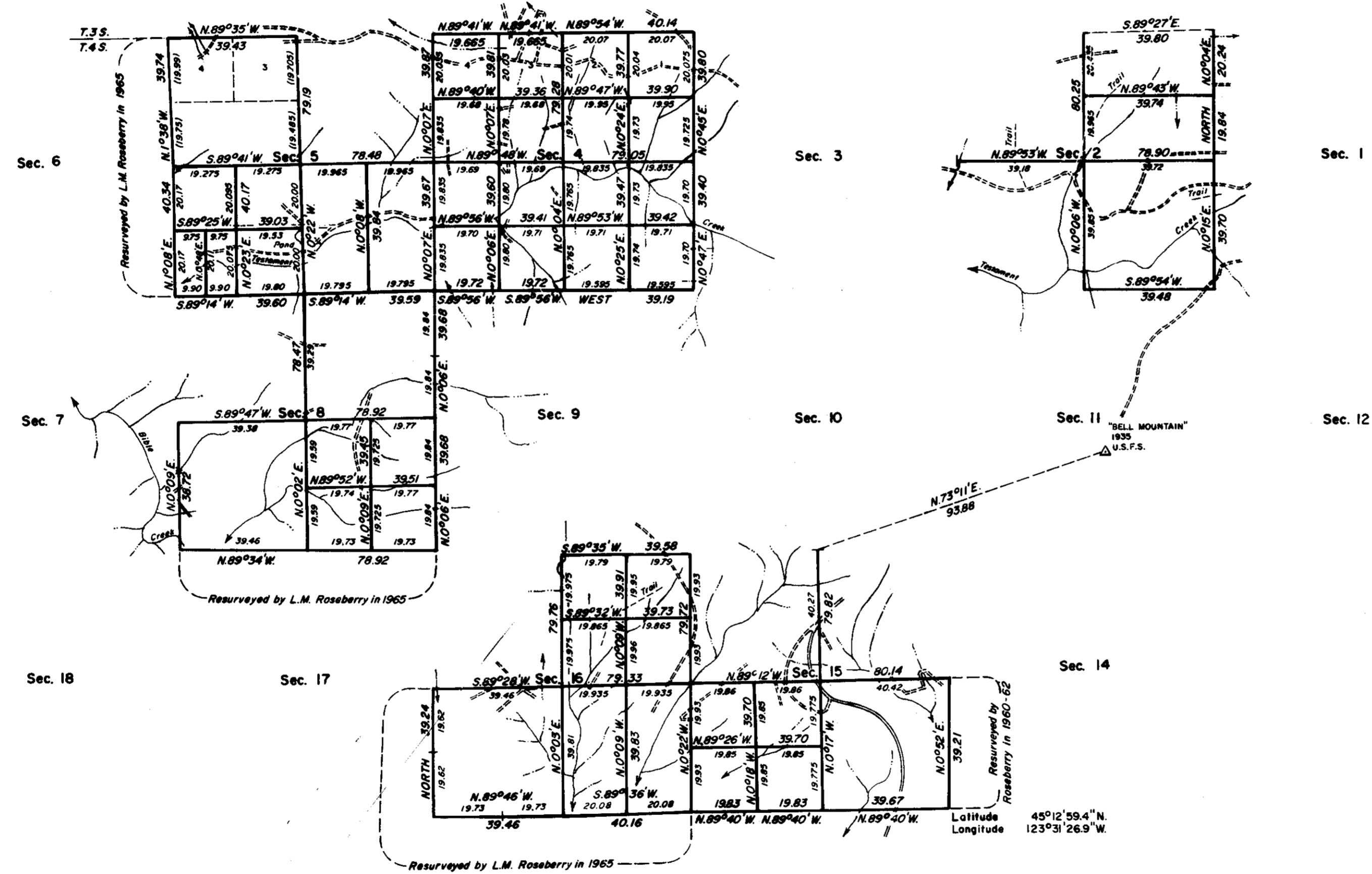


# TOWNSHIP 4 SOUTH, RANGE 7 WEST, OF THE WILLAMETTE MERIDIAN, OREGON.

## DEPENDENT RESURVEY AND SUBDIVISION OF SECTIONS 2, 4, 5, 8, 15, AND 16

Sec. 31                      Sec. 32                      Sec. 33                      Sec. 34                      Sec. 35                      Sec. 36



FOR FIELD NOTES SEE C.S.  
FIELD NOTE BIN S. 4 4 S. 7

A history of surveys is contained in the field notes.

This plat represents a dependent resurvey of a portion of the north boundary and subdivisional lines, T. 4 S., R. 7 W., Willamette Meridian, Oregon, designed to restore the corners in their true original locations according to the best available evidence, and the subdivision of sections 2, 4, 5, 8, 15, and 16.

The lottings and areas are as shown on the plat approved October 27, 1873.

The survey was executed by Frank A. Tuers, Stephen D. Hardin, and Robert L. Aarseth, Cadastral Surveyors, beginning August 6, 1980 and completed June 1, 1981, pursuant to Special Instructions dated May 28, 1980 for Group No. 1031, Oregon.

Timber in this area consists of fir, hemlock, alder, cedar, wild cherry, and maple.

UNITED STATES DEPARTMENT OF THE INTERIOR  
BUREAU OF LAND MANAGEMENT  
Portland, Oregon                      April 28, 1983

This plat is strictly conformable to the approved field notes, and the survey, having been correctly executed in accordance with the requirements of law and the regulations of this Bureau, is hereby accepted.

For the Director

*William W. Glenn*

Chief Cadastral Surveyor of Oregon

