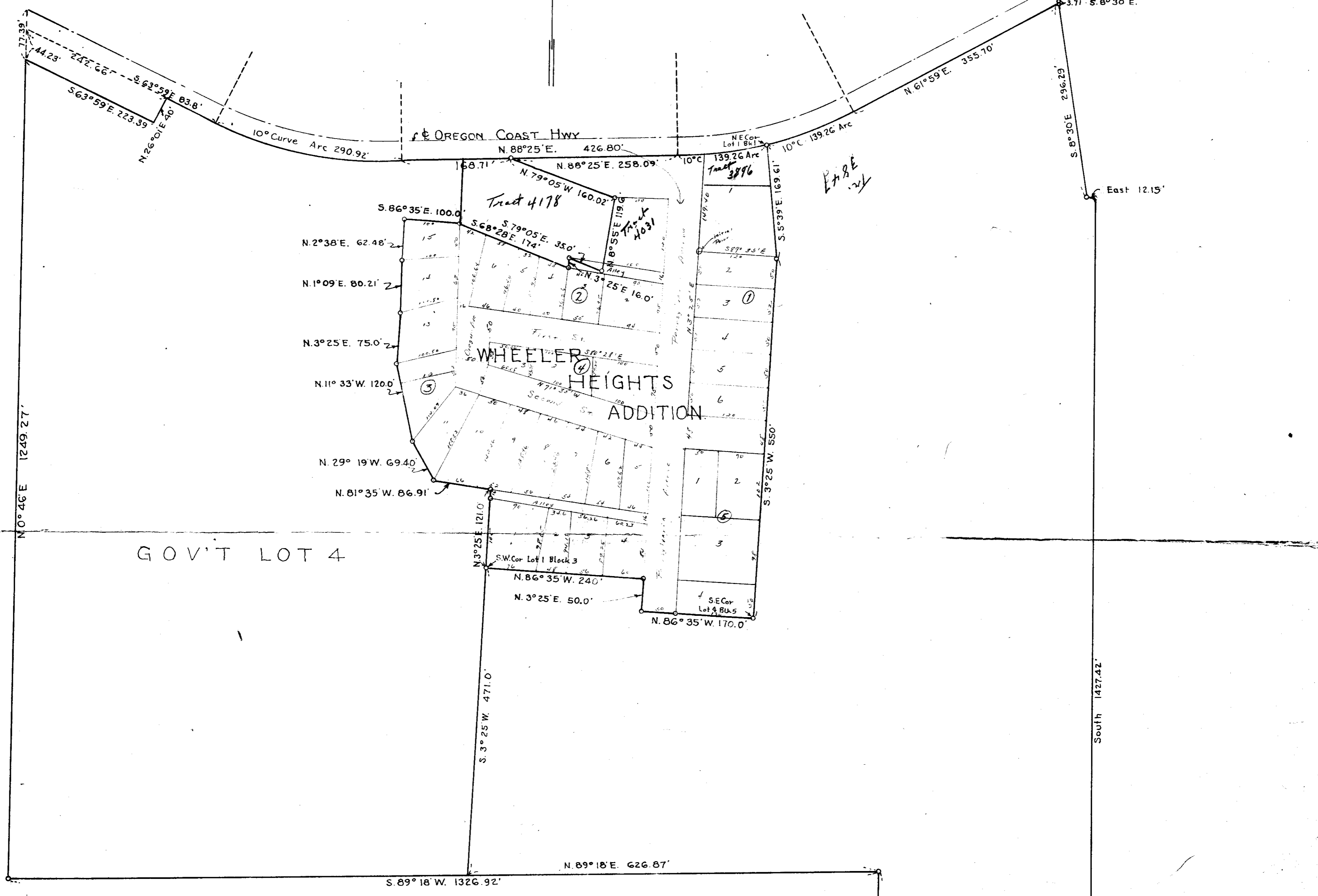


6/2/46
H. Mungler

INITIAL POINT
CITY OF WHEELER



GOV'T LOT 4

WHEELER HEIGHTS
ADDITION

BOATWRIGHT ENGINEERING & SURVEYING CO.
 CIVIL ENGINEERS SALEM, OREGON
 SURVEY FOR
 BRUNO STRUVÉ.
 PART OF
 GOV'T. LOT 4, SEC 3, T2N, R10W.
 TILLAMOOK COUNTY OREGON
 Date: Feb. 1946 Survey By: H. Mungler Drawing By: W.K. Griffiths Survey No. 4

1/4 Sec. Cor.
 SEC 3, T2N, R10W.W.M.
 SEC. 10, T2N, R10W.W.M.

11

F-40-320