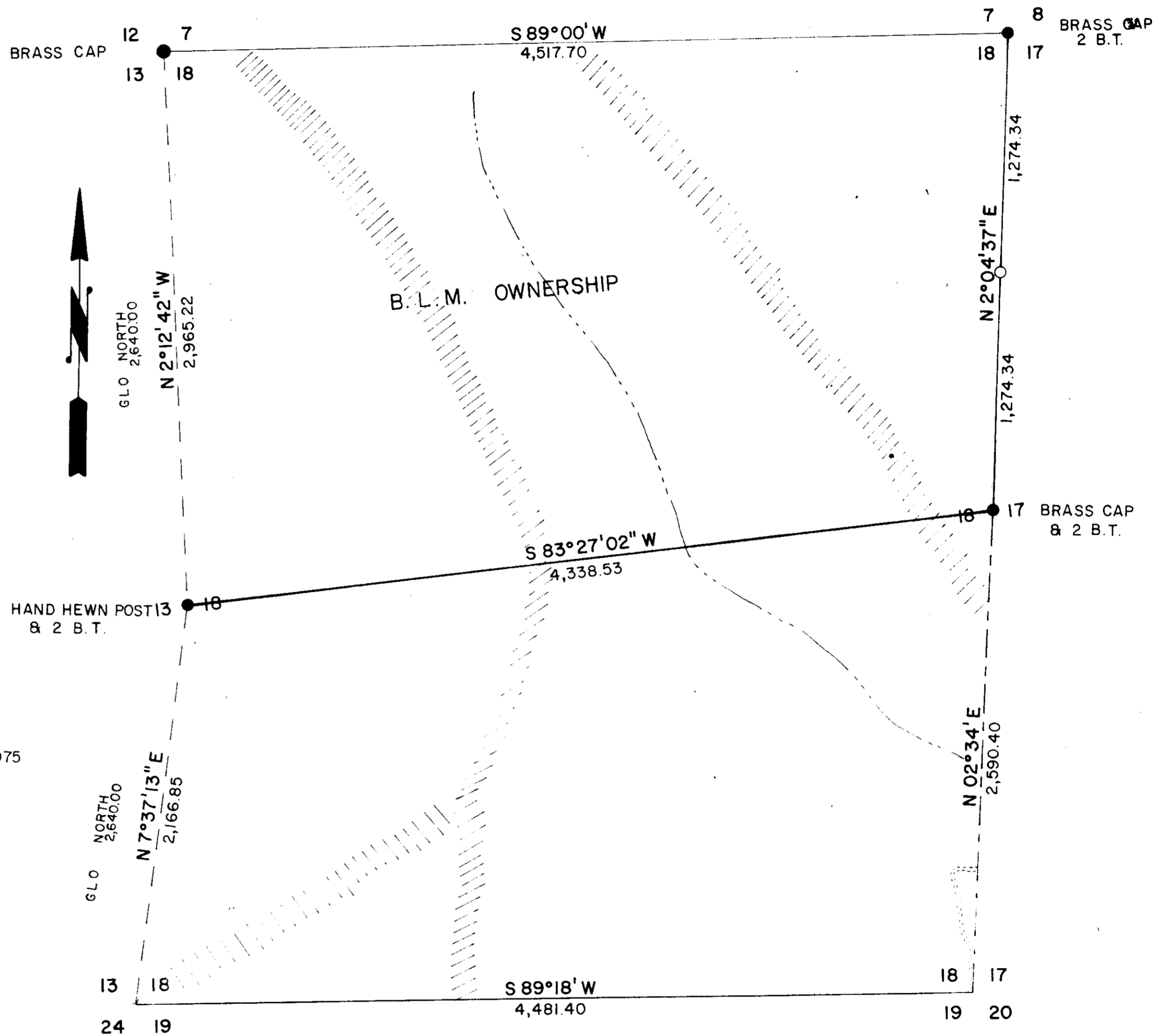


LOCATION POSTER DATA FOR TEMPORARY CORNERS

N 1/16 18/17 36" FIR BEARS S 33° W 7.2 FEET  
 18" ALDER BEARS S 70° E 10.5 FEET

NOTES

1. COORDINATES OF W 1/4 CORNER  
 N 10,577.321  
 E 5,388.431
- COORDINATES OF E 1/4 CORNER  
 N 11,072.162  
 E 9,698.645
2. BEARING OF SURVEY FROM SOLAR OBSERVATION  
 TAKEN NEAR THE W 1/4 CORNER ON FEBRUARY 24, 1975
3. HEAVY LINES WERE POSTED WITH B.L.M. BOUNDARY  
 TAGS EVERY ± 150 FEET



LEGEND:

- DENOTES MONUMENTS FOUND
- DENOTES MONUMENTS SET
- ===== DENOTES ROAD
- DENOTES RIVER
- ////// DENOTES RIDGE
- LINE SURVEYED & POSTED
- LINE SURVEYED
- FROM G.L.O. NOTES 1884
- PROJECTED
- FROM COUNTY NOTES

|   |                   |                    |        |
|---|-------------------|--------------------|--------|
| <b>SURVEY PLAT</b>  |                   |                    |        |
| SECTION 18, T 3 S, R 8 W, W.M.<br>TILLAMOOK COUNTY, OREGON          |                   |                    |        |
| FOR THE BUREAU OF LAND MANAGEMENT<br>SALEM DISTRICT                 |                   |                    |        |
| SURVEYED BY FEDERAL HIGHWAY ADMINISTRATION<br>VANCOUVER, WASHINGTON |                   |                    |        |
| PROJECT ENGR. <u>L.W. BARBER</u>                                    |                   |                    |        |
| DRAWN BY  | LADONNA<br>GARNER | SCALE<br>1" = 500' | 3-5-75 |