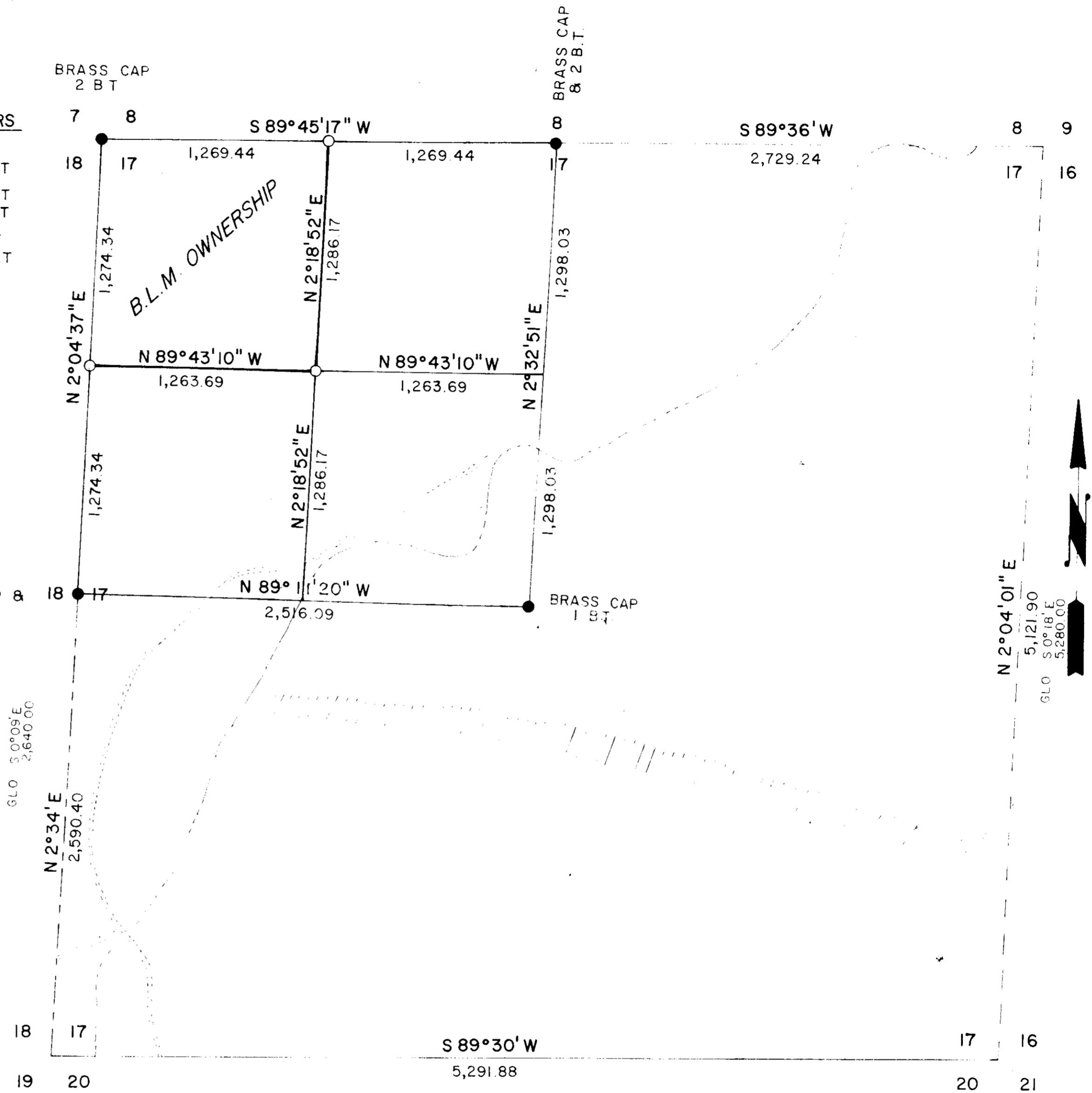


**LOCATION POSTER DATA FOR TEMPORARY CORNERS**

N 1/16 18/17	36" FIR BEARS S 33° W 7.2 FEET 18" ALDER BEARS S 70° E 10.5 FEET
NW 1/16	14" ALDER BEARS N 30° W 12.5 FEET 20" ALDER BEARS S 54° E 21.2 FEET
W 1/16 $\frac{8}{17}$	8" ALDER BEARS S 65° W 6.0 FEET 12" ALDER BEARS S 56° E 15.3 FEET

**NOTES**

- COORDINATES OF W 1/4 CORNER  
N 11,072.162  
E 9,698.645  
COORDINATES OF N 1/4 CORNER  
N 13,630.034  
E 12,329.873
- BEARING OF SURVEY FROM SOLAR OBSERVATION TAKEN NEAR THE W 1/4 CORNER OF SECTION 18 ON FEBRUARY 24, 1975
- HEAVY LINES WERE POSTED WITH B.L.M. BOUNDARY TAGS EVERY ± 150 FEET
- MONUMENTS SET 1" STEEL PIN WITH STEEL FENCE POST & SURVEY PLAQUE



**LEGEND:**

- DENOTES MONUMENTS FOUND
- DENOTES MONUMENTS SET
- ==== DENOTES ROAD
- DENOTES RIVER
- ////// DENOTES RIDGE
- LINE SURVEYED & POSTED
- LINE SURVEYED
- FROM GLO NOTES 1884
- PROJECTED
- FROM COUNTY NOTES

<b>SURVEY PLAT</b>	
SECTION 17 , T 3 S , R 8 W , W.M.	
TILLAMOOK COUNTY, OREGON	
FOR THE BUREAU OF LAND MANAGEMENT SALEM DISTRICT	
SURVEYED BY FEDERAL HIGHWAY ADMINISTRATION VANCOUVER, WASHINGTON	
PROJECT ENGR <u>L.W. BARBER</u>	
DRAWN BY <u>LADONNA GARNER</u>	SCALE 1" = 500'
<b>3-20-75</b>	