

Map of

Nels Nelsons Land

In the West 1/2 of the N.E. 1/4 of Section 17, T.1. N. R. 10. W.

1/4 S. Cor →
on the north
line of Sec. 17.

East → 20.00 chs.

Deed in Book 47 Page 407

4.00 chs

1/16 S. Cor

Hill Land 15.9 Acres

N



South

30.45 Chains

S 22 1/2 W. 5.00
East line of Highway
S 70 1/2 W. 4.00
S 59 W. 4.00

S 75 1/2 W. 6.00 chs

Creek

Bottom Land 45 Acres

S 3 1/4 W. 7.44 chs
East line of Highway
Book R Page 568
2 Acre Tract Excepted

30.45 Chains

1/16 S. Cor

S 14 1/2 W. 8.00 chs

A. M. Austin Surveyor
April 14th 1934

Miami R.

Scale, 1. Inch = 3.00. Chains

MISCELLANEOUS

West 20.00 Chains

F40-287

1 of 2

T. 1. N. 10.

F-40-197

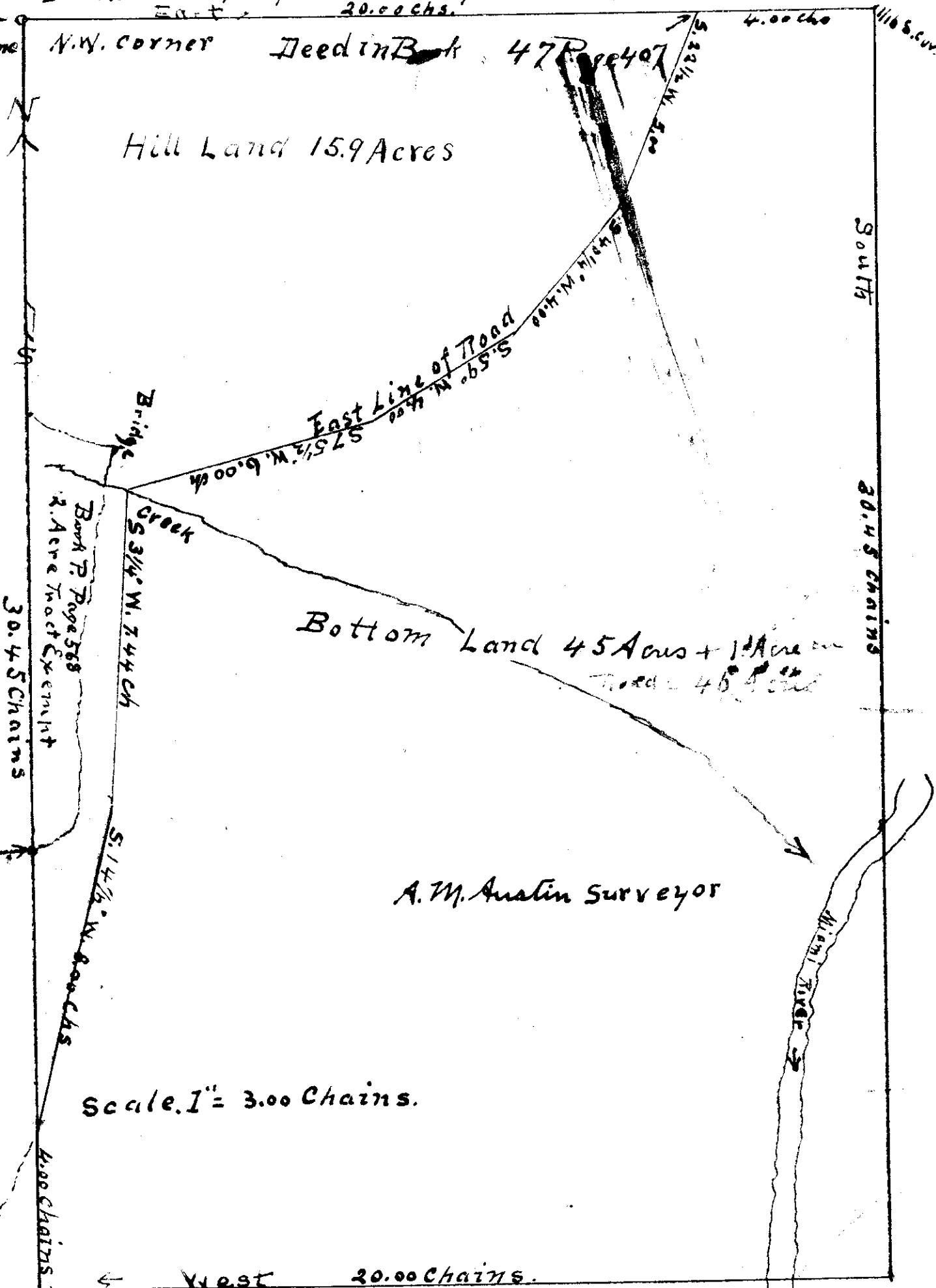
Map
of

Nels Nelsons Land Tract No 14.

In the West 1/2 of the N.E. 1/4 of Sec. 11. Tp. 1. N. R. 10. W.

F-40-280

1/4 S. cor. on the North line of Sec. 11.



Hill Land 15.9 Acres

Bottom Land 45 Acres + 1 Acre
Total = 46 Acres

A.M. Austin Surveyor

Scale 1" = 3.00 Chains.

66 ft = 1 Chain