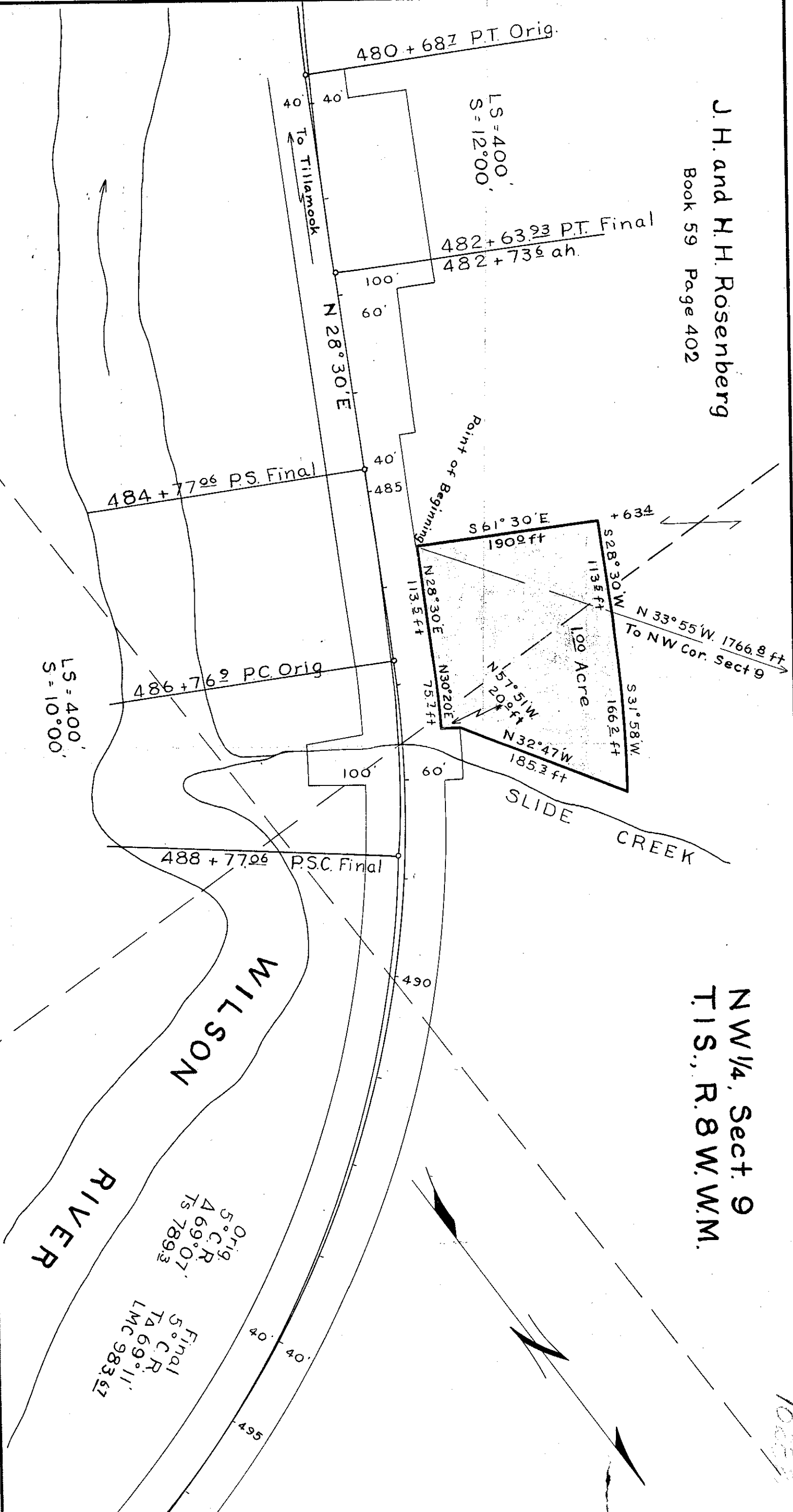


J. H. and H. H. Rosenberg
 Book 59 Page 402

NW 1/4, Sect. 9
 T.1S., R.8W.W.M.



Note:
 Right of Way purchased on original line
 Roadbed constructed on final line

OREGON STATE HIGHWAY DEPARTMENT	
Acquire from	J. H. + H. H. ROSENBERG
For	QUARRY
Highway	WILSON RIVER
County	TILLAMOOK
Scale	1" = 100'
Date	Mar 24-42

1B-25-23

F40-273

1R-2-1282

1025