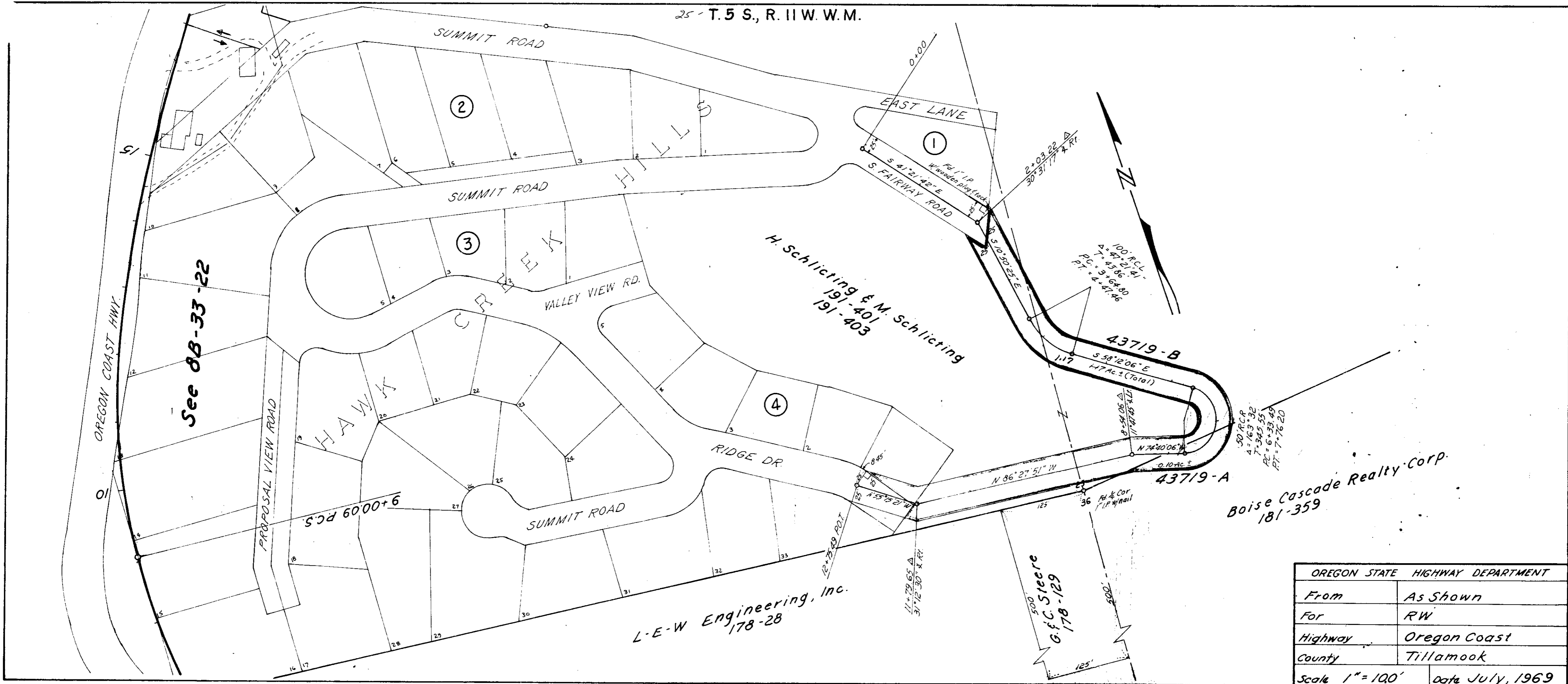


25 - T. 5 S., R. 11 W. W.M.



See 8B-33-22

H. Schlicting & M. Schlicting
191-401
191-403

Boise Cascade Realty Corp.
181-359

L-E-W Engineering, Inc.
178-28

G.C. Steere
178-129

OREGON STATE HIGHWAY DEPARTMENT	
From	As Shown
For	RW
Highway	Oregon Coast
County	Tillamook
Scale 1" = 100'	Date July, 1969

8B-33-22
-F-40-270