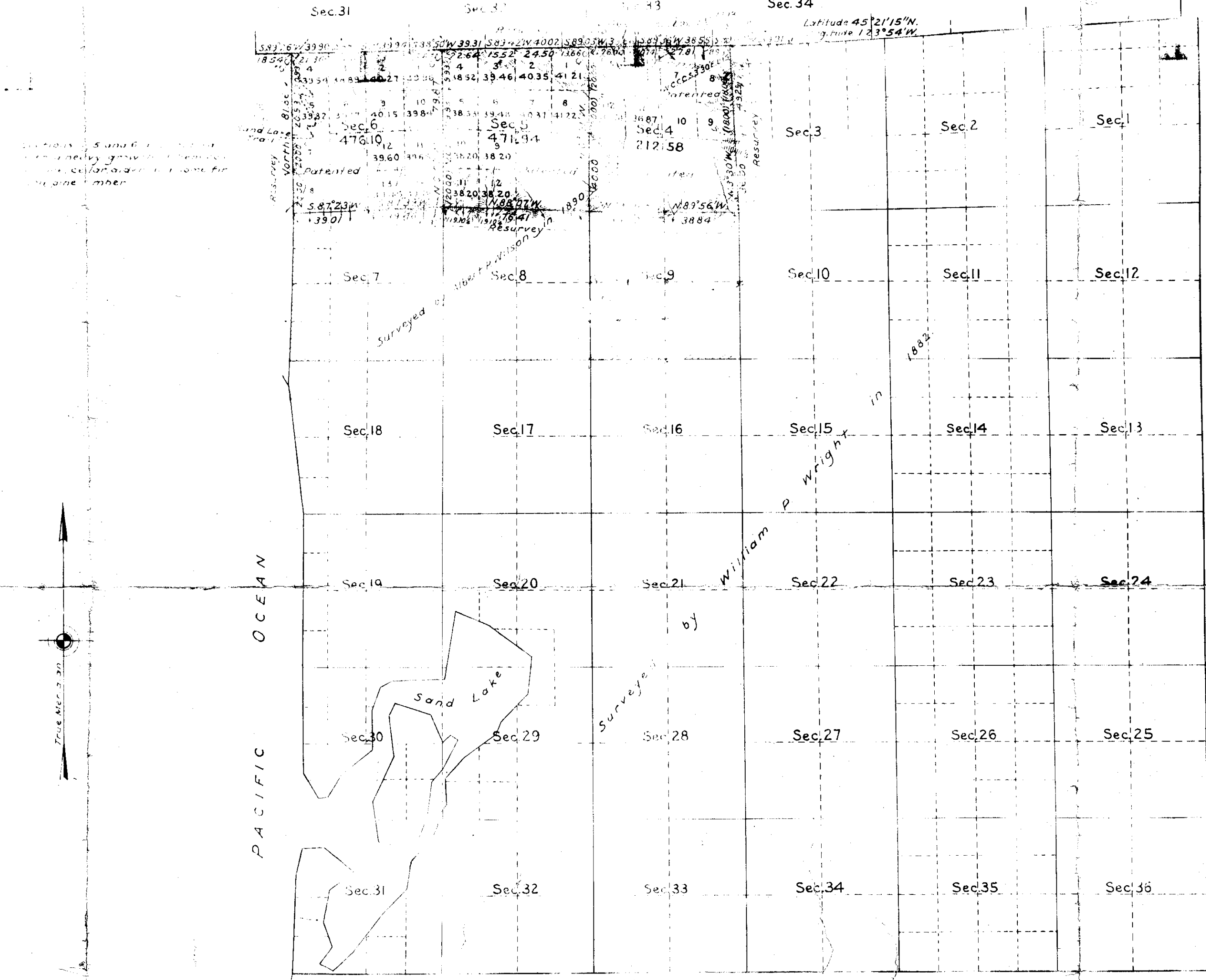


TOWNSHIP No. 3 SOUTH, RANGE No. 10 WEST, OF THE WILLAMETTE MERIDIAN, OREGON.



Mean Magnetic Declination 21° 35' E. Scale: 40 Chains to an Inch. Area Surveyed 11,062 Acres.

LINES DESIGNATED BY	BY WHOM SURVEYED	GROUP No.	DATE	MILEAGE		WHEN SURVEYED	
				MILES	CHAINS	BEGUN	COMPLETED
External	Ernest P. Rands	4	Jan. 10, 1933	39.15	1582	April 18, 1933	May 10, 1933
Subdivisional	Ohis O. Gould	152	Jan. 10, 1933	204	8160	" " " "	" " " "
Miscellaneous				73.20	2928	" " " "	" " " "

Office of U.S. Supervisor of Surveys,  
 Denver, Colorado, Dec. 31, 1934.  
 The above plat of Township No. 3 South, Range No. 10 West, of the Willamette Meridian, Oregon, is correctly conformable to the field notes of the survey thereof which have been examined and approved.

*Walter J. Smith*  
 U.S. SUPERVISOR OF SURVEYS

DEPARTMENT OF THE INTERIOR  
 GENERAL LAND OFFICE  
 Washington, D.C., March 20, 1935.  
 The survey represented by this plat having been correctly executed in accordance with the requirements of law and the regulations of this office, is hereby accepted.

*Arthur H. Smith*  
 ASSISTANT COMMISSIONER