

I.W.E. Anderson County Surveyor of Tillamook Ore do hereby certify that this map was made from notes taken during an actual survey made by me in July 1933, and that it correctly represents the Location of Streams and proposed pipe lines.

M.F. Murphy  
 Jennie Collins  
 DAM SITE  
 ELE 247'

27 26  
 34 35

W. J. Stephens  
 Tillamook Co.

Tillamook Co.

ADD  
 C  
 I  
 F  
 I  
 SA EIGHT ST  
 C  
 OCEAN ST  
 A  
 PACIFIC ST  
 P  
 MAINE ST  
 TRADE ST

NINTH ST



WOODLANDS BLD.

Tillamook Co

31CL  
 88700  
 955.9  
 1100'

51CR  
 426.24  
 452.8'

PATTERSON CREEK  
 N22°04' E 1055.4

PROPOSED 6" PIPE LINE  
 N56°04' E 970.74'

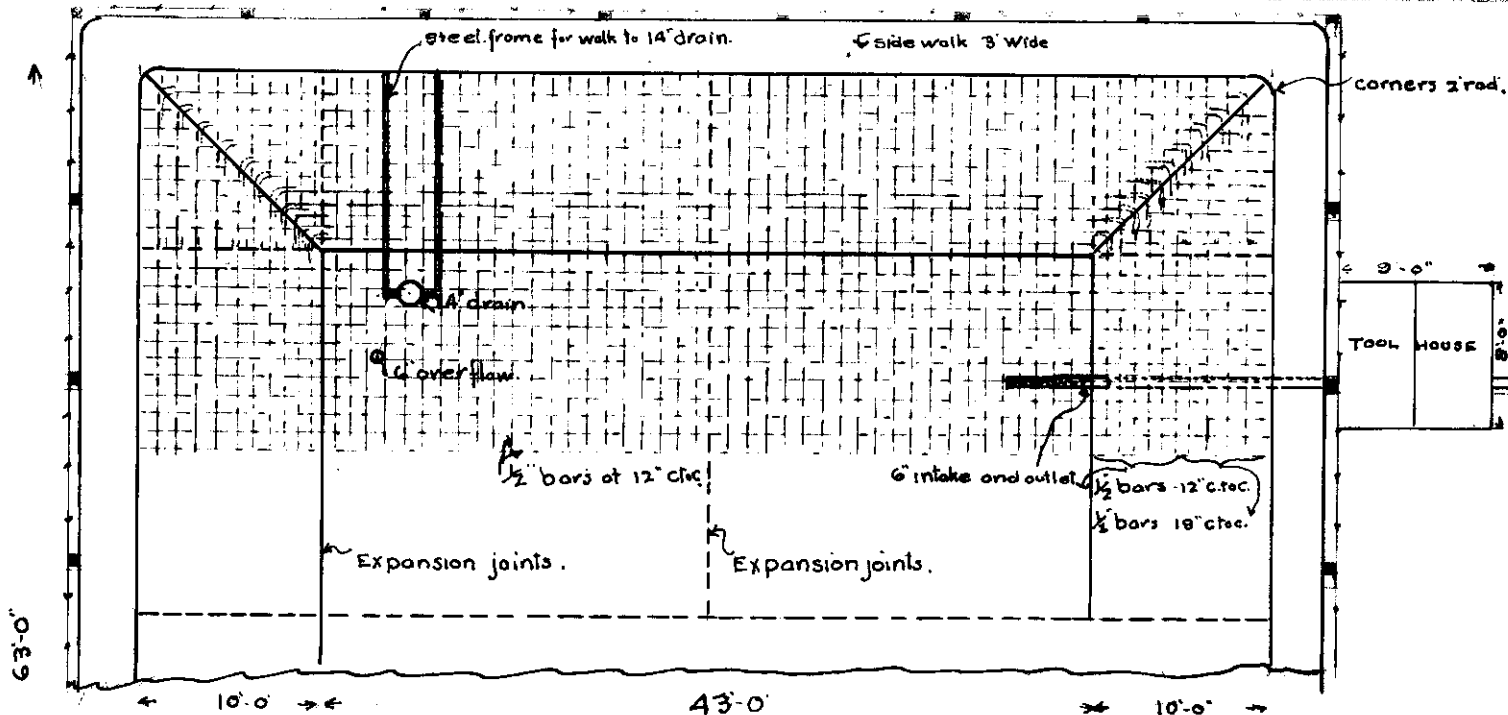
N49°30' E 1031.6'



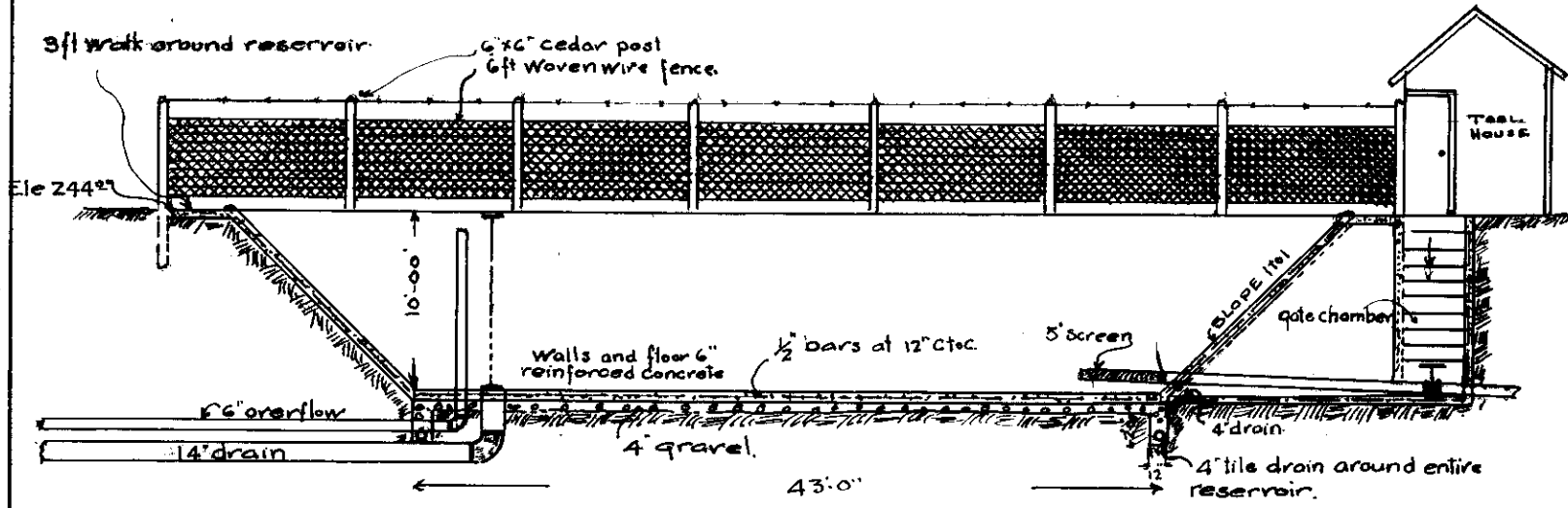
**MAP**  
 SHOWING  
**PROPOSED WATER SYSTEM**  
**FROM DAM TO CITY LIMITS**  
 SECTIONS 26-34-35 T1N R10 W W M  
 BAY CITY TILLAMOOK ORE  
 SCALE 1" = 500'

F-40-231

COUNTY SURVEYOR  
 W. E. Anderson



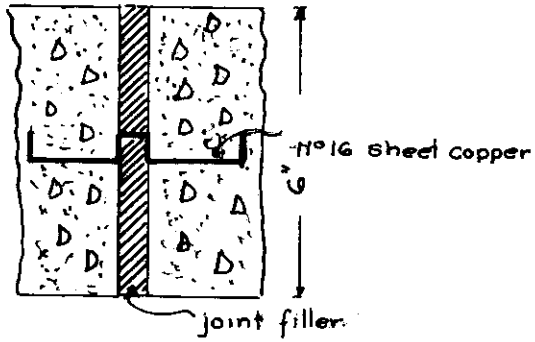
HALF PLAN



SIDE ELEVATION

SCALE 3/32" = one ft.

2" 1/2" 2"



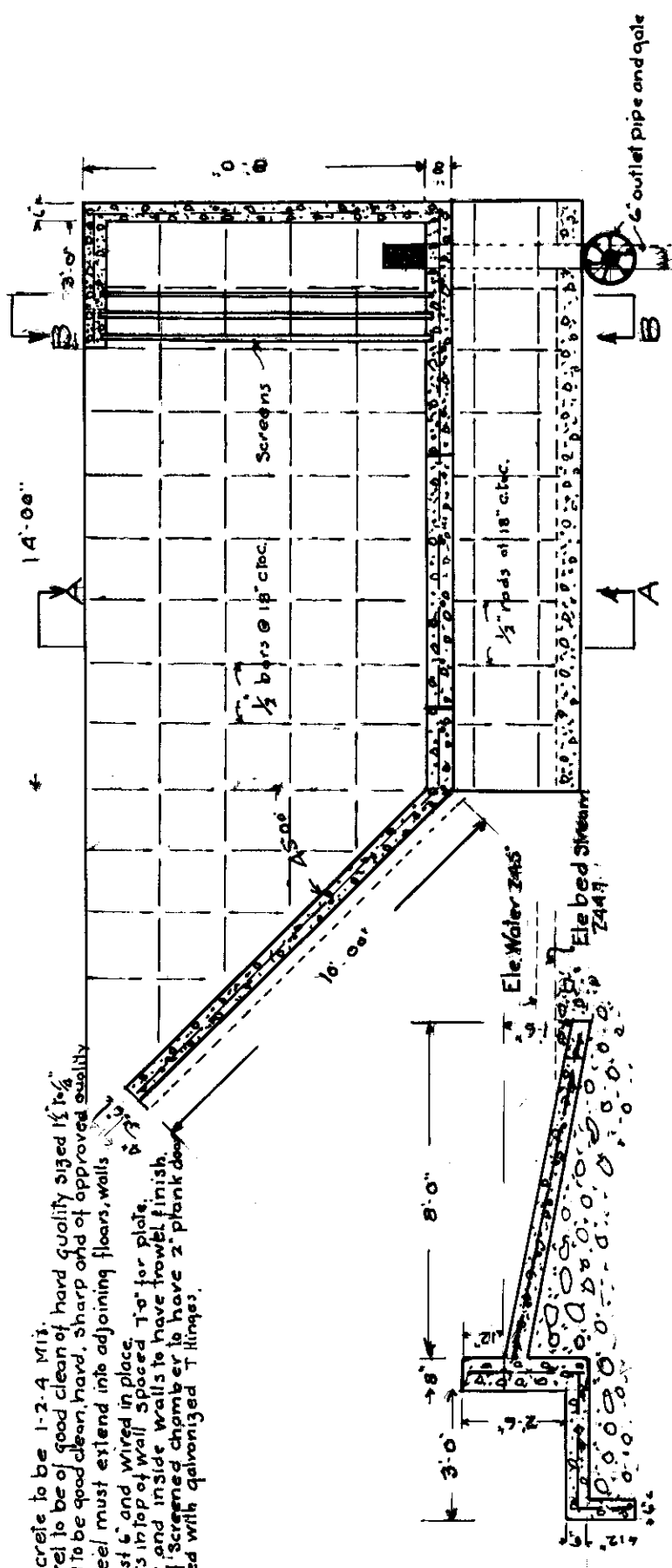
SCALE 1" = 2'

DETAIL OF EXPANSION JOINT

200,000 GALLON RESERVOIR FOR BAY CITY WATER DEPT.

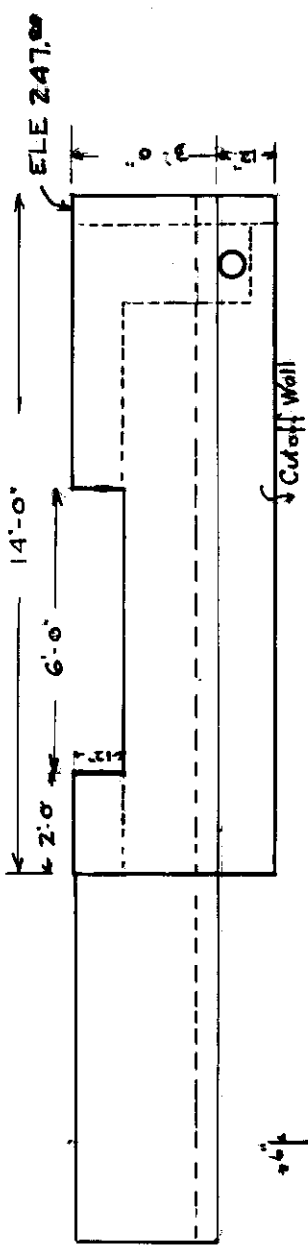
COUNTY SURVEYOR  
W.E. Anderson.

Concrete to be 1-2-4 Mix.  
 Gravel to be of good clean of hard quality sized  $1\frac{1}{2}$ " to  $\frac{3}{4}$ "  
 Sand to be good clean, hard, sharp and of approved quality  
 All steel must extend into adjoining floors, walls  
 at least 6" and wired in place.  
 4 bolts in top of wall spaced 1' for plates.  
 Floor and inside walls to have trowel finish  
 Top of screened chamber to have 2" plank deck  
 hinged with galvanized T hinges.



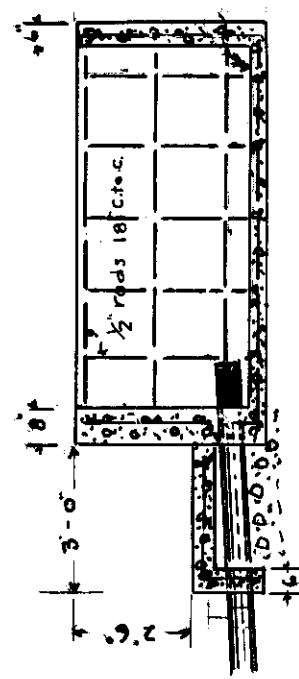
END ELE "A-A"

PLAN DIVERSION DAM



DOWN STREAM ELE

Elev Chamber floor 243.5



END ELE "B-B"

DIVERSION DAM  
 FOR  
 BAY CITY WATER WORKS

SCALE:  $\frac{1}{4}$ " = 1 FT COUNTY SURVEYOR.  
*W. E. Anderson*