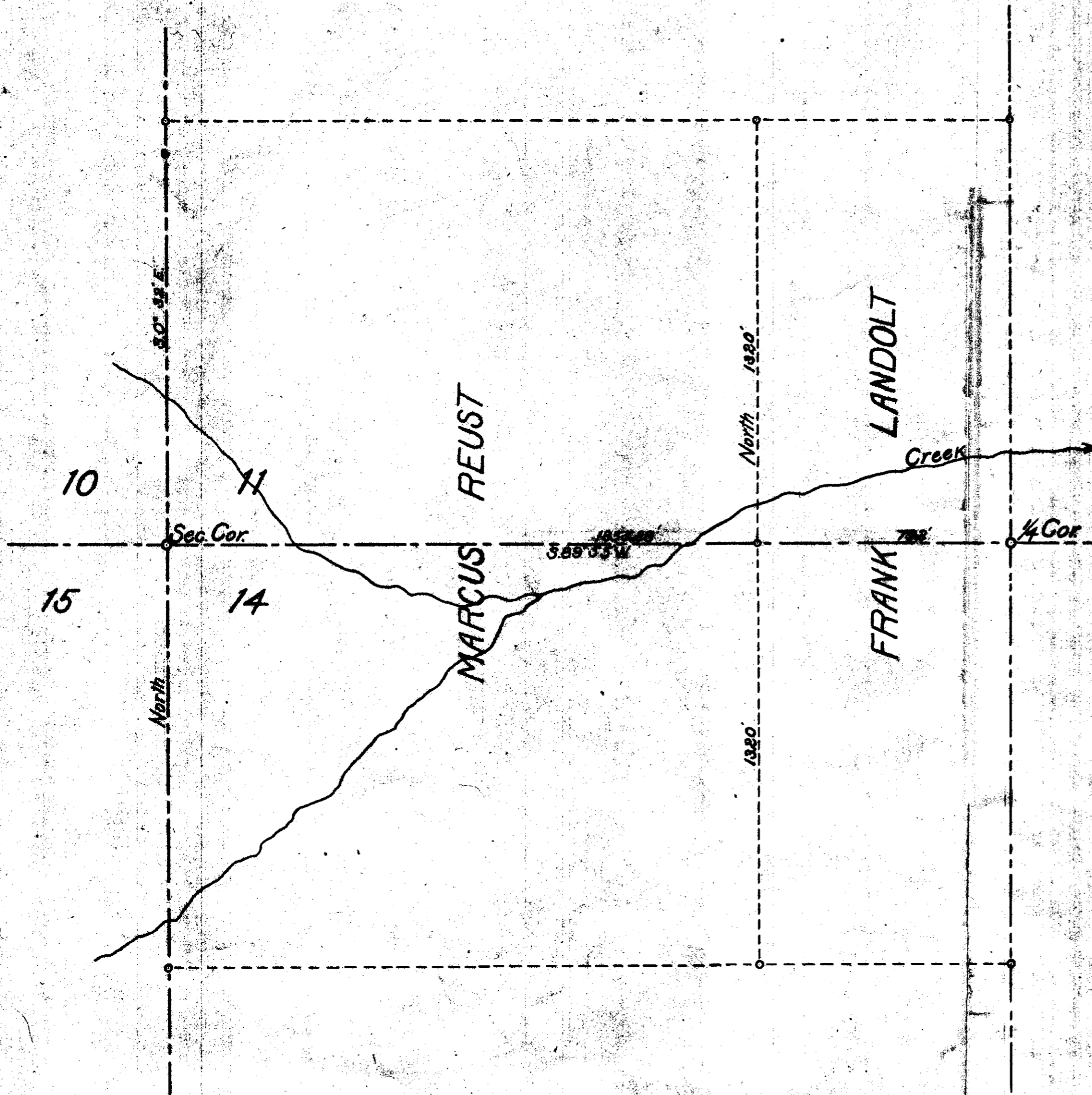


MAP OF SURVEY

FOR
 MARCUS REUST FRANK LANDOLT
 OF
 Sec. 11 & 14 T.2 S. R.10 W. W.M.
 Tillamook Co.

R.L. Shreve C.S.
 SHREVE & DUNN Engrs.



DESCRIPTION OF FRANK LANDOLT TRACT OF LAND

Beginning at 1/4 Cor. between Sections 11 and 14 T.2 S. R.10 W. W.M.
 Thence North 1320 ft.
 " S.89° 55' W. 792 ft.
 " South 2640 ft. Which line is the dividing line between
 Marcus Reust and Frank Landolt.
 Thence N.89° 55' E. 792 ft.
 " North 1320 ft. to point of beginning.
 Said tract containing 48 acres more or less.

DESCRIPTION OF MARCUS REUST TRACT OF LAND

Beginning at Cor. common to Sec. 10, 11, 14 and 15 T.2 S. R.10 W.
 Thence N.0° 32' W. 1320 ft.
 " N.89° 55' E. 1867.57 ft.
 " South 2640 ft. Which line is the dividing line between
 Marcus Reust and Frank Landolt.
 Thence S.89° 55' W. 1855.28 ft.
 " North 1320 ft. to point of beginning.
 Said tract containing 112 acres more or less.

See shreve's notes & DT
 Book "P-14" @ P.67
 9.10 '67