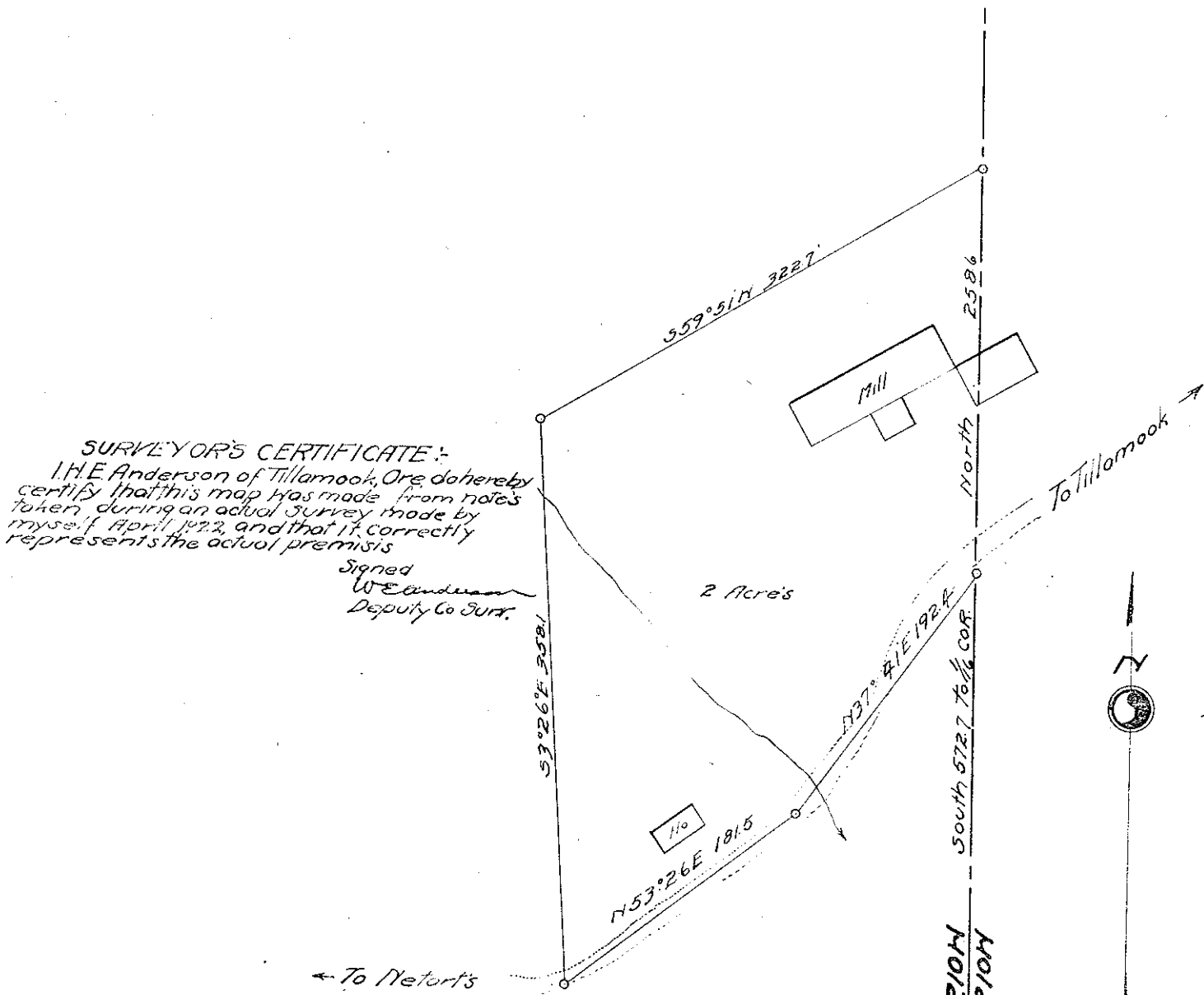


SURVEYOR'S CERTIFICATE:
 I, H.E. Anderson of Tillamook, Ore. do hereby
 certify that this map was made from notes
 taken during an actual survey made by
 myself April 1922, and that it correctly
 represents the actual premises

Signed
W.E. Anderson
 Deputy Co. Surv.



MAP
 SHOWING MILL SITE
 OF
SPRUCE MILL Co.
 Located in Sec 4, T. 2. S., R. 10 W., H. H. M.
 Scale 1"=100' May 1922
 H.E. Anderson
 Deputy Co. Surv.

SEC. 4. T. 2. S. R. 10 W.
 SEC. 3. T. 2. S. R. 10 W.

1/4 COR.