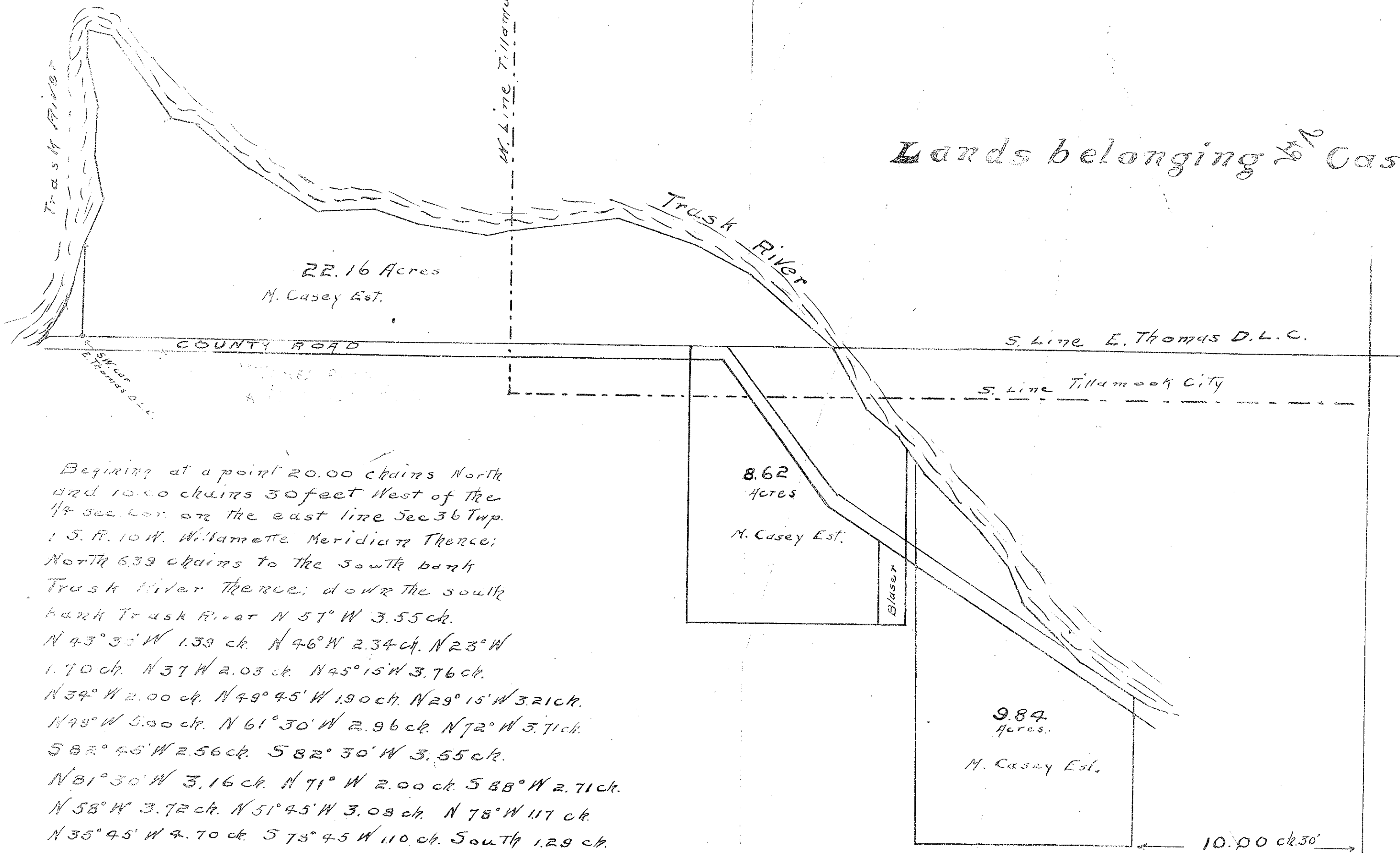


Lands belonging to Casey Est



Beginning at a point 20.00 chains North and 10.00 chains 30 feet West of the 1/4 sec. cor. on the east line Sec 36 Twp. 1 S. R. 10 W. Willamette Meridian Thence; North 6.33 chains to the south bank Trask River thence; down the south bank Trask River N 57° W 3.55 ch. N 43° 35' W 1.39 ch. N 46° W 2.34 ch. N 23° W 1.70 ch. N 37° W 2.03 ch. N 45° 15' W 3.76 ch. N 34° W 2.00 ch. N 49° 45' W 1.90 ch. N 29° 15' W 3.21 ch. N 49° W 5.00 ch. N 61° 30' W 2.96 ch. N 72° W 3.71 ch. S 82° 45' W 2.56 ch. S 82° 30' W 3.55 ch. N 81° 30' W 3.16 ch. N 71° W 2.00 ch. S 88° W 2.71 ch. N 58° W 3.72 ch. N 51° 45' W 3.08 ch. N 78° W 1.17 ch. N 35° 45' W 4.70 ch. S 78° 45' W 1.10 ch. South 1.29 ch. S 15° E 2.29 ch. S 4° W 2.16 ch. S 14° 15' E 2.00 ch. S 23° 30' W 1.52 ch. South 3.44 ch. Thence; East along north line Co. Road 27.67 chains thence; South 12.90 chains thence; East 10.00 chains and 30 feet thence; South 11.02 chains thence East 10.00 chains to the point of beginning

This is to certify that the above notes were made from an actual survey, of land shown on above plat, on February 13th to 22nd and is correct.

F. L. Saffington Dep. Co. Surveyor