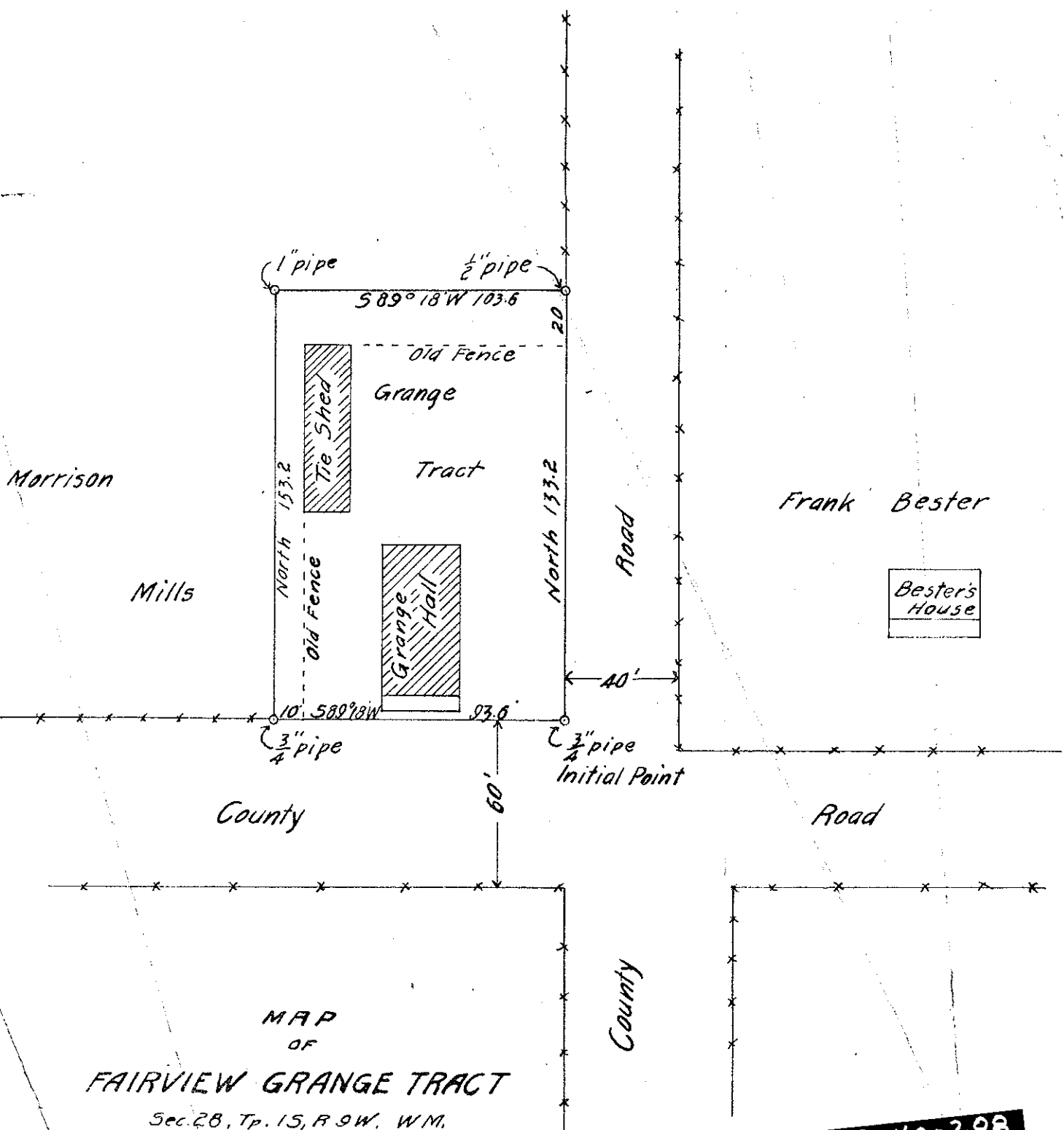


(See Shreve's Notes  
 Book P-15, Pages 75-76  
 for field notes)



MAP  
 OF  
**FAIRVIEW GRANGE TRACT**  
 Sec. 28, Tp. 15, R. 9W. W.M.  
 R. L. Shreve Co. Surv. June, 1916  
 Scale  $1'' = 50'$

Note - The initial point is  $637.9'$  North and  $2614.7'$  West of the  $\frac{1}{4}$  corner between Secs. 27 & 28, Tp. 15, R. 9W. W.M.

**F-40-208**  
 F40-208