

Proposed Light Station  
at  
**CAPE MEARES, OR.**

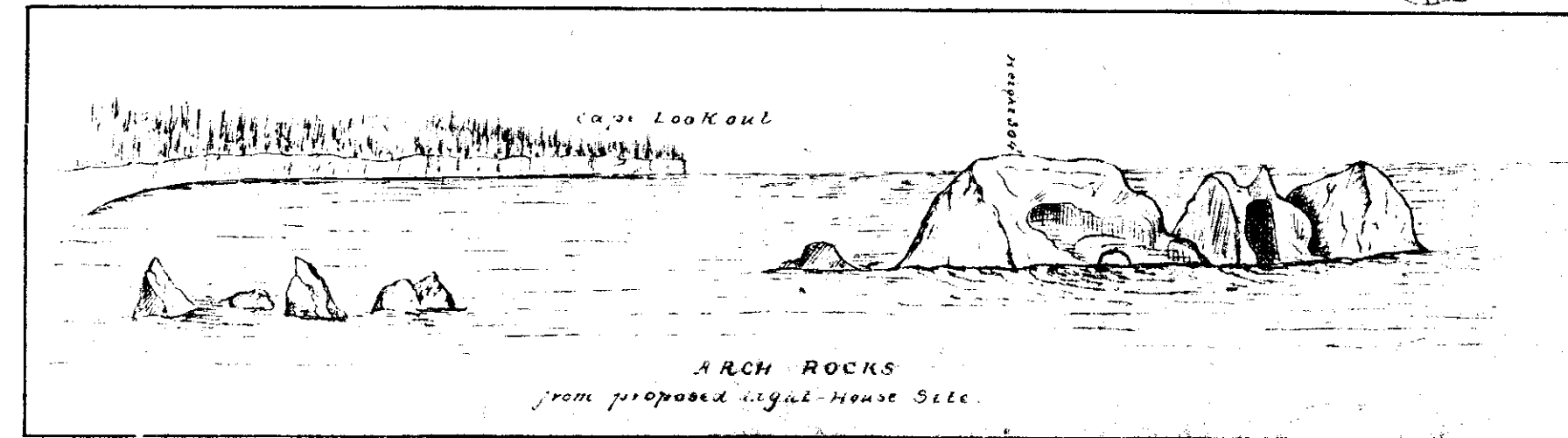
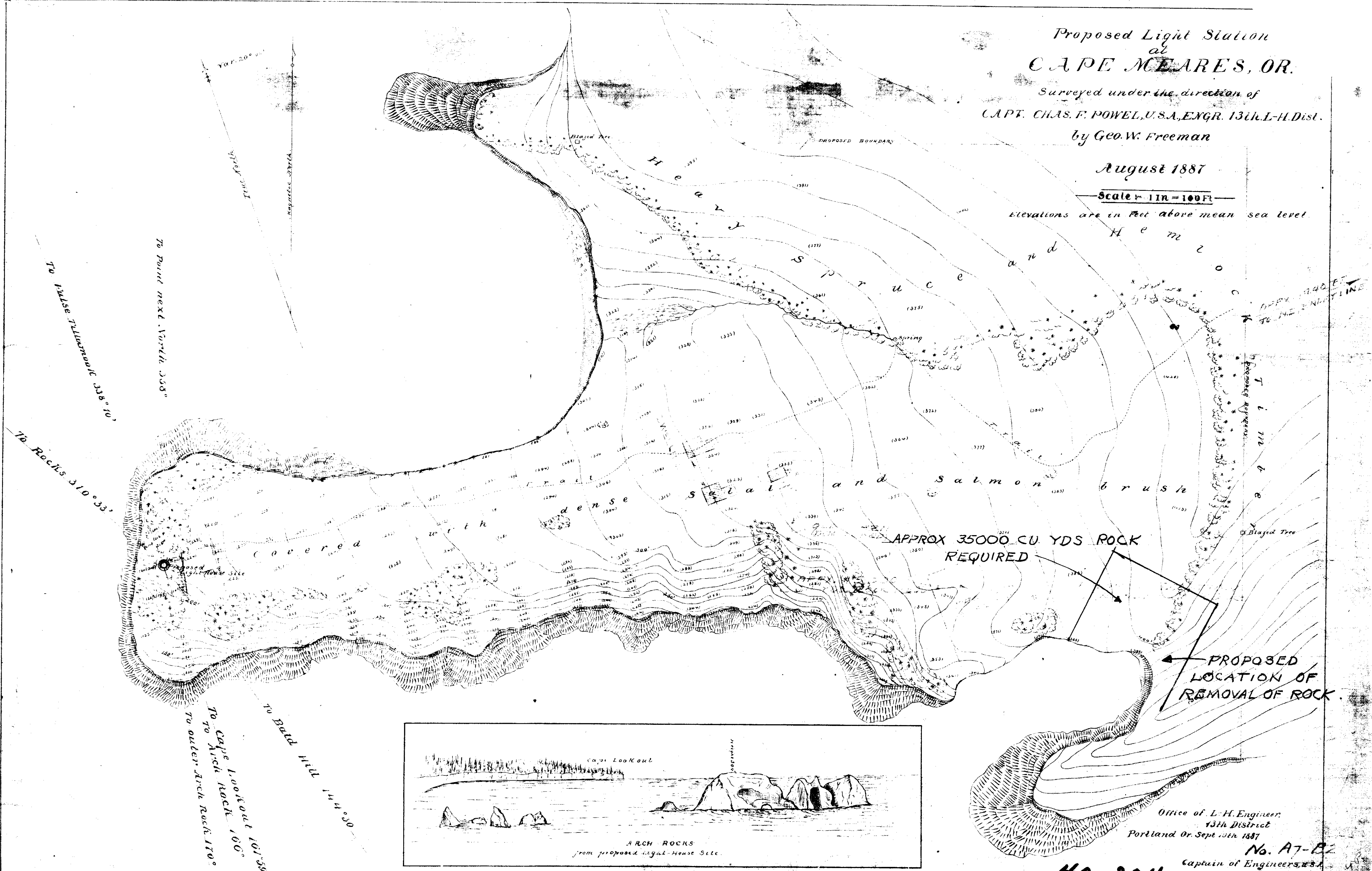
Surveyed under the direction of  
CAPT. CHAS. F. POWEL, U.S.A., ENGR. 13th L-H Dist.

by Geo. W. Freeman

August 1887

Scale = 1 in = 100 ft

Elevations are in feet above mean sea level.



Office of L-H. Engineer,  
13th District  
Portland Or. Sept. 15th 1887

No. A7-B  
Captain of Engineers, U.S.A.  
Engr 13th L-H Dist.

40-204

CM 7

100

100