

TOWNSHIP 1 SOUTH, RANGE 9 WEST, OF THE WILLAMETTE MERIDIAN, OREGON.

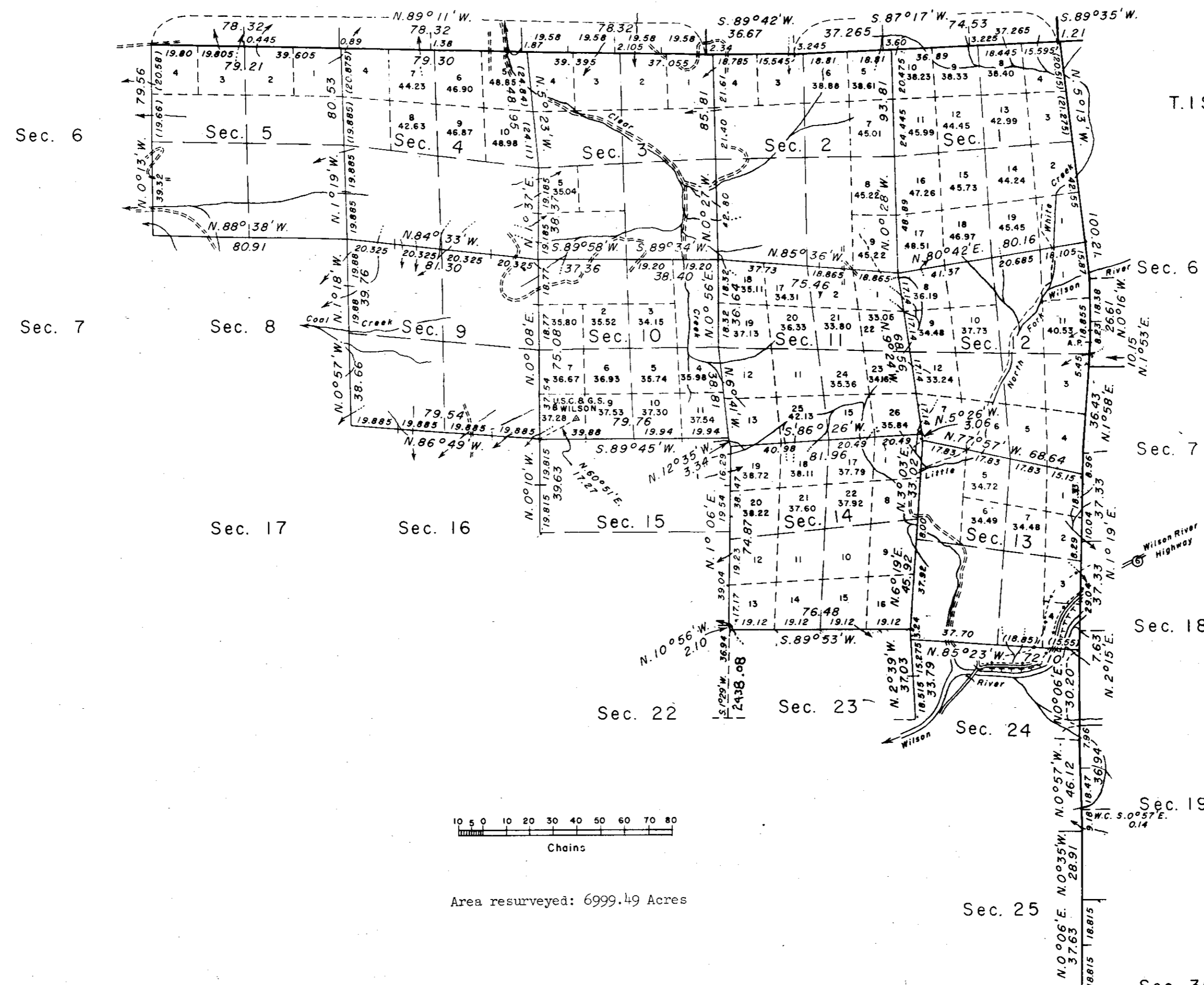
DEPENDENT RESURVEY

T. 1 N., R. 9 W.

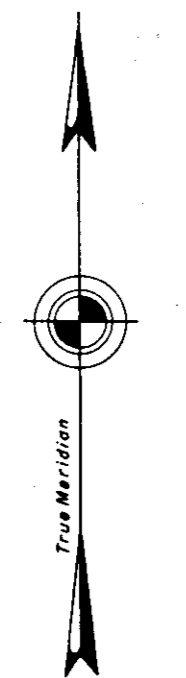
T. 1 N., R. 8 W.

Sec. 31 Sec. 32 Sec. 33 Sec. 34 Sec. 35 Sec. 36 Sec. 31

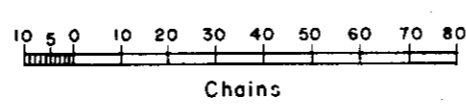
WILLAMETTE BASE LINE



T. 1 S., R. 8 W.



Mean magnetic declination
20°58' East



Area resurveyed: 6999.49 Acres

This plat represents a retracement and reestablishment of a portion of the Willamette Base Line through Range 9 West, a portion of the west boundary of T. 1 S., R. 8 W., and a portion of the subdivisional lines of T. 1 S., R. 9 W., Willamette Meridian, Oregon, designed to restore the corners in their true original location according to the best available evidence, and excepting as new or modified vacant subdivisions are shown hereon, the lottings and areas are as shown on the plats approved December 31, 1884 and September 24, 1895.

The history of previous surveys is set forth in the field note record.

The dependent resurveys were executed by Lynn M. Roseberry, beginning June 3, 1958 and completed September 14, 1960, pursuant to special instructions for Group No. 394, Oregon, dated March 14, 1958.

Timber in this area consists of spruce, hemlock, alder, fir and cedar.

Sec. 30
Latitude 45°27.0' N.
Longitude 123°43.3' W.

UNITED STATES DEPARTMENT OF THE INTERIOR
BUREAU OF LAND MANAGEMENT
Washington, D.C. April 15, 1963

This plat is strictly conformable to the approved field notes, and the survey, having been correctly executed in accordance with the requirements of law and the regulations of this Bureau, is hereby accepted.

For the Director

Chief, Division of Engineering

F-40-191