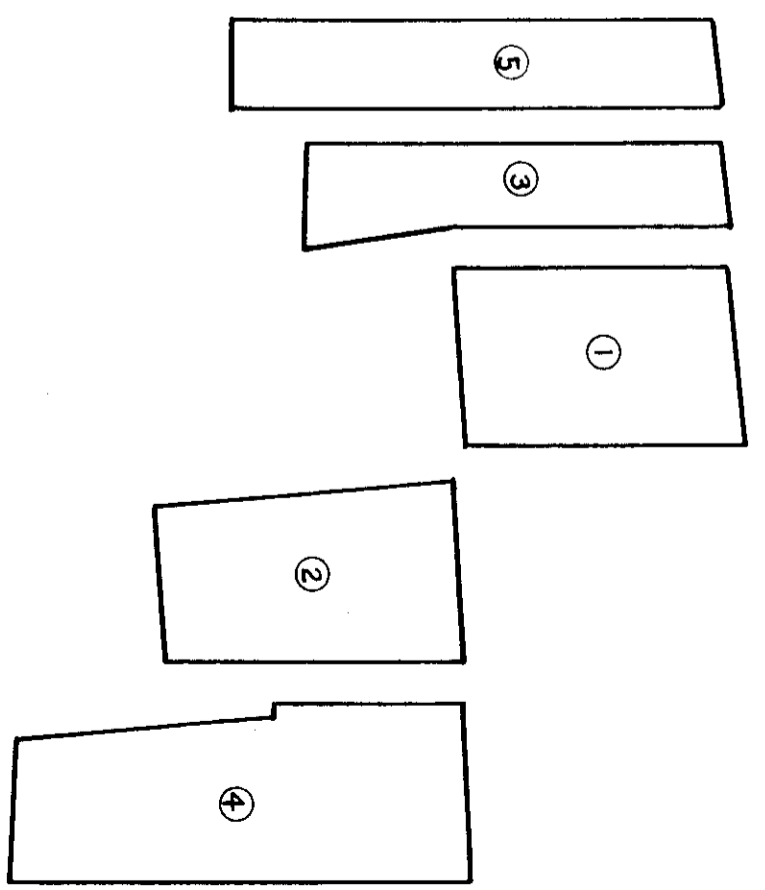
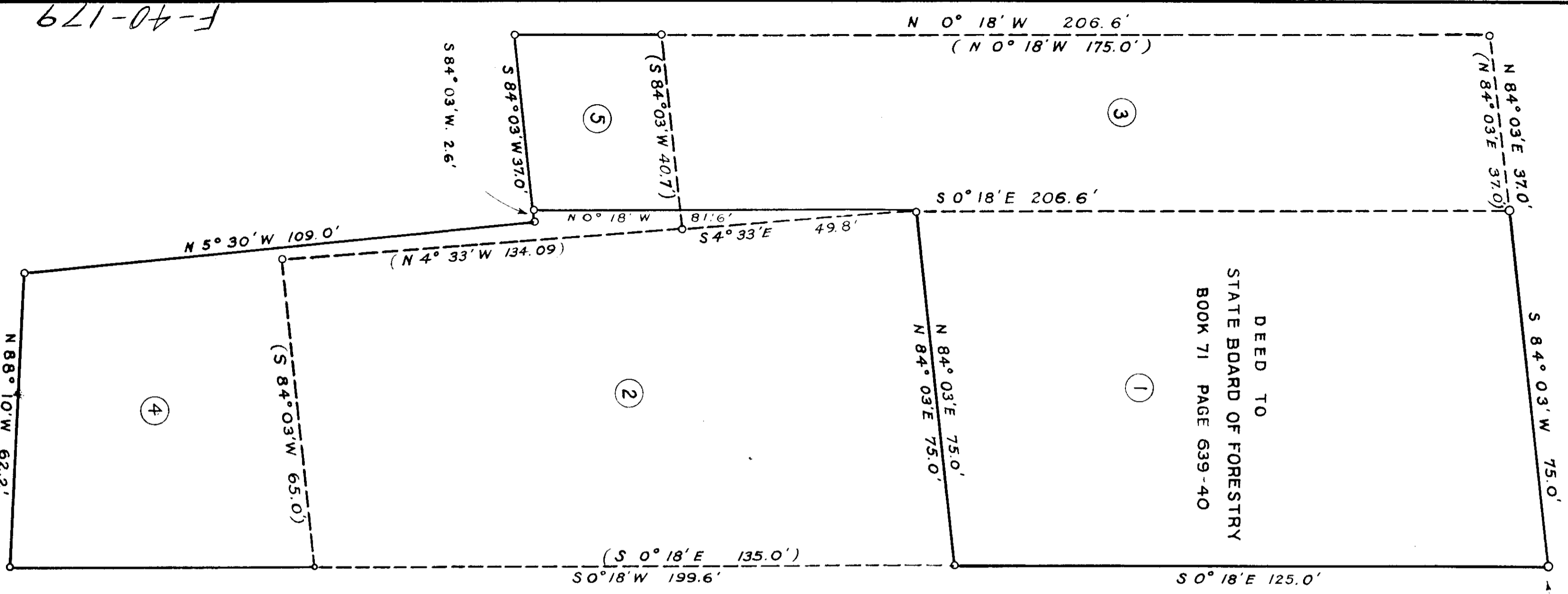


3.45 CHAINS WEST OF THE EAST LINE
OF THE J. S. TRIPP D.L.C.

DEED TO
STATE BOARD OF FORESTRY
BOOK 71 PAGE 639-40



TILLAMOOK HDQTRS. SITE

SEC. 29 T 1 S R 9 W.W.M.
SCALE 1" = 20'

F-40-179

F-40-179
3.25.59 N AVES