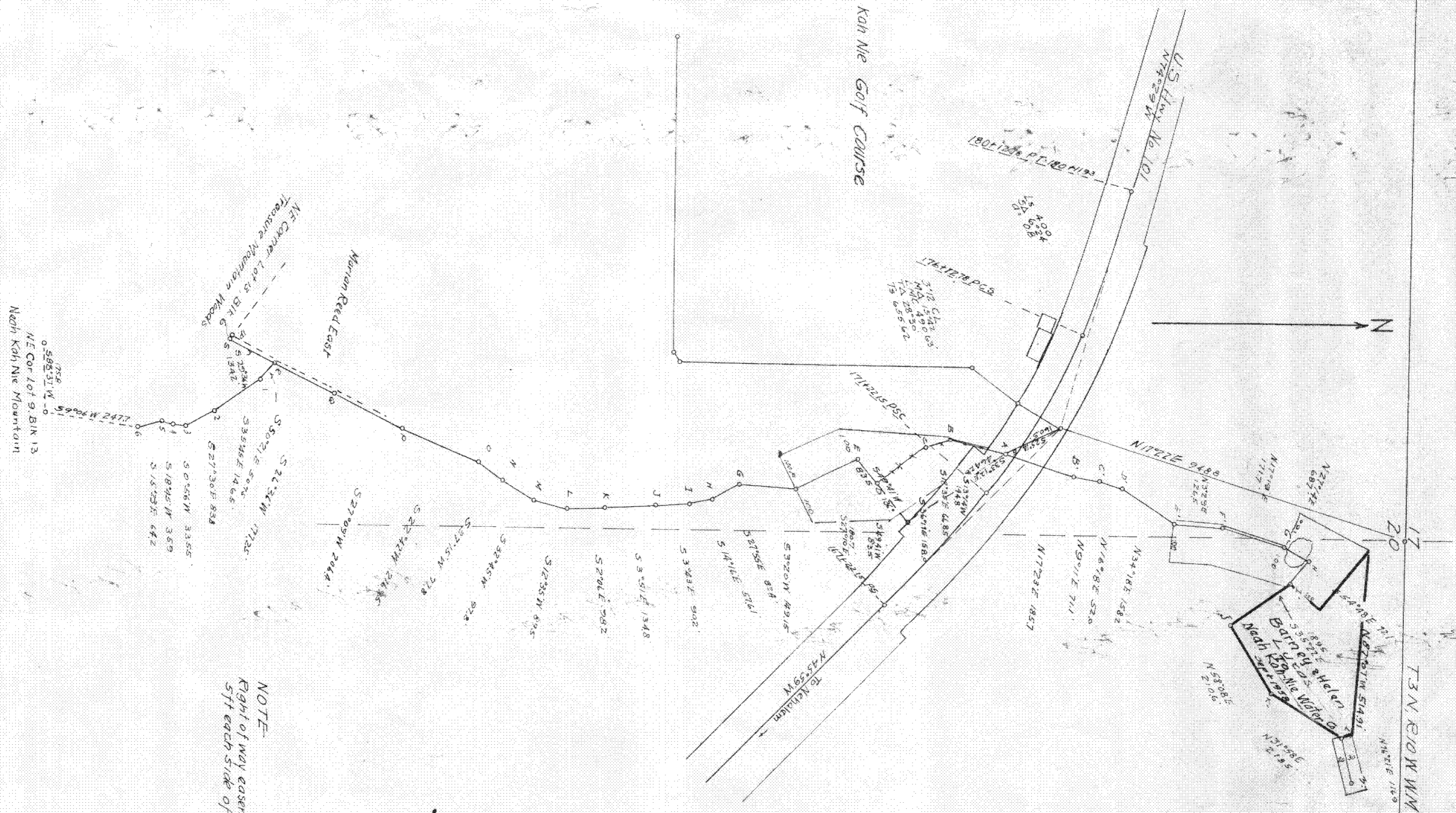




Map of the 00730 Area



NOTE  
 Right of way easement is 10 feet wide, being  
 5 ft each side of center line unless otherwise shown

MAP SHOWING ADDITIONAL TRACT  
 SOLD BY  
 BAENEY & HELEN LUCAS  
 TO  
 NEAH KAH NIE WATER Co

September 1958  
 J.H. Scott  
 Registered Professional Engineer 294

*print*

MAP SHOWING  
 LOCATION OF WATER MAINS  
 AND WATER SUPPLY PIPE LINES  
 IN SECTION 20, TWP 3 NORTH, R10 W WM  
 FOR RIGHT OF WAY EASEMENTS IN  
 UNPLATTED AREAS IN NEAH KAH NIE AREA  
 Scale 1" = 200'  
 March 1954

J.H. Scott  
 Registered Professional Engineer No. 294

Revised June 1st 1954 BK 145 - Pg. 32007