

PACIFIC OCEAN

CHURCHILL PROPERTY

Section 20, T3N, R10W

SCALE 1" = 20'

NW 1/4 34 1/4

I, W.A. Markham, Reg. Engr. No. 1842, certify that this map shows facts as determined by actual survey made by me Nov. 13-14, 1956.

- 1) The house, garage, tree, are located as shown.
- 2) The South line of the property, as defined by Churchill deed B 25 p 323, as being 10' parallel to south line of house, coincides with north line of Scott deed B 48 p 260, as determined from Initial Point of Neah Kah Nie Pirates Beach, and angle 88°12' to left turned from projection of East line of Neah Kah Nie Pirates Beach.
- 3) The North line of the property, by B 25 p 323 to be 50' from and parallel to South line as determined from South line of house, coincides with North line of fence posts as now in place.
- 4) The Creek, which by B 25 p 323 is East line of the property, is presently located as shown; no way to determine if location formerly was different.

W.A. Markham



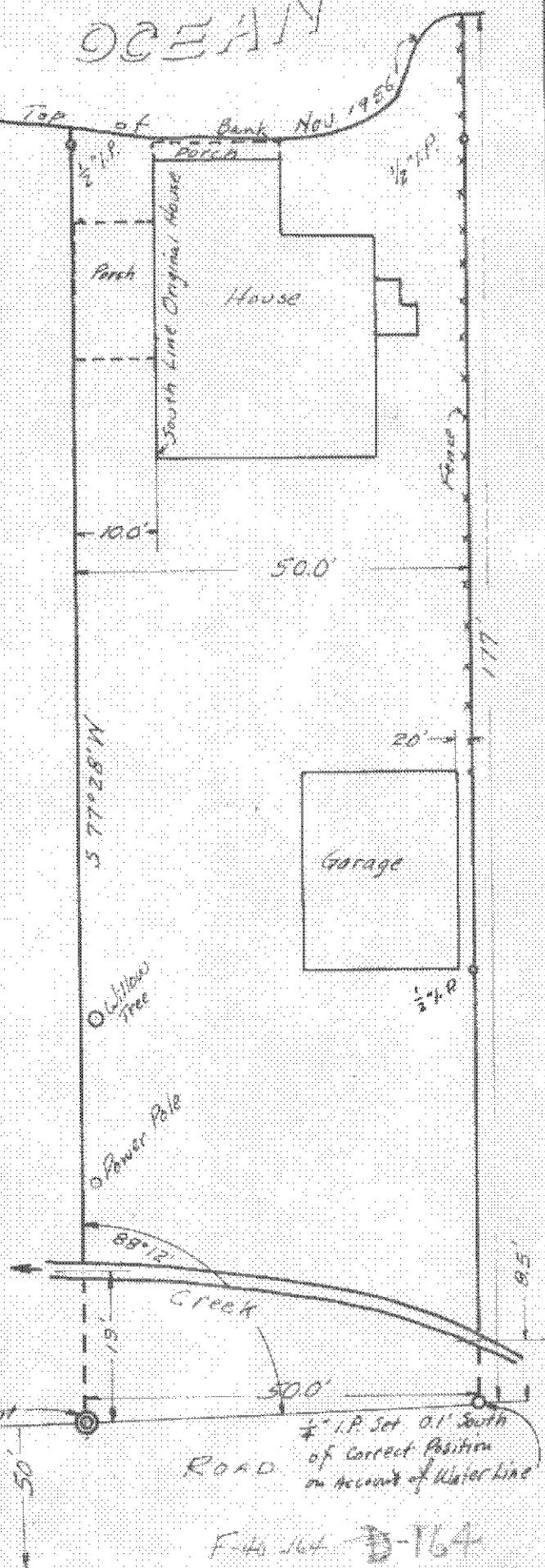
F-40-164

NEAH KAH NIE PIRATES BEACH

NE Corner Lot 7 Block 1

Initial Point

BEULAH REED COUNTY



F-40-164