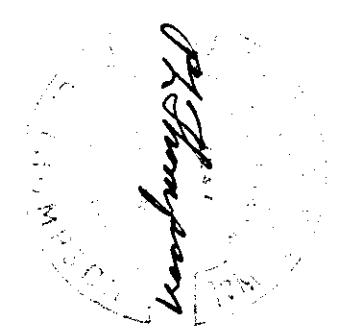


Subdivision of
Section 32, 2N, R10W
Section 5, T1N, R10W
for
Publishers Paper Co.

Scale 1" = 400'
Bearings from Observation
on Polaris at Elongation
1952



2928 Found
Set 4 5/16" ANK
130'E 32'E
From 532 BT
N 48° W 22'E
From 533 BT
Scriber 5" H
528' E N 89° W
45

2929 Found
1/4 S.
Steel ANK
Original Cedar BT
N 45° E 20.5' Scribe
Marks Visible

2930 Found
1/4 S.
Steel ANK
Original Cedar BT
N 45° E 20.5' Scribe
Marks Visible

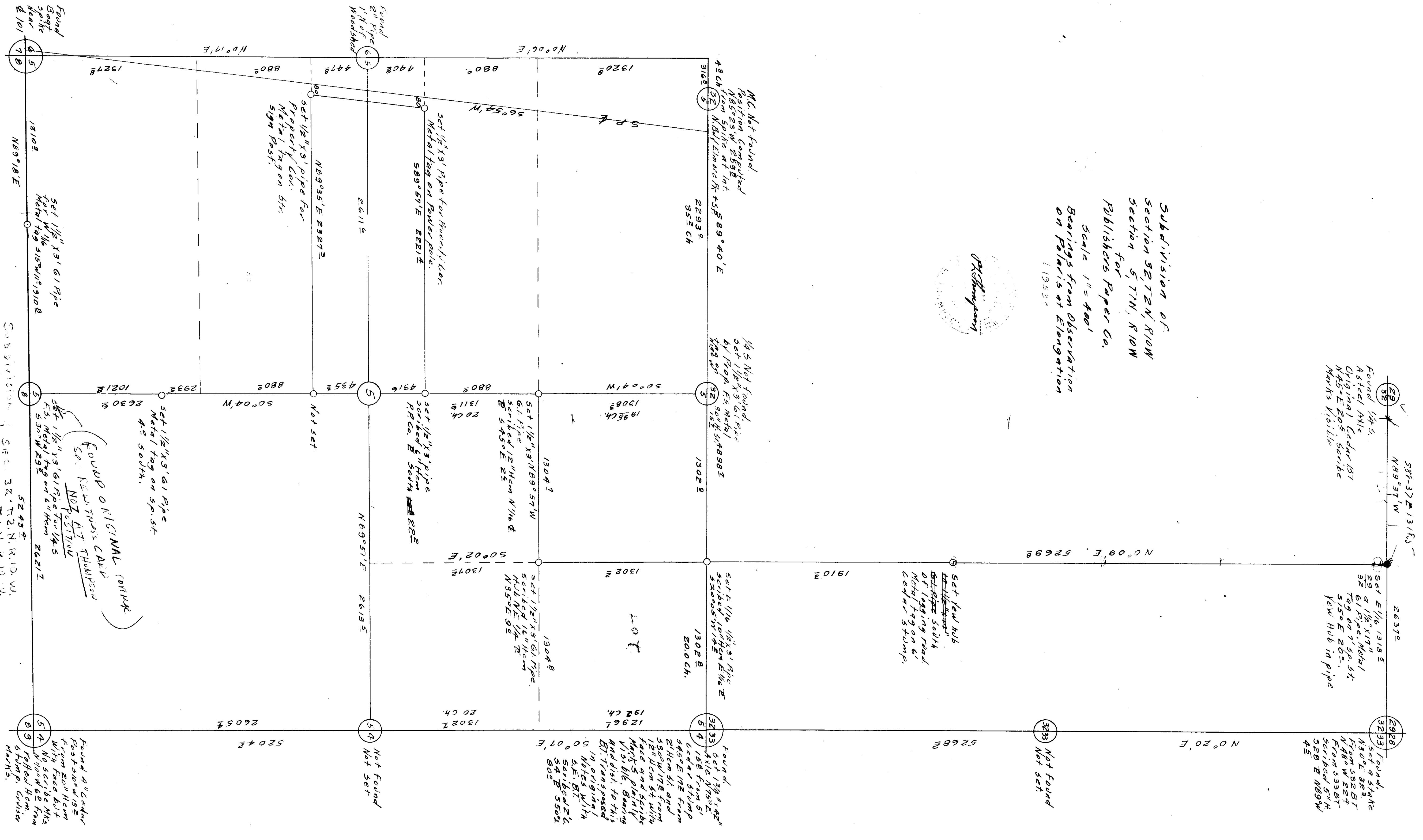
2928 Found
Set 1/16" 1318 S
32 9 1/2" X 1 1/2"
9 1/2" Pipe Metal
Tag on 7' Sp. St.
5150' E 26.5'
New Hub in pipe

2929 Found
Set 1/16" 1318 S
32 9 1/2" X 1 1/2"
9 1/2" Pipe Metal
Tag on 7' Sp. St.
5150' E 26.5'
New Hub in pipe

2930 Found
Set 1/16" 1318 S
32 9 1/2" X 1 1/2"
9 1/2" Pipe Metal
Tag on 7' Sp. St.
5150' E 26.5'
New Hub in pipe

Set new hub
in place south
of logging road.
Metal tag on 6'
cedar stump.

Found.
Set 1 3/4" x 4 1/2"
54 1/2" N 75° E
158' from 51'
cedar stump
345° E 192' from
2 1/2" Hem 5 1/2" and
530° W 178' from
120' Hem 5 1/2" with
face and scribe
marks plainly
visible. Bearing
and dist. to this
BT transferred
in original
Notes with
S.E. BT.
Scriber 2 1/2"
54 B 550 E
805



Subdivision of Section 32, 2N, R10W,
Section 5, T1N, R10W,
D-139
F. 40-139

Found
Bolt
Spike
Near
2101

45
7B

13278
N 0° 17' E

18102
N 89° 18' E

Set 1/2" X 3/8" pipe
for well 6 1/2" W 11:310 B
Metal tag 5 1/2" W 11:310 B

45
7B

10218
2630 E

50° 04' W

Set 1/2" X 3/8" pipe
Metal tag on 5 p. st.
42 south.

45
7B

26135
N 89° 51' E

26054
5204 E

45
7B

26054
5204 E

45
7B

26054
5204 E

45
7B

26054
5204 E

45
7B

26054
5204 E

45
7B

26054
5204 E

45
7B

26054
5204 E

45
7B

26054
5204 E

45
7B

26054
5204 E

45
7B

26054
5204 E

45
7B

26054
5204 E

45
7B

26054
5204 E

45
7B

26054
5204 E

45
7B

26054
5204 E

45
7B

26054
5204 E

45
7B

26054
5204 E

45
7B

26054
5204 E

45
7B

26054
5204 E

45
7B

26054
5204 E

45
7B

26054
5204 E

45
7B

26054
5204 E

45
7B

26054
5204 E

45
7B

26054
5204 E

45
7B

26054
5204 E

45
7B

26054
5204 E

45
7B

26054
5204 E

45
7B

26054
5204 E

45
7B

26054
5204 E

45
7B

26054
5204 E

45
7B

26054
5204 E

45
7B

26054
5204 E

45
7B

26054
5204 E

45
7B

26054
5204 E

45
7B

26054
5204 E

45
7B

26054
5204 E

45
7B

26054
5204 E

45
7B

26054
5204 E

45
7B

26054
5204 E

45
7B

26054
5204 E

45
7B

26054
5204 E

45
7B

26054
5204 E

45
7B

26054
5204 E

45
7B

26054
5204 E

45
7B

26054
5204 E

45
7B

26054
5204 E

45
7B

26054
5204 E

45
7B

26054
5204 E

45
7B

26054
5204 E

45
7B

26054
5204 E

45
7B

26054
5204 E

45
7B

26054
5204 E

45
7B

26054
5204 E

45
7B

26054
5204 E

45
7B

26054
5204 E

45
7B

26054
5204 E

45
7B

26054
5204 E

45
7B

26054
5204 E

45
7B

26054
5204 E

45
7B

26054
5204 E

45
7B

26054
5204 E

45
7B

26054
5204 E

45
7B

26054
5204 E

45
7B

26054
5204 E

45
7B

26054
5204 E

45
7B

26054
5204 E

45
7B

26054
5204 E

45
7B

26054
5204 E

45
7B

26054
5204 E

45
7B

26054
5204 E

45
7B

26054
5204 E

45
7B

26054
5204 E

45
7B

26054
5204 E

45
7B

26054
5204 E

45
7B

26054
5204 E

45
7B

26054
5204 E

45
7B

26054
5204 E

45
7B

26054
5204 E

45
7B

26054
5204 E

45
7B

26054
5204 E

45
7B

26054
5204 E

45
7B

26054
5204 E

45
7B

26054
5204 E

45
7B

26054
5204 E

45
7B

26054
5204 E

45
7B

26054
5204 E

45
7B

26054
5204 E

45
7B

26054
5204 E

45
7B

26054
5204 E

45
7B

26054
5204 E

45
7B

26054
5204 E

45
7B

26054
5204 E

45
7B

26054
5204 E

45
7B

26054
5204 E

45
7B

26054
5204 E

45
7B

Found
Bolt
Spike
Near
2101

45
7B

13278
N 0° 17' E

18102
N 89° 18' E

Set 1/2" X 3/8" pipe
for well 6 1/2" W 11:310 B
Metal tag 5 1/2" W 11:310 B

45
7B

10218
2630 E

50° 04' W

Set 1/2" X 3/8" pipe
Metal tag on 5 p. st.
42 south.

45
7B

26135
N 89° 51' E

26054
5204 E

45
7B

26054
5204 E

45
7B

26054
5204 E

45
7B