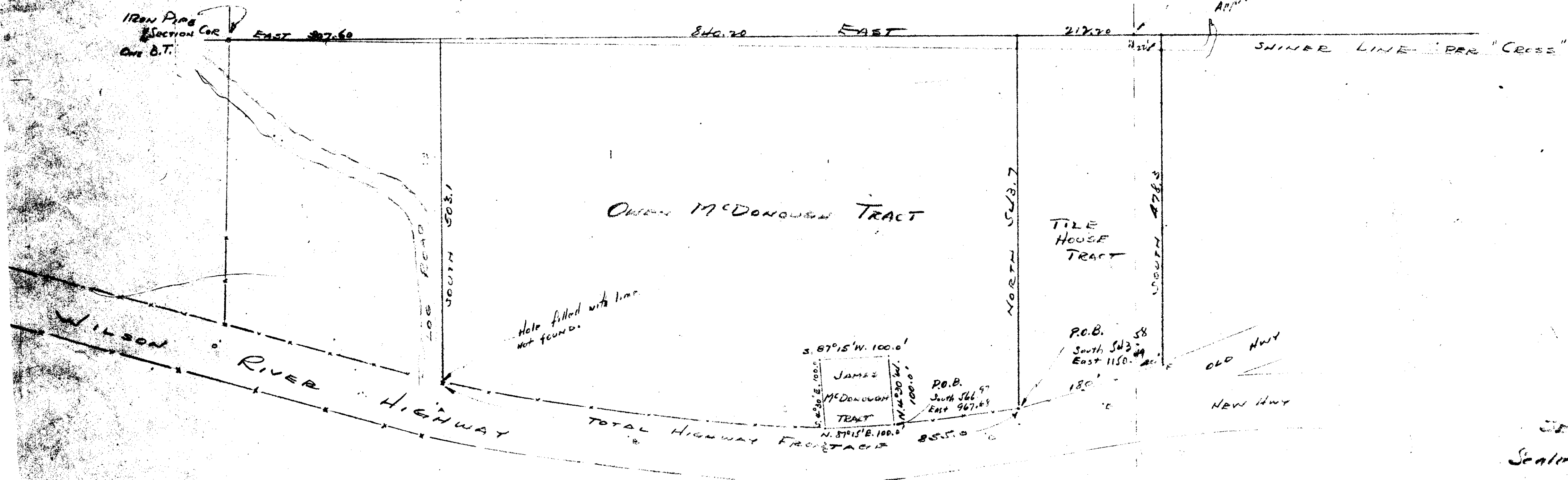


T. 1 S. R. 8 W. W. M.

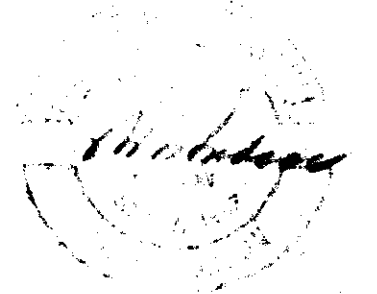
SECTION 10

SECTION 11

*1/2 Line Estimated Above  
Approximation of 1/2 Cor. by GARTH Coors for  
Henry Coors Log Co.*



Owen McDonough Tracts  
Wilson River Highway  
Section 11 T. 1 S. R. 8 W. W. M.  
Scale 1 inch = 100 feet Feb. 1953



D-128

F-40-128