

12 7
13 18
T.I.S. R. 9 W.W.M.
T.I.S. R. 10 W.W.M.

Actual Line to Section Cor. is S. 1°45' W.
THIS LINE S. 1°11' W.

Actual Pipe 1" S. 1°11' W. 564.3
from NE Cor. Sect 13
ORIGINAL PIPE WAS 2" (NOTE!)

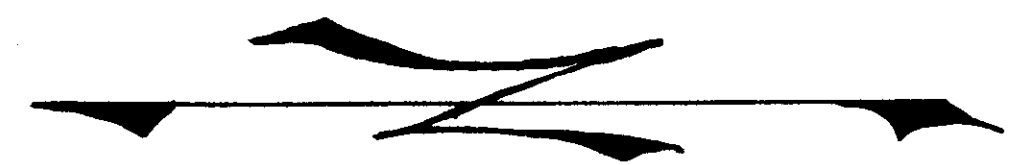
NE Cor. JUNO HEIGHTS INITIAL POINT
Intended to be S. 1°22' W. 563.5 ft. (S. 563.34 W. 13.43)
Actual S. 564.12 W. 11.66 from 12/7 13/18

Recapitulation of Coordinates Tied to 12/7 13/18

STATION NAME	RECORDED COOR'S.		THE ACTUAL COOR'S.	
	S.	W.	S.	W.
JUNO HEIGHTS Initial Pt. NE Cor.	563.34	13.43	564.12	11.66
JUNO HEIGHTS N.W. Cor.	552.11	489.29	550.68	487.24

Clark Service STATION

	BY DEED			
	S.	W.	S.	W.
NE. (P.O.B.)	596.55	493.63	599.84	488.97
SE.	679.60	495.61	682.94	490.81
NW.	635.91	600.03	(NEW) 638.43	592.34
SW.	677.59	579.89	681.10	575.12



CLARK TRACTS
NE 1/4 NE 1/4 SECTION 13
T.I.S. R. 10 W.W.M.
Scale 1 inch = 50 feet Feb. 1952.



Actual Intended to be N. 88°28' W. 476.0

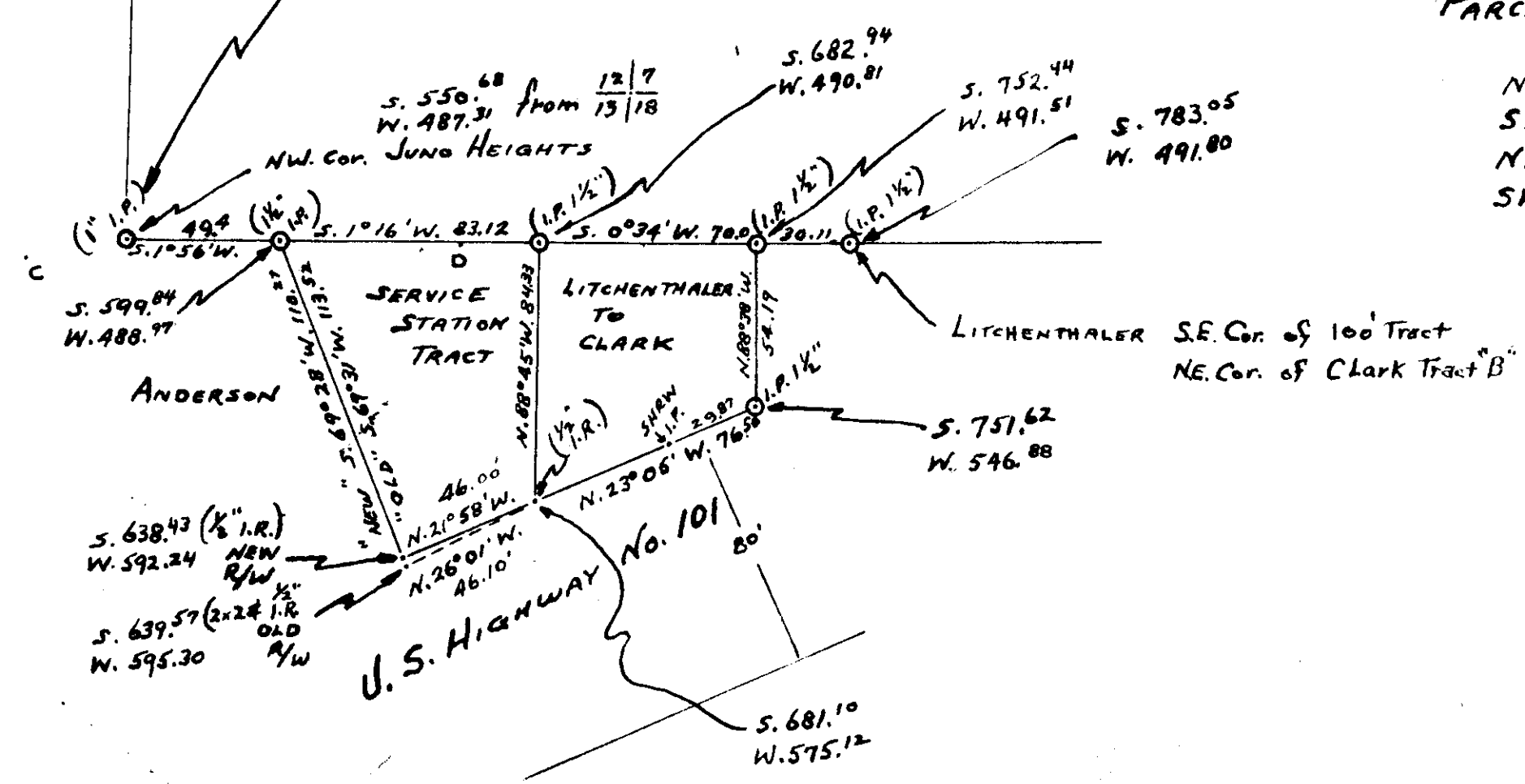
NOTE! JUNO HEIGHTS property lines still existing from original survey agree with this pipe by S. 0.01 variance W. 0.85

LITCHENTHALER TO CLARK (70')

NE (P.O.B.)	682.94	490.81
SE	752.94	491.51
NW	681.10	575.12
SW	751.62	546.88

PARCEL "B" CLARK

NE (P.O.B.)	782.45	494.89	783.05	491.80
SE	882.42	497.28	NONE	
NW	NO distance shown			
SW	NO distance shown			



D-124 Same as B-306