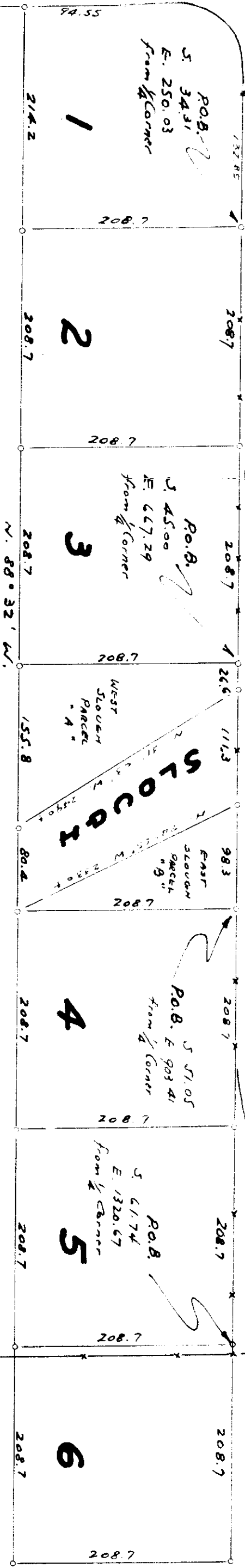


**BRICKYARD ROAD**

S. 0° 16' W.

N 0° 30' E.

1/4 Cor. for Sections 3 & 4  
T. 25. R. 9 W. M.



P.O.B. 34.31  
E. 250.03  
from 1/4 Corner

P.O.B. 45.00  
E. 667.29  
from 1/4 Corner

P.O.B. 51.05  
E. 903.41  
from 1/4 Corner

P.O.B. 61.74  
E. 1320.67  
from 1/4 Corner

**SLOCA**

WEST SLOUGH PARCEL #4

EAST SLOUGH PARCEL #8

**COURT ROAD**

1/4 Cor.  
NE Cor. of  
NW 1/4 SW 1/4 of Sect 3  
T. 25. R. 9 W. M.

**FERHARDT LOTS**

SECTION 3 T. 25. R. 9 W. M.

Scale 1 inch = 100 feet April 1951.

*Whittem*

F40-114  
~~D-114~~

D-114