

# SURVEYOR'S CERTIFICATE

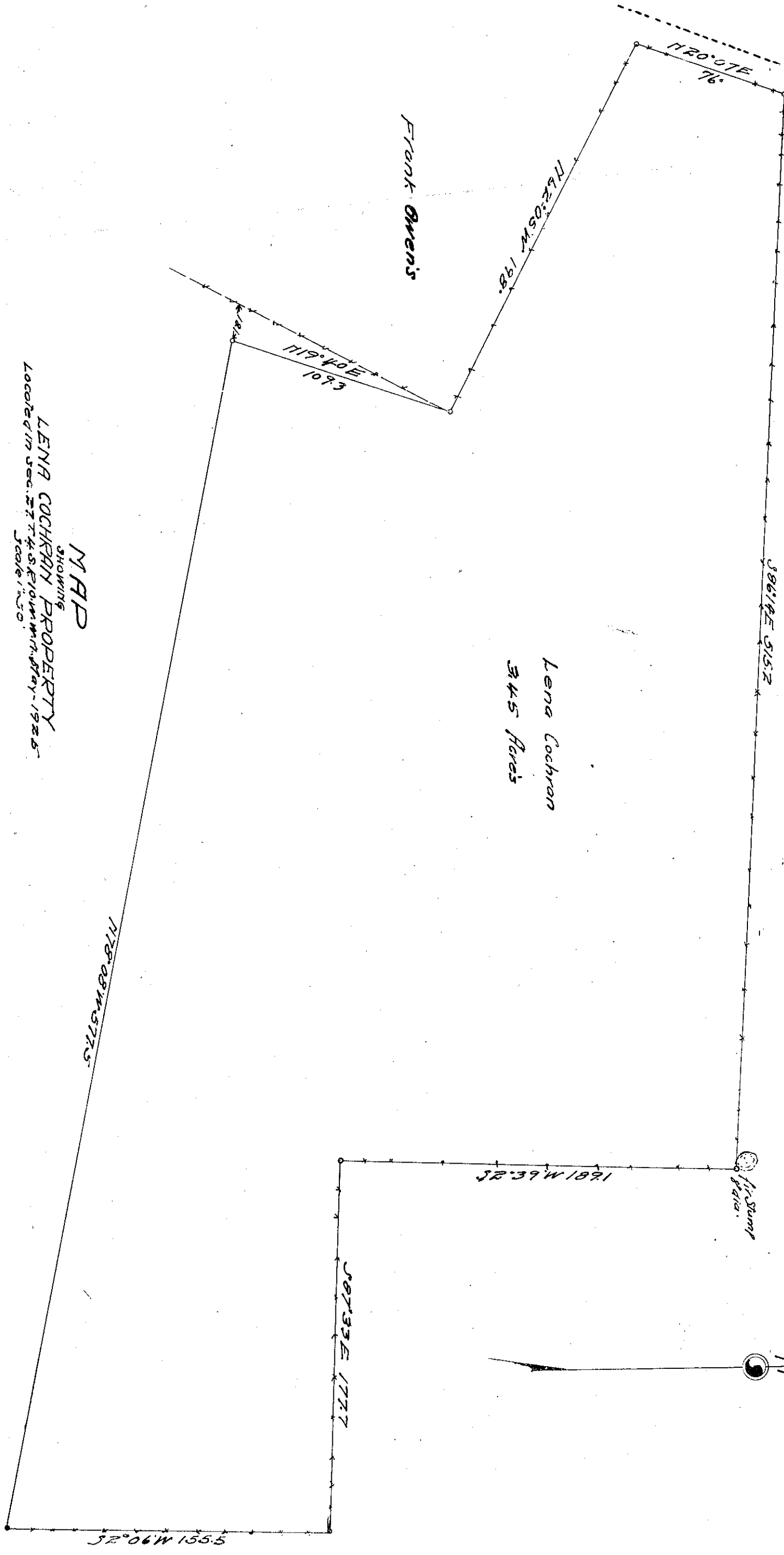
I, W.E. Anderson of Tillamook Ore, do hereby certify that this map was made from notes taken during an actual survey made by me in April, 1925, under the direct supervision of W.S. Coates, Esq., Engineer of Tillamook County, and that it correctly represents the lands herein shown.

Deputy Co. Eng'r  
W.E. Anderson

Note: This Tract contains four small tracts deeded to Lena Cochran and recorded in Book 40 of deeds page 16 and Book 42 of deeds pages 463-4, 1921.

Initial Point S52°28'E 7881 from the corner between Sections 22-27 T4S R10W

Coast Highway to Cloverdale



Lena Cochran  
345 Acres

Frank Owens

MAP  
SHOWING  
LENA COCHRAN PROPERTY  
Located in Sec. 27 T4S R10W Mt. Day, 1925  
Scale 1"=50'

F 40-101