

# WILSON RIVER HIGHWAY



119  
120  
75.25  
86.25  
411.58

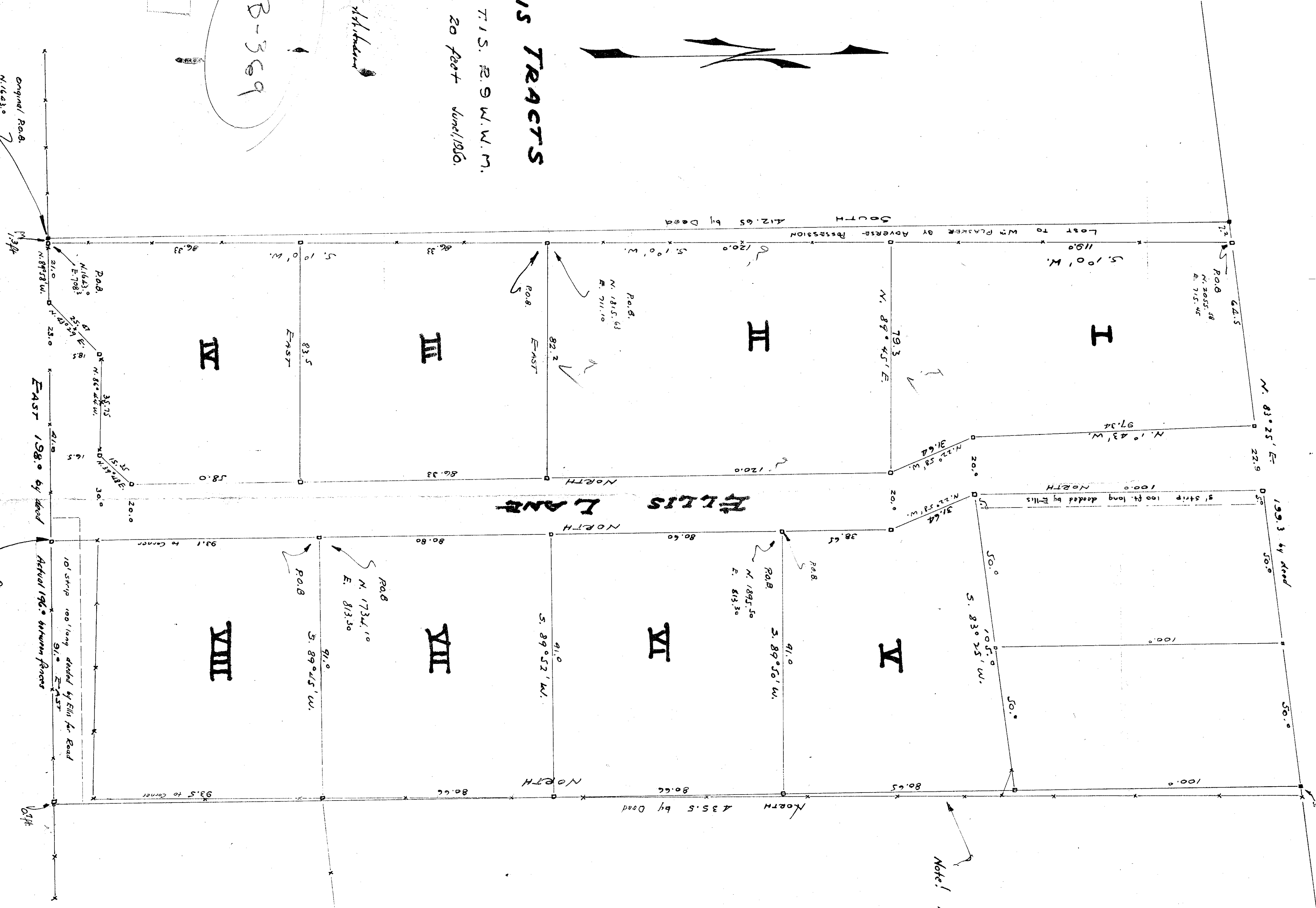
## ELLIS TRACTS

SECTION 30 T1S. R9W. W.M.  
Scale 1 inch = 20 feet June, 1920.

See B-369

Wilson

F40-100



Note!  
Almost Entire Area Not Claimed by Ellis

Original P.O.B.  
N. 1643.0  
E. 709.0  
from S.W. Corner of the  
Chas. H. Hayes Div. 12. 443.

1924

1924  
P.O.B.  
N. 1643.00  
E. 709.30  
813.33

10' strip 100' long divided by Ellis R. Road  
91.0 EAST  
93.5 to Corner

1924