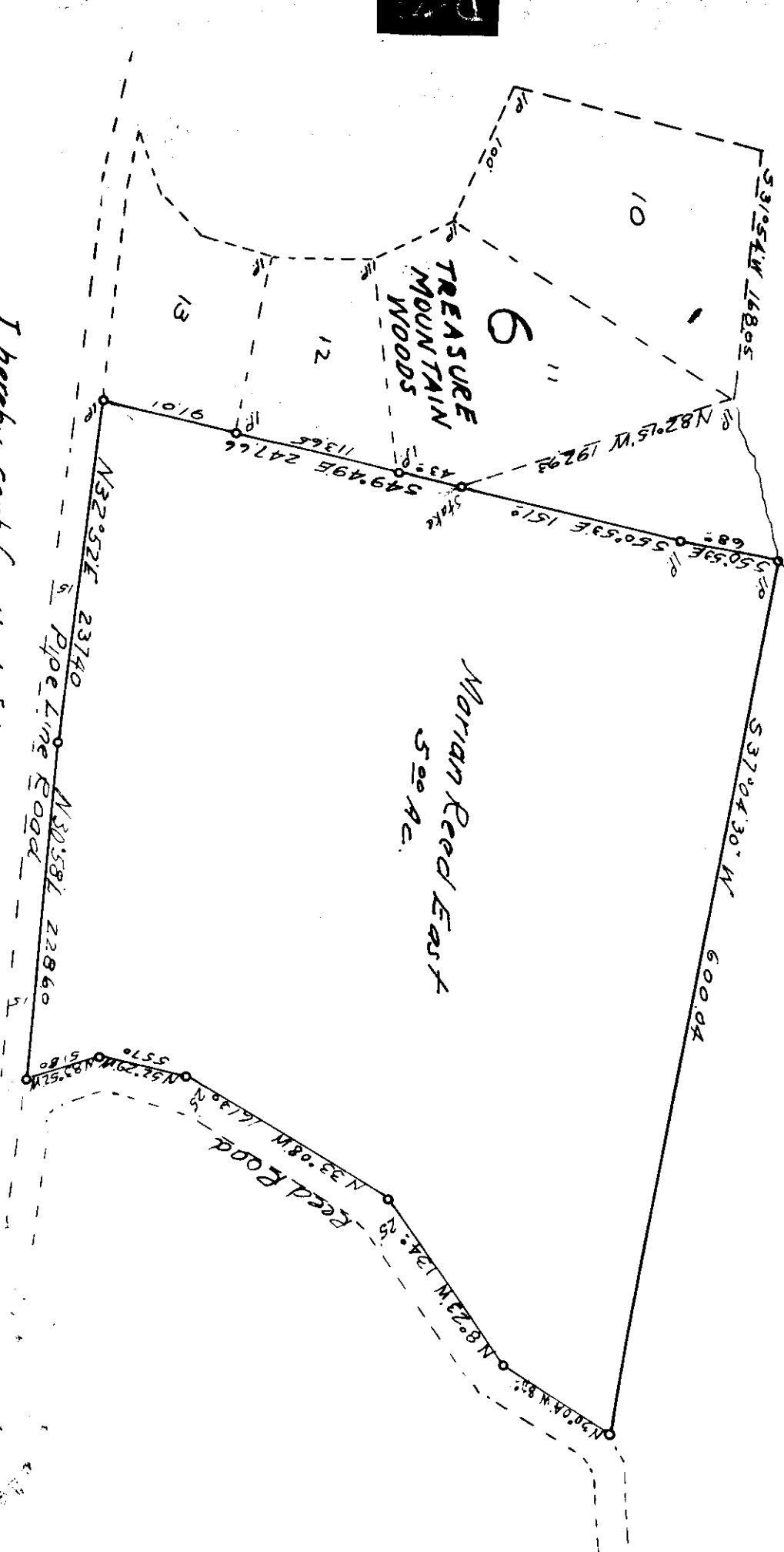


SURVEY FOR
 MARIAN REED EAST TRACT
 SECTION 20 T.3N. R.10 W. W.M.
 Scale 1"=100'
 Nov 15, 1948



I hereby certify that I have correctly
 surveyed the tract shown and
 set monuments as shown

Surveys made
 Nov 6th and 13th, 1948

J. H. Scott

F 40-76