

DESCRIPTION of TRACTS
IVAN E GIST

Starting from the NE Corner of Lot 3 in Sec. 21 T. 4 S. R. 10 W. and running thence N. 70° 00' E. 339.0 ft. to the Nestucca River, thence N. 87° 52' E. 214.5 ft. thence S. 1° 04' E. 1271.2 ft. to the Nestucca River, thence S. 76° 02' W. 427.7 ft. thence S. 84° 30' W. 493.2 ft. thence N. 72° 22' W. 209.6 ft. thence N. 13° 39' W. 389.4 ft. thence N. 46° 16' E. 423.4 ft. thence N. 0° 57' W. 288.6 ft. thence N. 75° 55' W. 189.6 ft. to Sec. Line, thence along said line N. 129° E. 54.8 ft. to the SE Corner of Lot 4 in said Sec. 21, thence N. 0° 38' E. 162.3 ft. to place of beginning containing 42.03 acres, more or less, thence N. 0° 38' E. 1286.95 ft. to place of beginning containing 46.88 acres more or less of the NW 1/4 of NE 1/4 of Sec. 21 T. 4 S. R. 10 W. W.M. Containing 19.12 acres more or less.

CECIL F. GIST.
Starting from a point N. 87° 01' E. 359.0 ft. from the NE Corner of Lot 3 in Sec. 21 T. 4 S. R. 10 W. and running thence N. 87° 01' E. 309.2 ft. and West through the center of said Sec. 21 and running thence N. 87° 01' E. 328.1 ft. thence S. 0° 38' W. 1270.85 ft. to Sec. Line, thence N. 87° 01' E. 483.15 ft. thence S. 0° 12' W. 222.5 ft. to the Nestucca River, thence N. 99° 57' W. 856.6 ft. thence S. 76° 02' W. 511.1 ft. thence N. 1° 04' W. 229.1 ft. to Sec. Line, thence S. 87° 02' W. 219.5 ft. thence N. 0° 38' E. 1286.95 ft. to place of beginning containing 19.12 acres more or less.

GEORGI A. GLICK.
Starting from the 3 sec. cor. in the center of Sec. 21 in T. 4 S. R. 10 W. and running thence N. 87° 01' E. 309.2 ft. thence S. 0° 03' W. 1306.55 ft. to Sec. Line, thence S. 0° 30' W. 2903.8 ft. to the Nestucca River, thence N. 68° 46' W. 481.1 ft. thence N. 0° 10' E. 223.5 ft. to Sec. Line, thence S. 87° 35' W. 288.15 ft. thence N. 0° 38' E. 1286.95 ft. to Sec. Line, thence N. 87° 01' E. 636.2 ft. to place of beginning containing 38.29 acres more or less.

FORREST M. GIST.
Starting from the 3 sec. cor. in the center of Sec. 21 in T. 4 S. R. 10 W. and running thence N. 0° 37' E. 1311.25 ft. to Sec. Cor. thence N. 89° 54' E. 760.9 ft. thence S. 0° 10' W. 1299.45 ft. to Sec. Line, thence S. 0° 30' W. 1304.85 ft. to Sec. Line, thence S. 1° 04' W. 223.49 ft. to Nestucca River, thence S. 34° 51' W. 32.8 ft. thence S. 1° 50' W. 305.3 ft. thence S. 87° 18' W. 1308 ft. thence N. 82° 06' W. 187.6 ft. thence N. 68° 46' W. 85 ft. thence N. 0° 30' E. 2703.8 ft. to Sec. Line, thence N. 0° 38' E. 1300.55 ft. to Sec. Line, thence S. 89° 01' W. 507.2 ft. to place of beginning containing 46.97 acres more or less.

ARCHIE C. GIST.
Starting from the NE corner of the SW 1/4 of the NE 1/4 of Sec. 21 in T. 4 S. R. 10 W. and running thence S. 0° 10' W. 1291.35 ft. to Sec. Cor. thence S. 0° 35' W. 2620.2 ft. to Sec. Cor. on the South Line of said Sec. 21, thence S. 87° 51' E. 740.10 ft. to Nestucca River, thence S. 34° 21' W. 456.8 ft. thence S. 29° 38' W. 497.0 ft. thence S. 48° 32' W. 608.8 ft. thence S. 54° 51' W. 217.2 ft. thence N. 1° 04' E. 253.49 ft. to Sec. Line, thence N. 0° 03' E. 1304.85 ft. to Sec. Line, thence N. 0° 38' E. 1299.95 ft. to Sec. Line, thence N. 0° 38' E. 548.9 ft. to place of beginning containing 22.17 acres more or less.

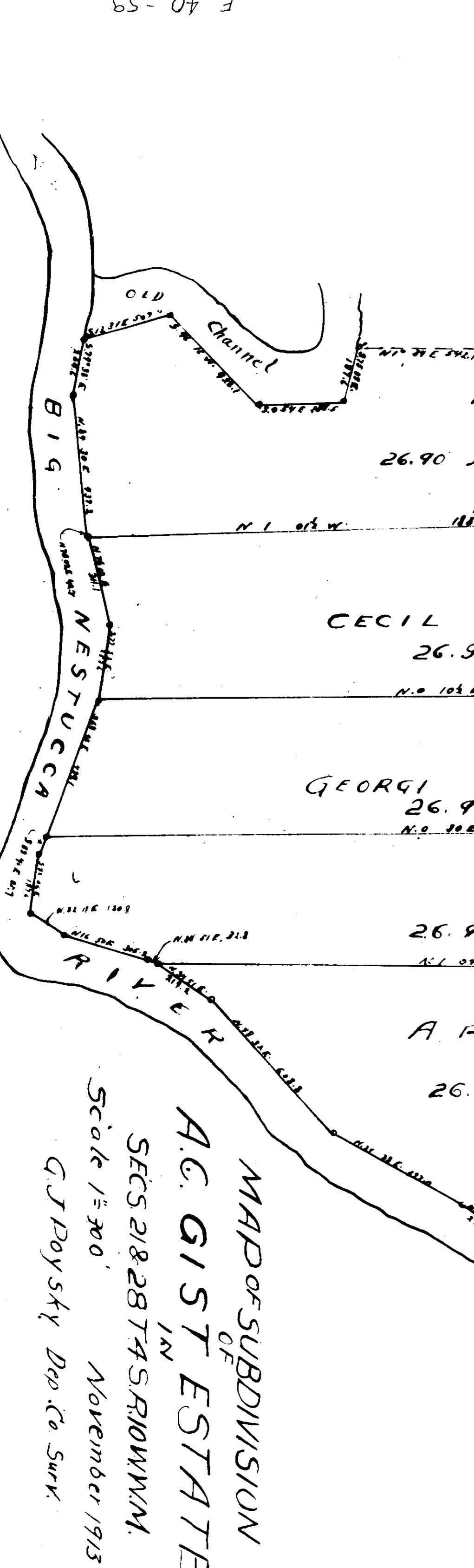
IVAN E. GIST
10 AC. Hill
N. 0° 31' E. 1286.25

CECIL F. GIST
10 AC. Hill
N. 0° 38' E. 1290.25

GEORGI A. GLICK
28.25 AC. Hill
N. 0° 03' E. 1300.55

FORREST M. GIST
13.91 AC. Hill
N. 0° 32' E. 1294.85

ARCHIE C. GIST
31.39 AC. Hill
N. 0° 38' E. 1291.85



MAP OF SUBDIVISION
OF
A.C. GIST ESTATE
IN
SECS 21 & 28 T. 4 S. R. 10 W. W.M.
Scale 1" = 300'
November 1913
G.J. Doyzsky Deed Co. Surv.