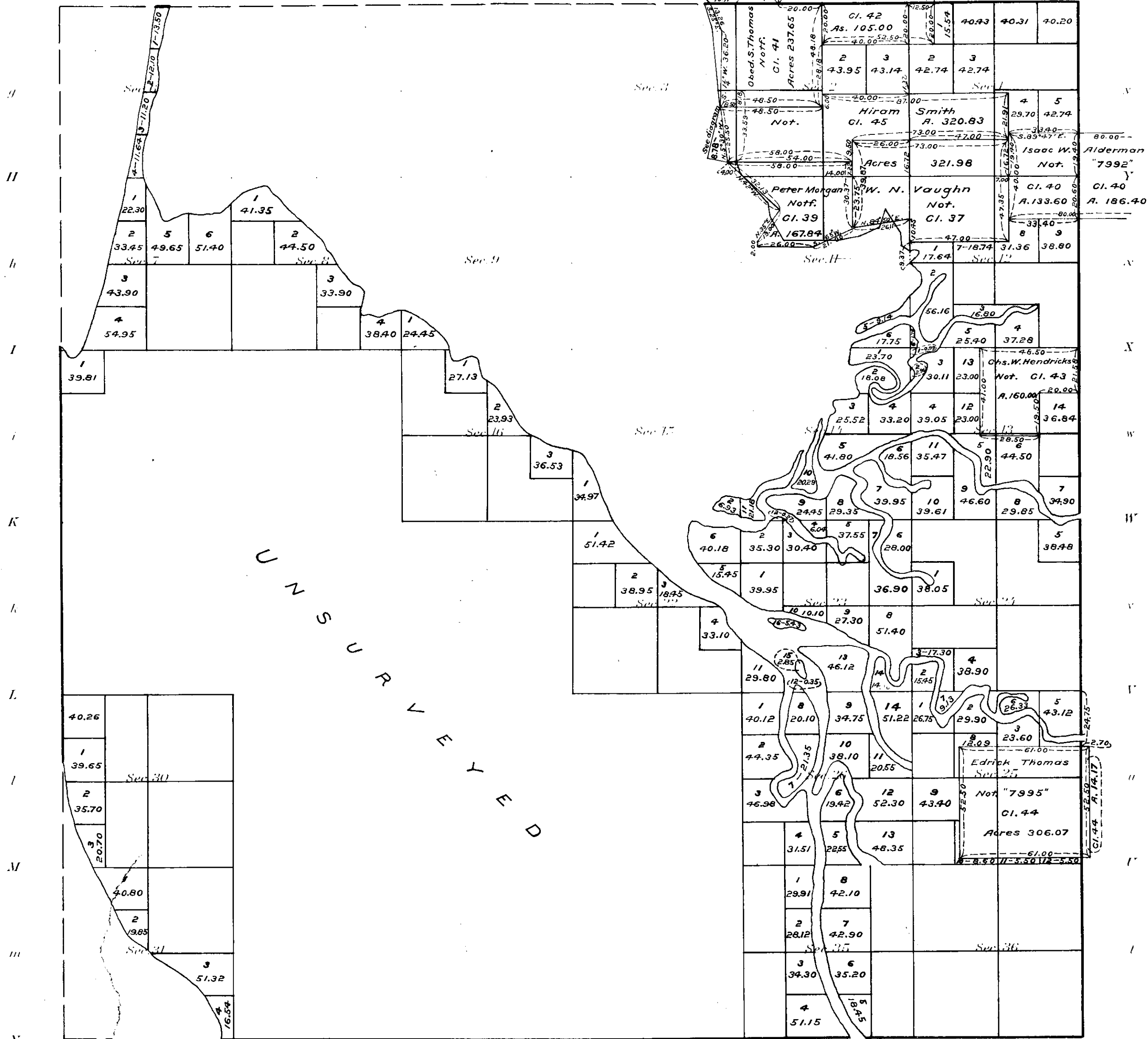


Township No 1 South Range No 10 West of the Willamette Meridian, Oregon.

G I F E D



Legal Sub. don. Cls.	
Surveyed "	1752.97
Public Id. remg.	
Total on Cl. Map	9386.85
" " Tp. "	9463.69
Diff. of comp.	76.84

Areas in Acres	
Public Land	
Indian Reservation	
Indian Allotments	
Mineral Claims	
Water Surface	
Total Area	

Scale 40 Chains to an inch
Mean Magnetic Declination

Surveys Designated	By Whom Surveyed	Contract		Amount of Surveys			When Surveyed	
		No.	Date	Mls.	chs.	cks.	Begun	Completed

The above Map of the survey of Cls. in T.1S.R.10W. Will. Mer. Ore. is strictly conformable to the field notes of the survey thereof on file in this Office, which have been examined and approved.
 Surveyor General's Office
 Eugene City, Nov. 30th, 1863.
 (Signed) B. J. Pengra
 Sur. Gen. of Ore.

I certify the above to be a true and correct copy of the original plat on file in this office.
 U.S. Surveyor General's Office
 Portland, Oregon, Sept. 17, 1921.
 Edward W. ...
 Surveyor General of Oregon.