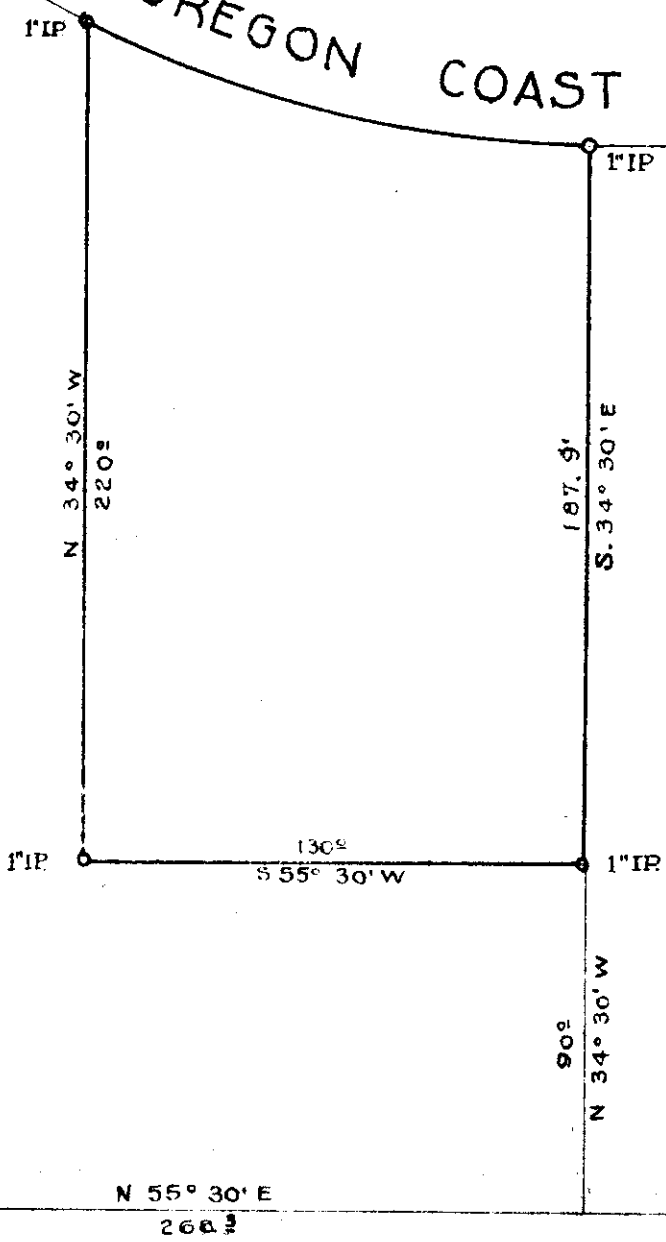


*C. R. Keenan
Bullman, Ore*

INITIAL POINT,
CITY OF WHEELER

OREGON COAST HWY

S 34° 30' E
396.09



● Monuments Found
○ Monuments Set

FIRST ST.



BOATWRIGHT ENGINEERING &
SURVEYING CO.
SALEM & CANNON BEACH - OREGON

SURVEY FOR
INDEPENDENT ORDER of ODD FELLOWS,
WHEELER LODGE No. 240
SEC. 3, TWP. 2N., R 10 W, W.M.

DECEMBER, 1945
SCALE 1" = 50'

FIELD J. SHEPPARD
DRAWN H. M. MUNGER.

F-40-18

NE 1/4 SE 1/4

F-40-18