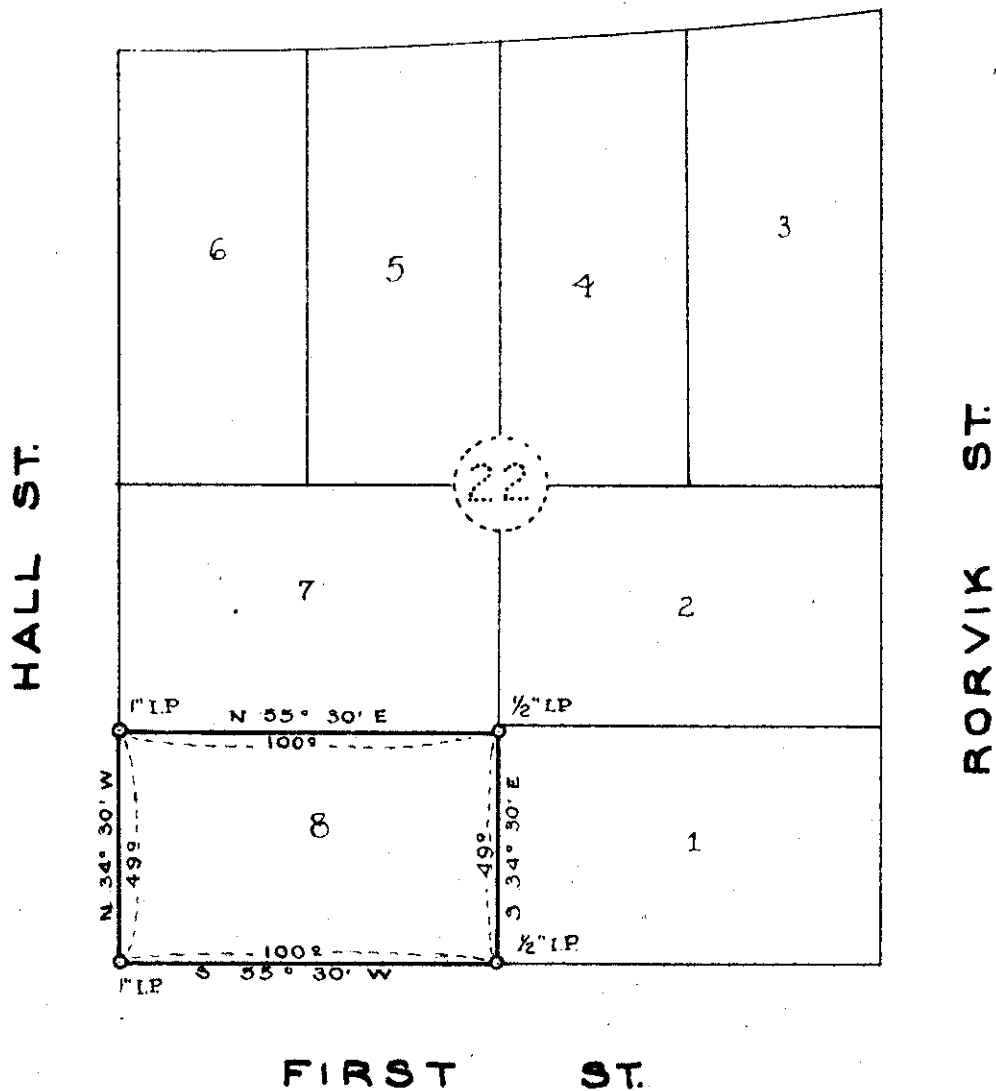


*Co. Records  
Instruments Co.*

OREGON COAST HWY.  
(NEHALEM BLVD.)



● Monuments Found  
○ Monuments Set.

*NW 1/4 SW 1/4*

BOATWRIGHT ENGINEERING &  
SURVEYING CO.  
SALEM & CANNON BEACH, OREGON.

SURVEY FOR  
LEO SOHLER  
LOT 8, BLOCK 22,  
CITY OF WHEELER, OREGON.  
Z - Z.M.D.



F-40-17

DECEMBER, 1945  
SCALE 1" = 50'

F-40-17

FIELD: J. SHEPPARD  
OFFICE: H. M. MUNGER.