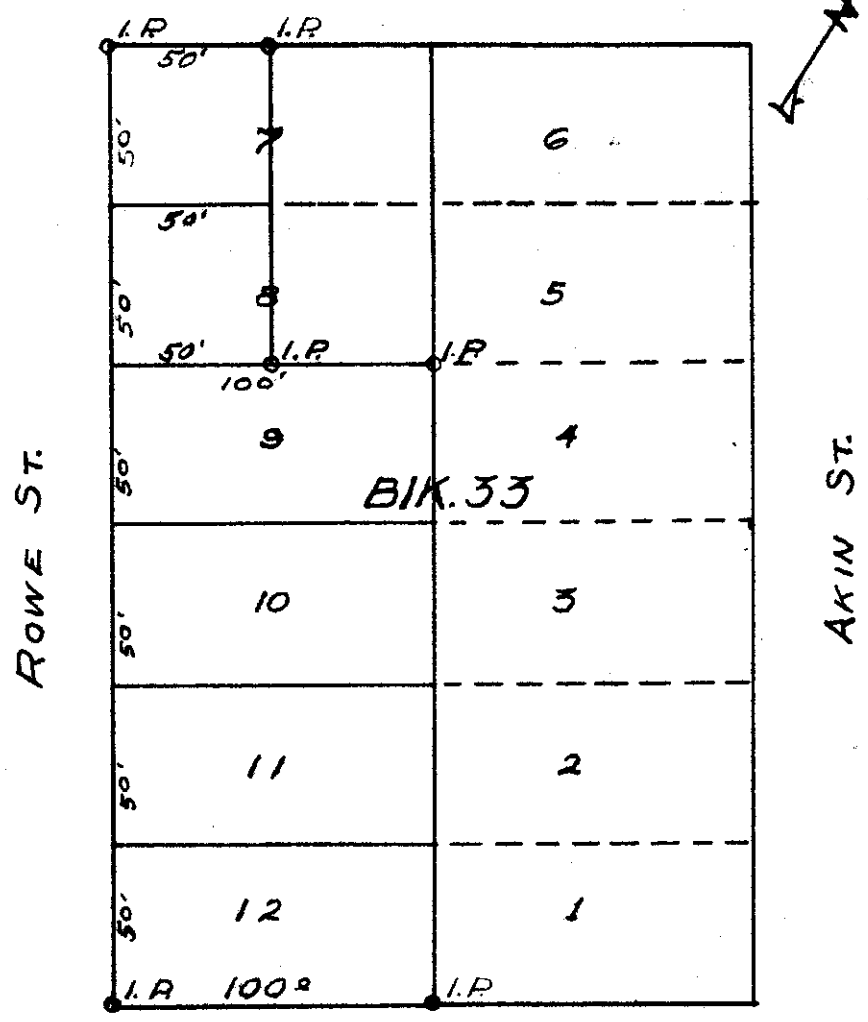


60' East
211 1/2' N 1/4

BLK. 34

SECOND ST.



THIRD ST.

○ MONUMENTS SET
● " FOUND

BOATWRIGHT ENGINEERING
& SURVEYING COMPANY
SALEM & CANNON BEACH, OREGON

SURVEY FOR
C.W. WHEELER

LOTS 9, 10, 11, & 12: WEST 1/2 OF 7 & 8, BLK. 33

2-2, N. 10.
WHEELER, ORE.

FIELD P.J. FERGGSON
DRAWN " 1/2

JANUARY 1946
SCALE 1" = 100'

F-40-15

F-40-15

5