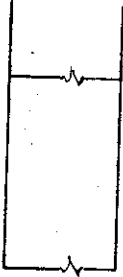
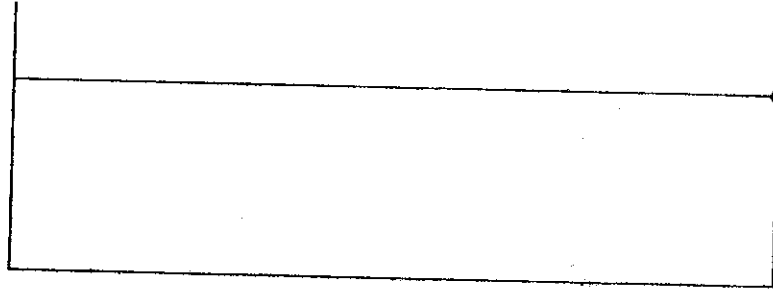


*Co. Records  
Salem, Ore.*

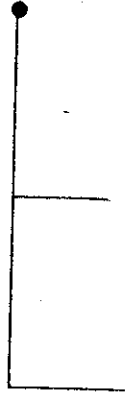
ST.



ST.



ST.

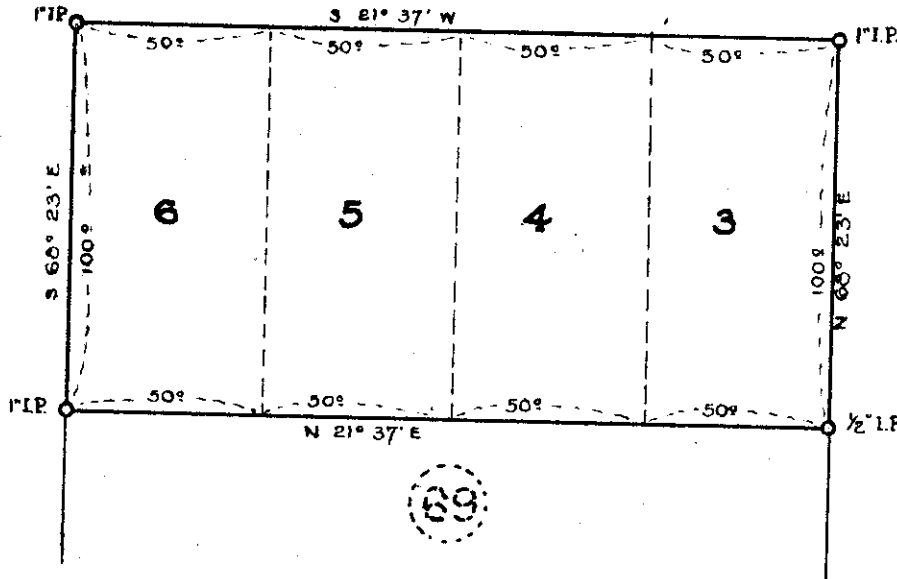


FIRST ST.

RECTOR



PINE



CEDAR



● Monuments Found.  
○ Monuments Set.



BOATWRIGHT ENGINEERING &  
SURVEYING CO.  
SALEM & CANNON BEACH - ORE.

SURVEY FOR  
ARTHUR M. & FRANCES A. SAYRE  
AND MABEL TEAL HOWELL  
LOTS 3, 4, 5 & 6 OF  
BLOCK 69, ROWE ADDITION  
CITY OF WHEELER, ORE.

Z-2, N. 10.



F-40-13

DECEMBER, 1945  
SCALE 1" = 50'

FIELD - J. SHEPPARD  
DRAWN - H.M. MUNGER

F-40-13