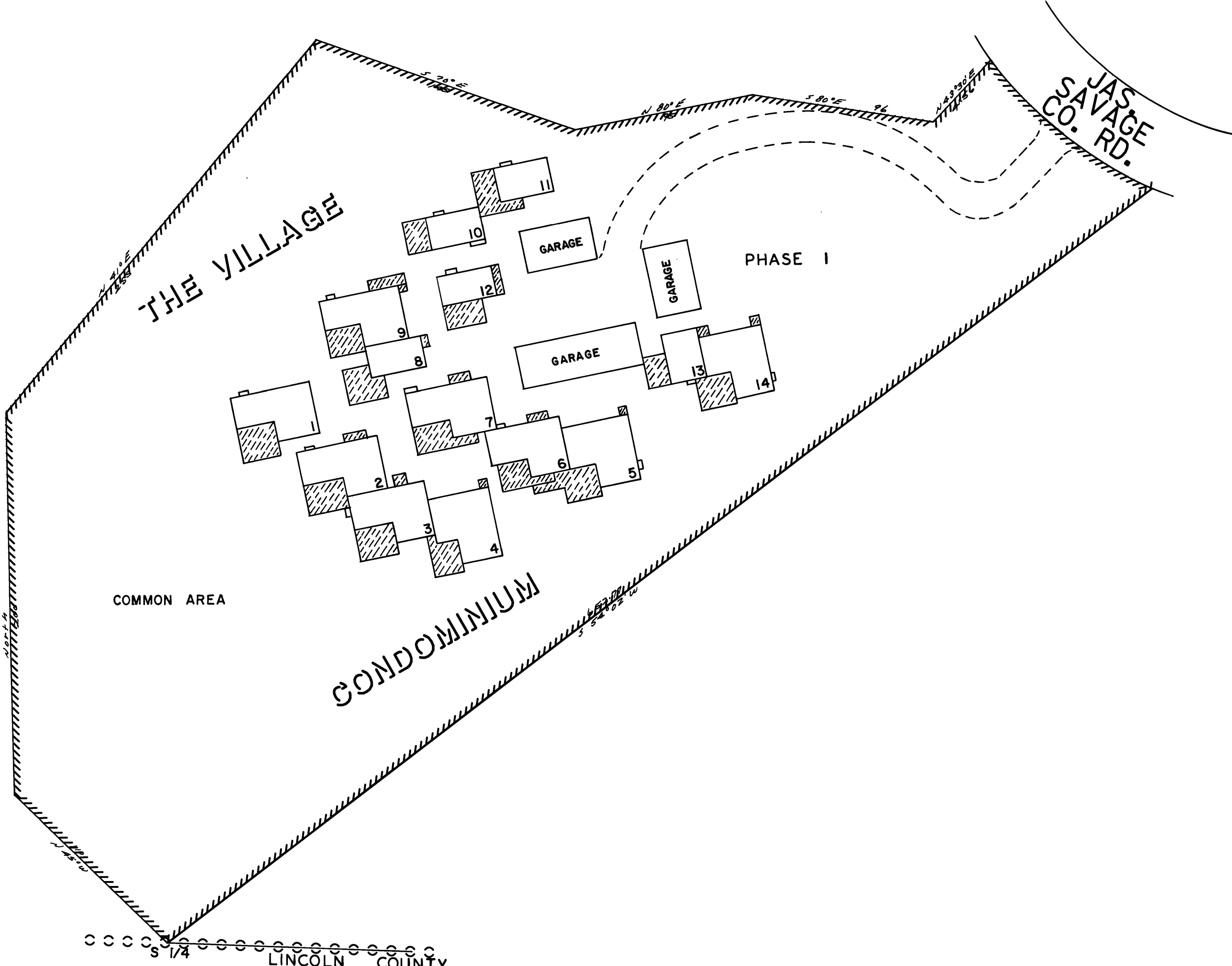


THIS MAP WAS PREPARED FOR
ASSESSMENT PURPOSE ONLY

SW1/4 SE1/4 SEC. 14 T.6S. R.11W. W.M.
TILLAMOOK COUNTY

1"= 50'

6S II 14DC
SUPPLEMENTAL
MAP NO.1



6S II 14DC
SUPPLEMENTAL
MAP NO.1

REVISÉD 5-15-98, 9C