

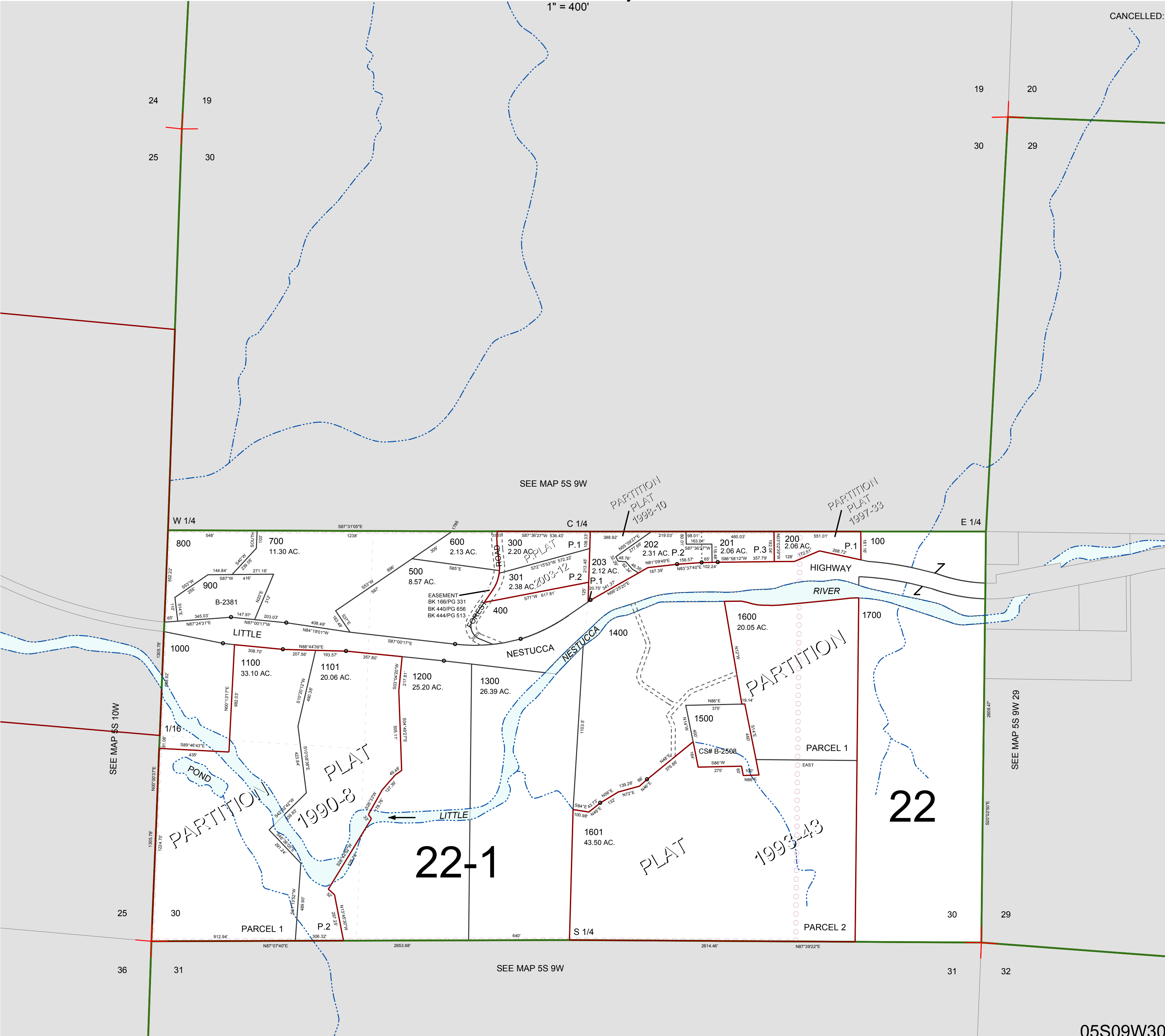
FOR ASSESSMENT AND TAXATION ONLY, NOT SUITABLE FOR  
LEGAL, ENGINEERING, OR SURVEY PURPOSES

SECTION 30 T.5S. R.9W. W.M.  
Tillamook County

$$1'' = 400'$$

05S09W30

CANCELLED:



05S09W30

REVISED 6/16/17, WS