

THIS MAP WAS PREPARED FOR
ASSESSMENT PURPOSE ONLY

0 50 100 150 200 Feet

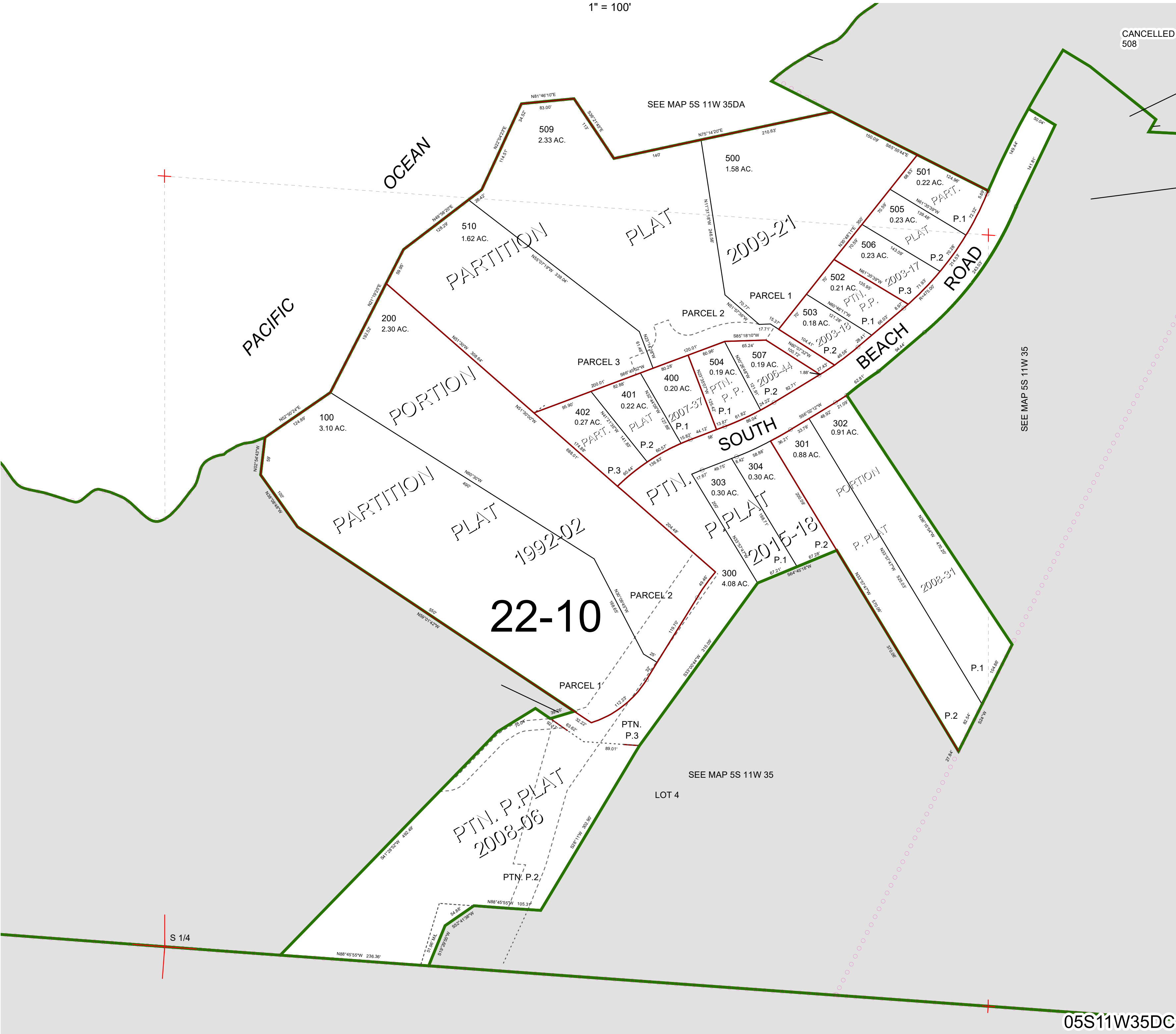
S.W.1/4 S.E.1/4 SEC.35 T.5S. R.11W. W.M.

TILLAMOOK COUNTY

1" = 100'

05S11W35DC

CANCELLED
508



05S11W35DC

Revised 08/07/20, WS