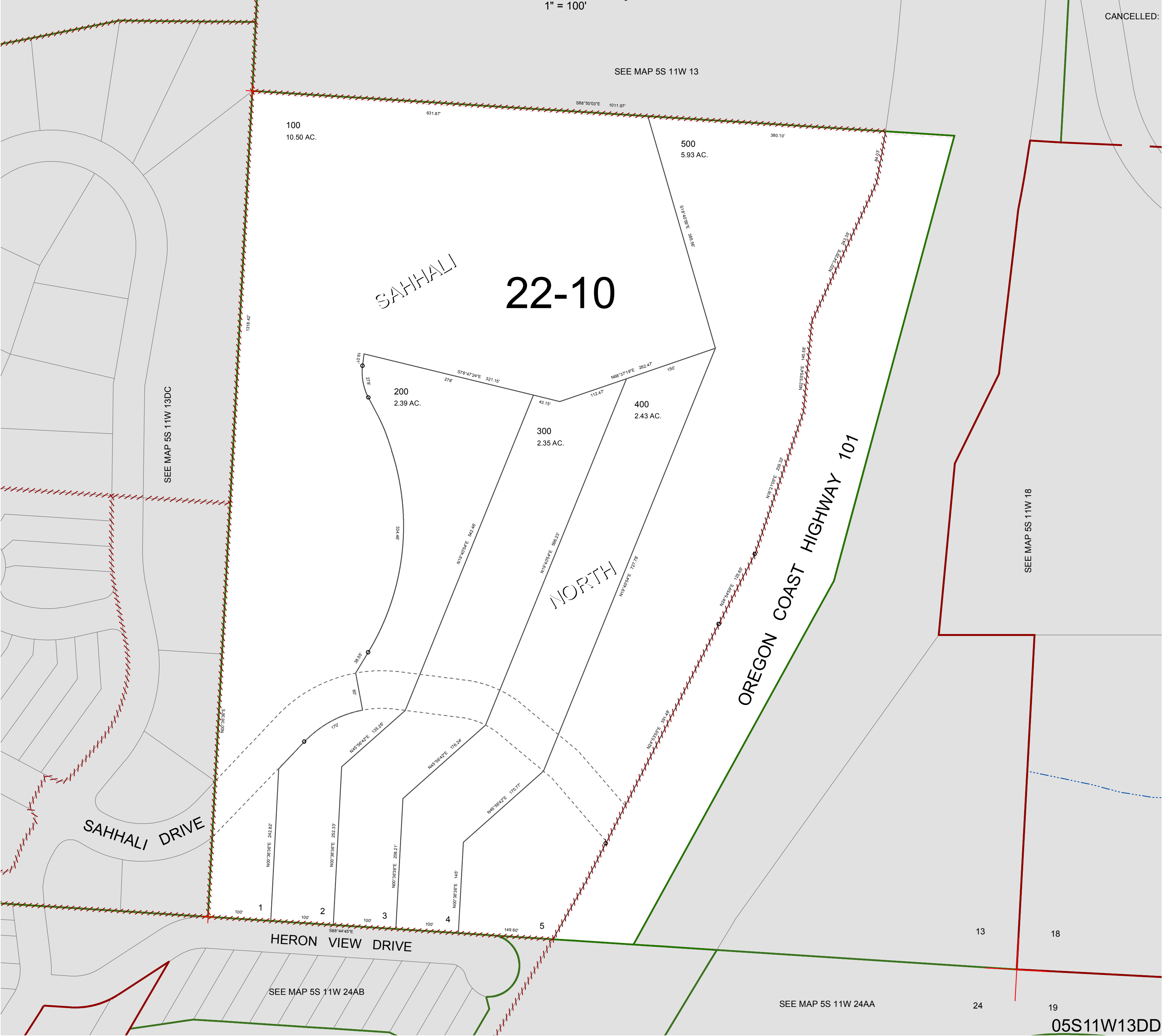


FOR ASSESSMENT AND TAXATION ONLY. NOT SUITABLE FOR
LEGAL, ENGINEERING, OR SURVEY PURPOSES

S.E. 1/4 S.E. 1/4 SEC. 13 T.5S. R.11W. W.M.
Tillamook County
1" = 100'

05S11W13DD

CANCELLED:



05S11W13DD

REVISED 7/9/13, WS