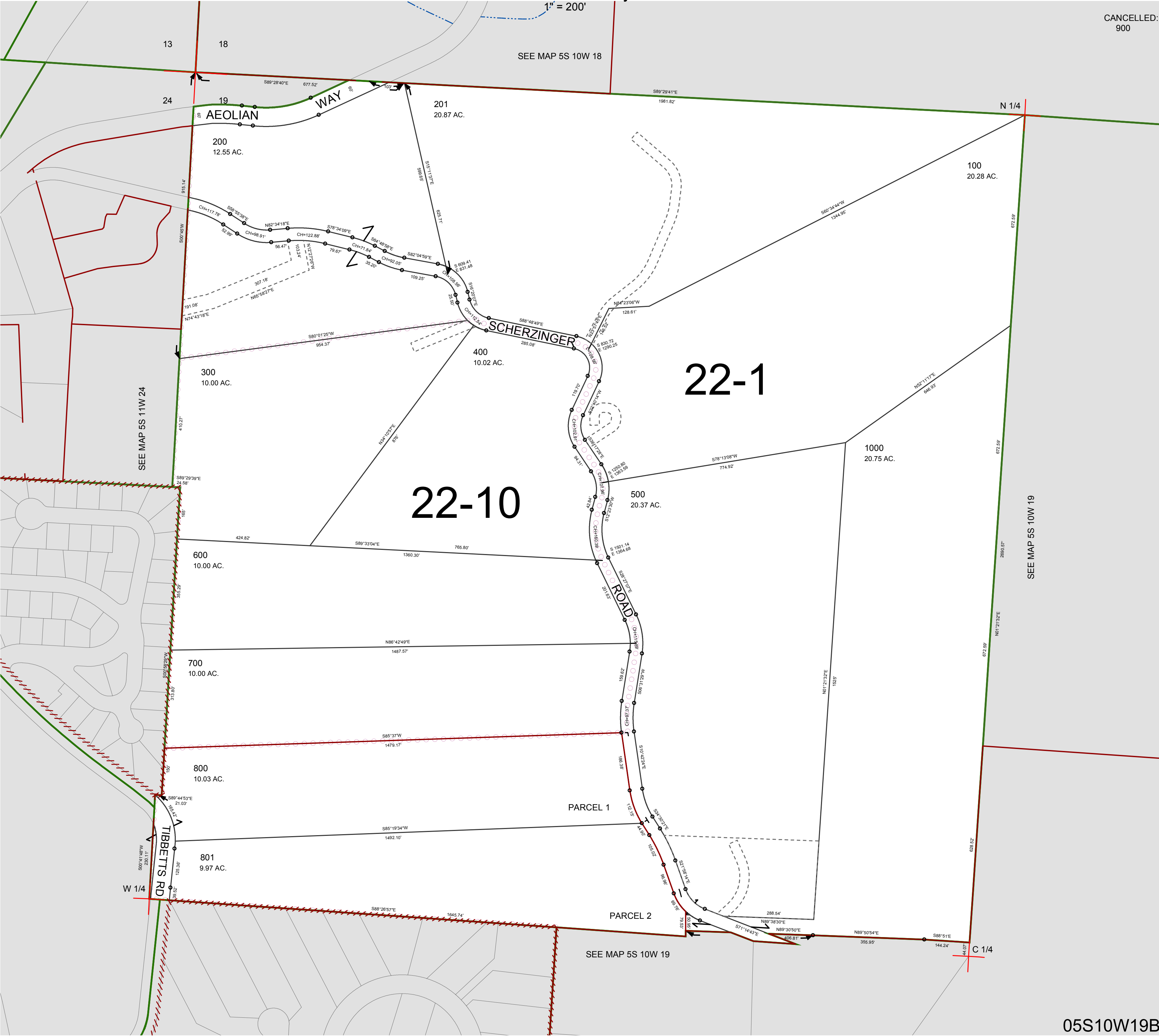


FOR ASSESSMENT AND TAXATION ONLY, NOT SUITABLE FOR  
LEGAL, ENGINEERING, OR SURVEY PURPOSES

N.W.1/4 SEC.19 T.5S. R.10W. W.M.  
Tillamook County

05S10W19B

CANCELLED:  
900



05S10W19B  
REVISED 6/16/17, WS