

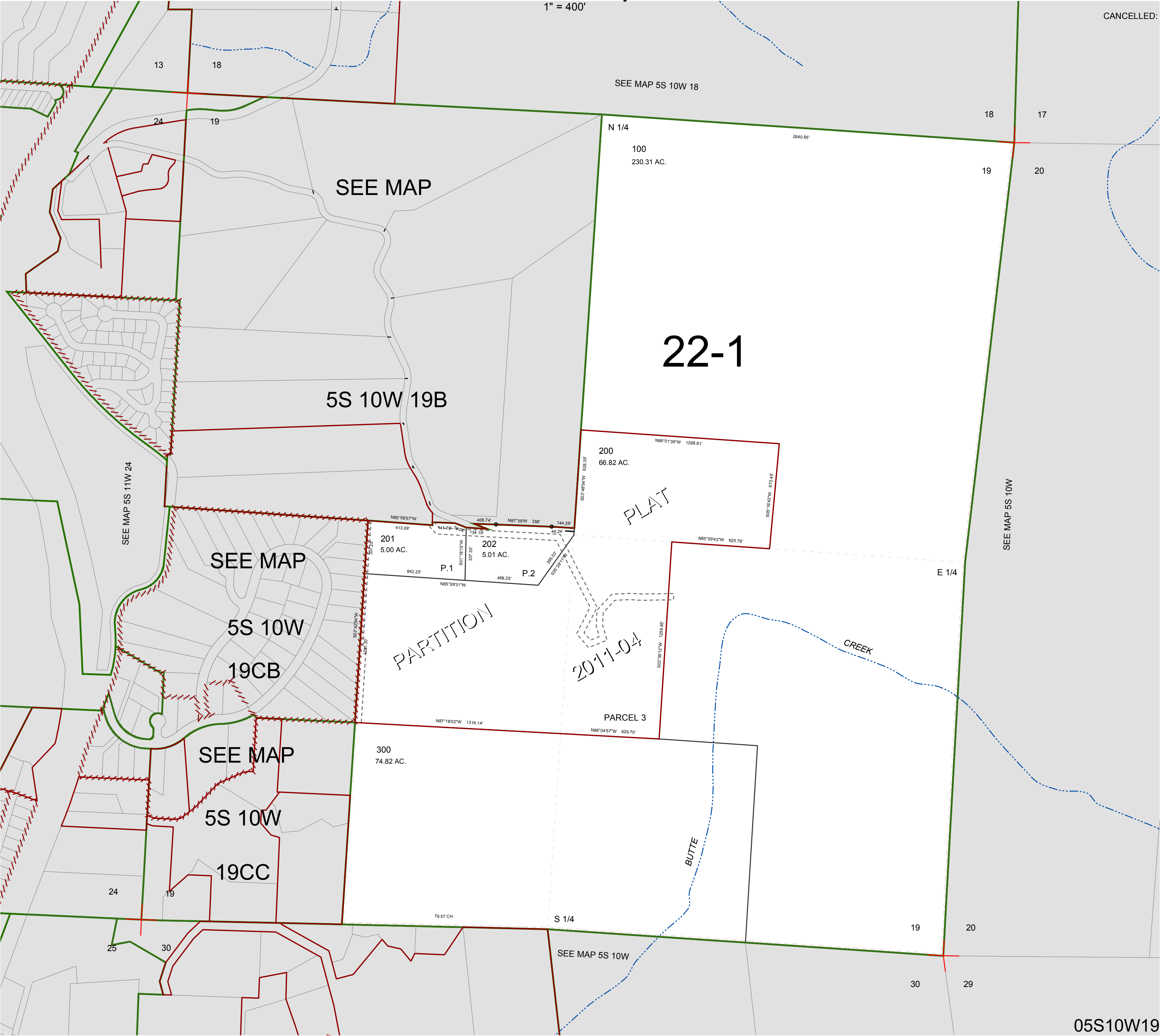
FOR ASSESSMENT AND TAXATION ONLY, NOT SUITABLE FOR  
LEGAL, ENGINEERING, OR SURVEY PURPOSES

SECTION 19 T.5S. R.10W. W.M.  
Tillamook County

1" = 400'

05S10W19

CANCELLED:



05S10W19

REVISED 6/16/17, WS