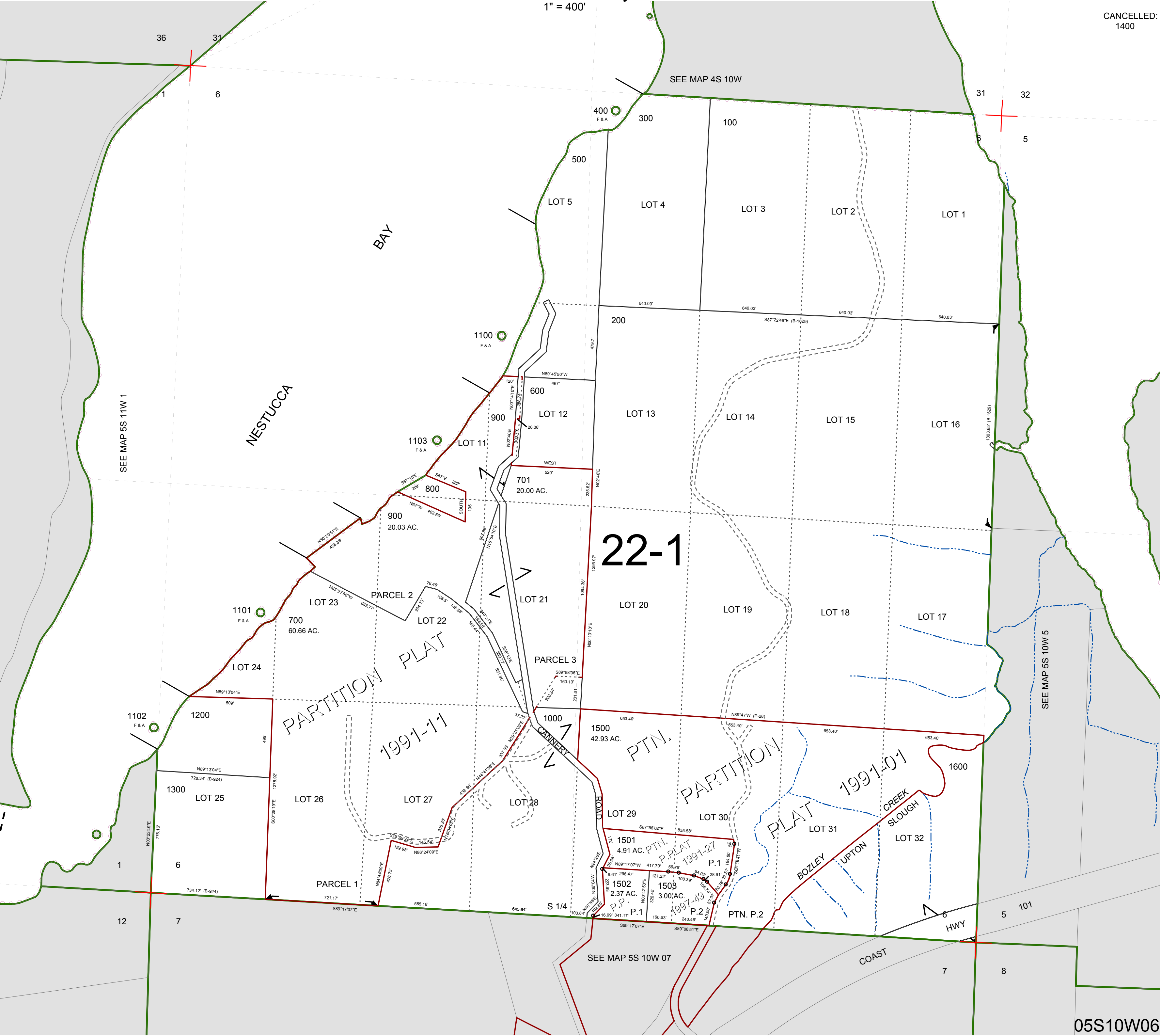


FOR ASSESSMENT AND TAXATION ONLY, NOT SUITABLE FOR  
LEGAL, ENGINEERING, OR SURVEY PURPOSES

SECTION 6 T.5S. R.10W. W.M.  
Tillamook County  
1" = 400'

05S10W06

CANCELLED:  
1400



05S10W06

REVISED 6/16/17, WS